

BIKE PLASTIC REMOVAL PART ONE

Disclaimer - Caution: This pictorial is for informational purposes only. Not responsible for accuracy, or any damage caused to your motorcycle if you choose to perform these activities.

Specifics:

- Bike shown is a 2008 R1200RT
- Heated Seat Option
- No Factory Radio
- Owner installed options of :
 - o Gerbing Permanent Heat Control
 - o Digital Volt Meter
 - o Modified Accy Socket (Front) wiring harness
 - o Centech Fuse Panel and wiring for GPS

Special Tools Needed:

- T- 25 Torx Socket
- T- 27 Torx Socket

Space – you will need a bit of space to stow away the panels as they are removed 10' x 6' is minimal

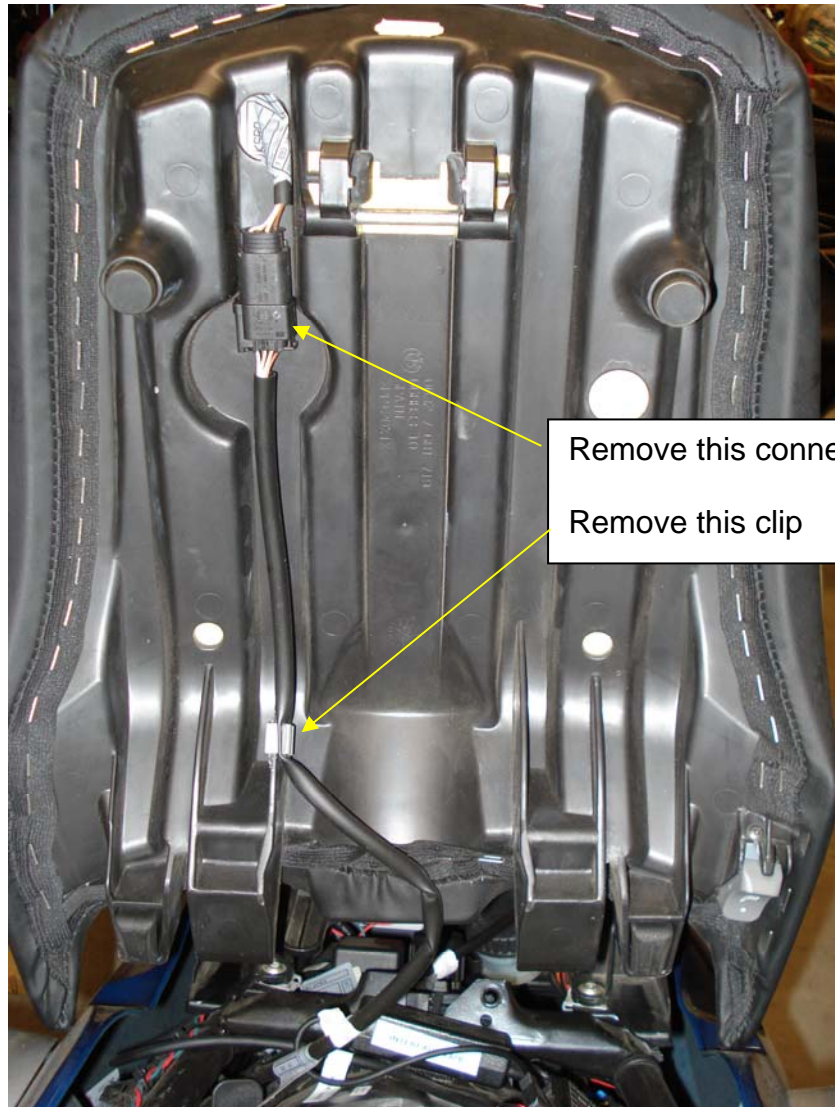
Process Steps:

- 1 Remove Seats
- 2 Remove Tank Bag Mounting Rack
- 3 Clutch Side Fairing – with special attention
 - o Accessory Socket
- 4 Throttle Side Fairing – with special attention
 - o Air Temperature Sensor Removal
 - o Glove Box Door Removal

SEAT REMOVAL

Remove the seats to gain access for side panel removal. If you have heated seats you need to remove the connectors.

Pillion Seat



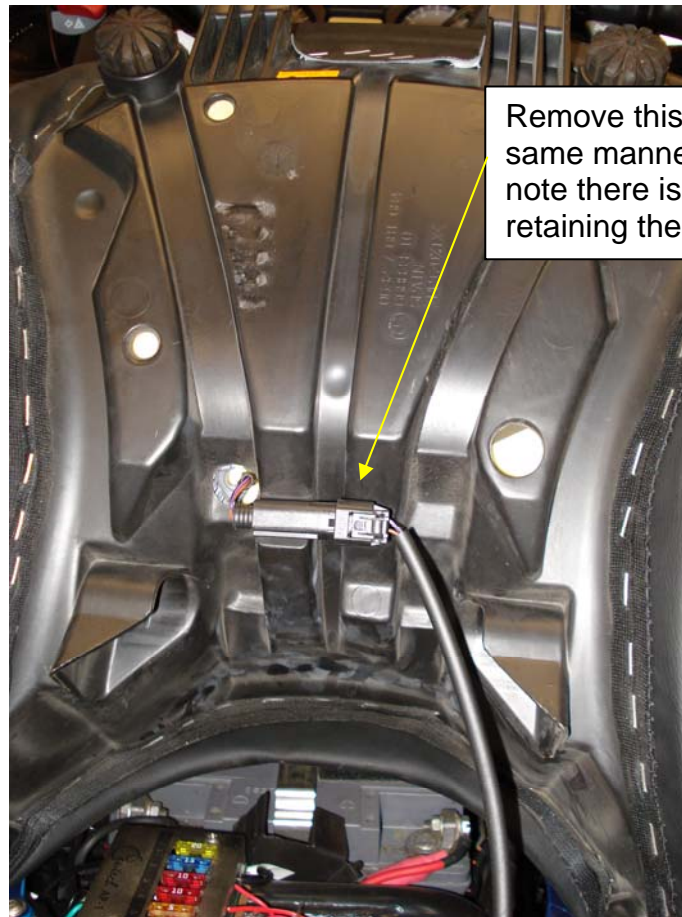
Press on the side of the connector tab to release – hold connector body with other hand and pull back



Gently pry off retaining clip, once clip is removed Pillion seat can be set aside



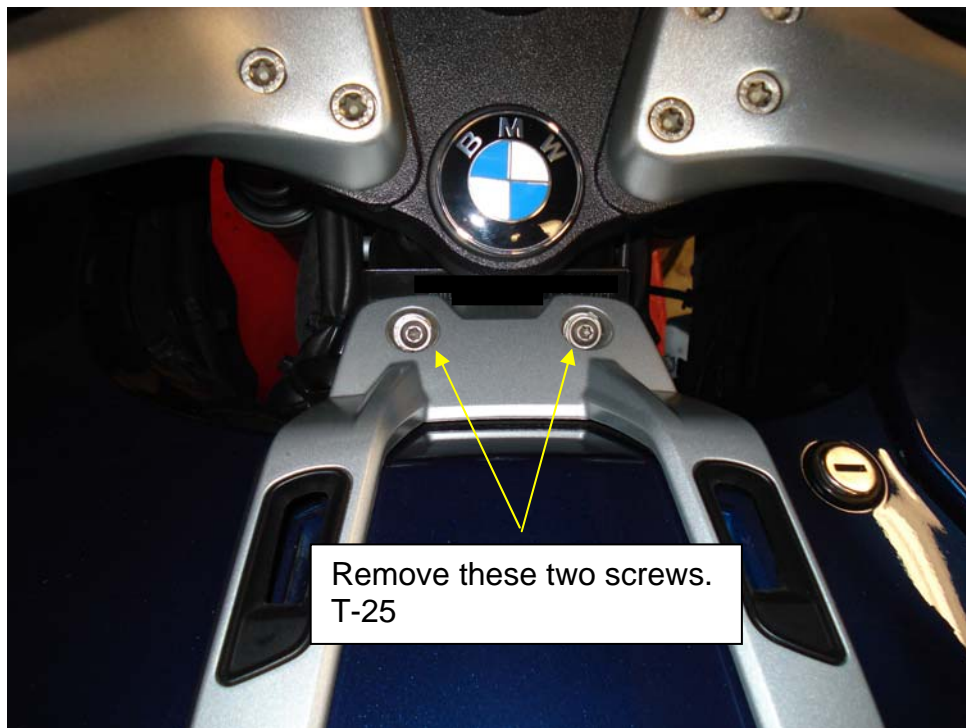
Driver Seat Heated Seat Connector Removal



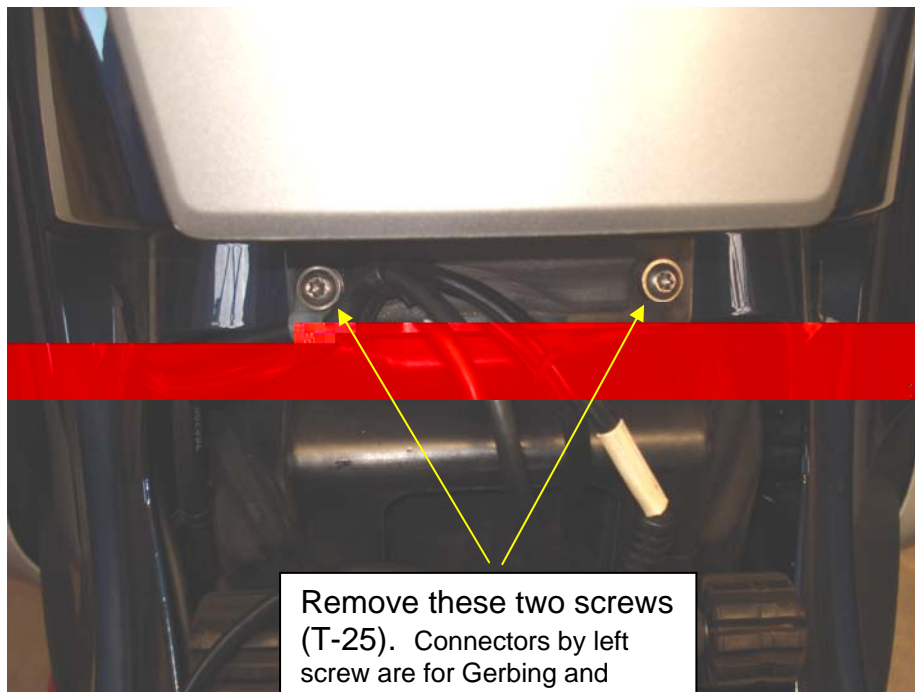
Remove this connector in the same manner as the Pillion – note there is no secondary clip retaining the wire harness.

Tank Bag Mounting Rack Removal





Remove these two screws.
T-25



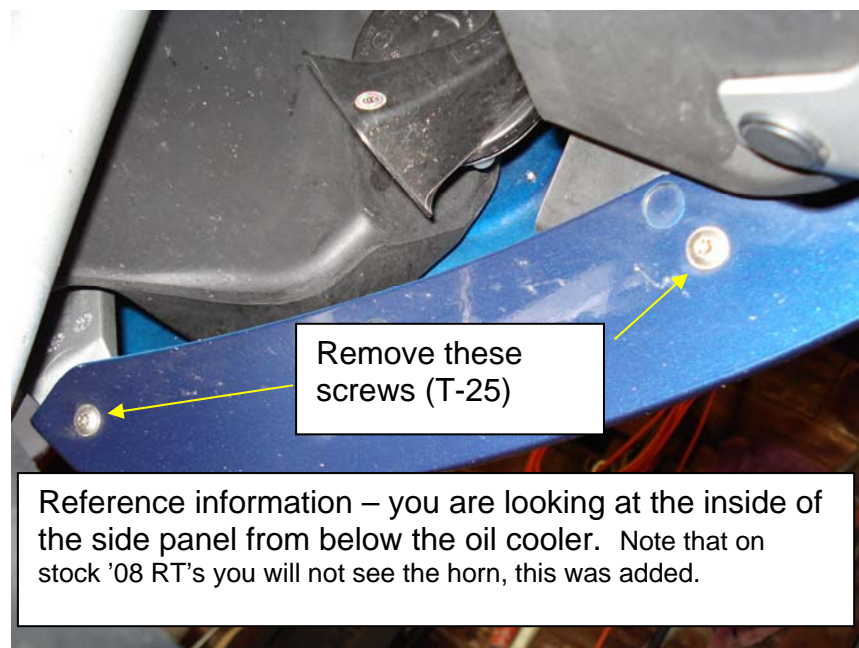
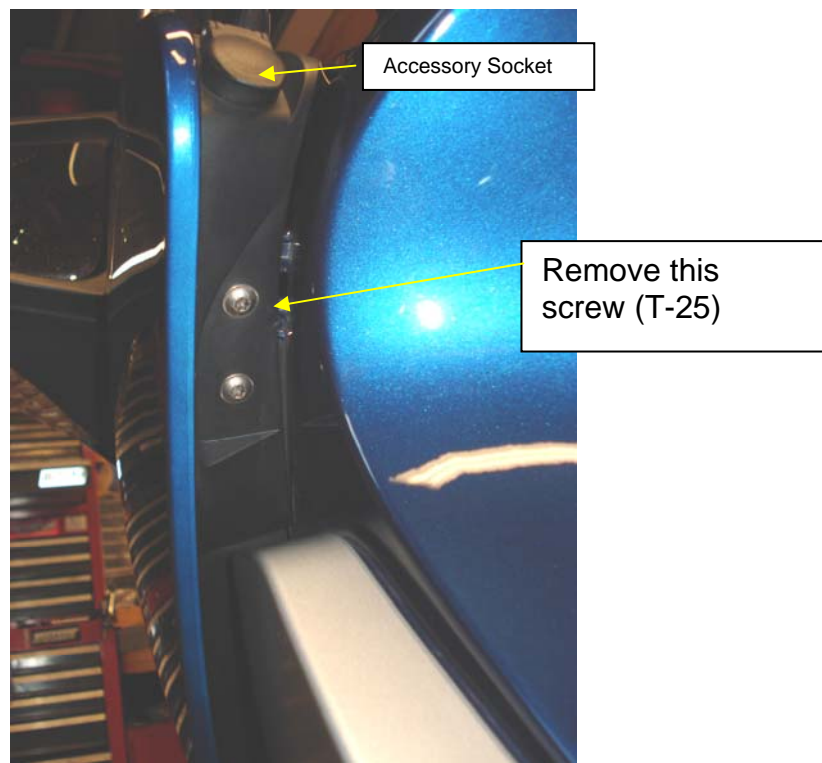
Remove these two screws
(T-25). Connectors by left
screw are for Gerbing and
Autocom – not part of stock RT.

Once the screws are removed, the tank bag rack mount can be removed off of the bike. SUGGESTION – keep the screws either with the removed component or placed in an identified bag – this will greatly facilitate re-assembly.

CLUTCH-SIDE SIDE PANEL REMOVAL

Please note that once the Tank Bag Mount rack is removed it does not matter which side panel is removed first.





Once the 4 screws are removed you can remove the side panel.

Removal process – stand facing the side panel, with one hand grasp the side with the accessory socket, with the other grab the front. Pull gently with your right hand towards you and at the same time push the panel to the front to clear the front of the bike. Check for the top black trim piece not to be hanging up on the dash panel. **IMPORTANT NOTE** – this side has the accessory socket and it will be connected – you need to make the disconnect of the OEM connector to physically remove the panel off the bike.

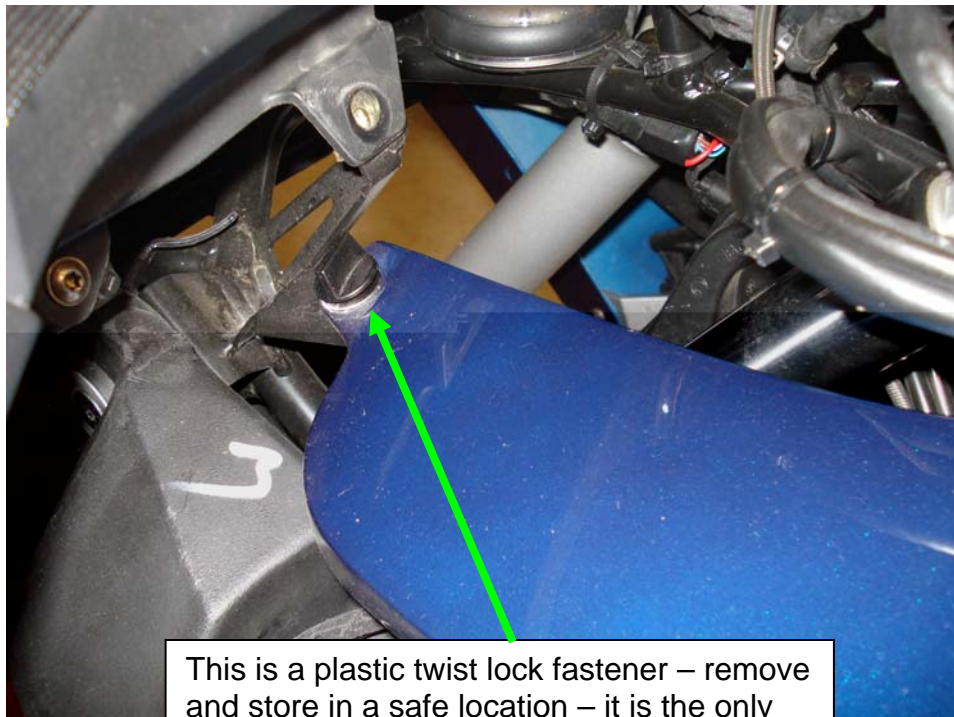
Suggestion – due to the amount of hassle to remove the accessory socket wire connection, I cut the wiring and installed a separate connector so I can connect/disconnect the ACC Socket harness.



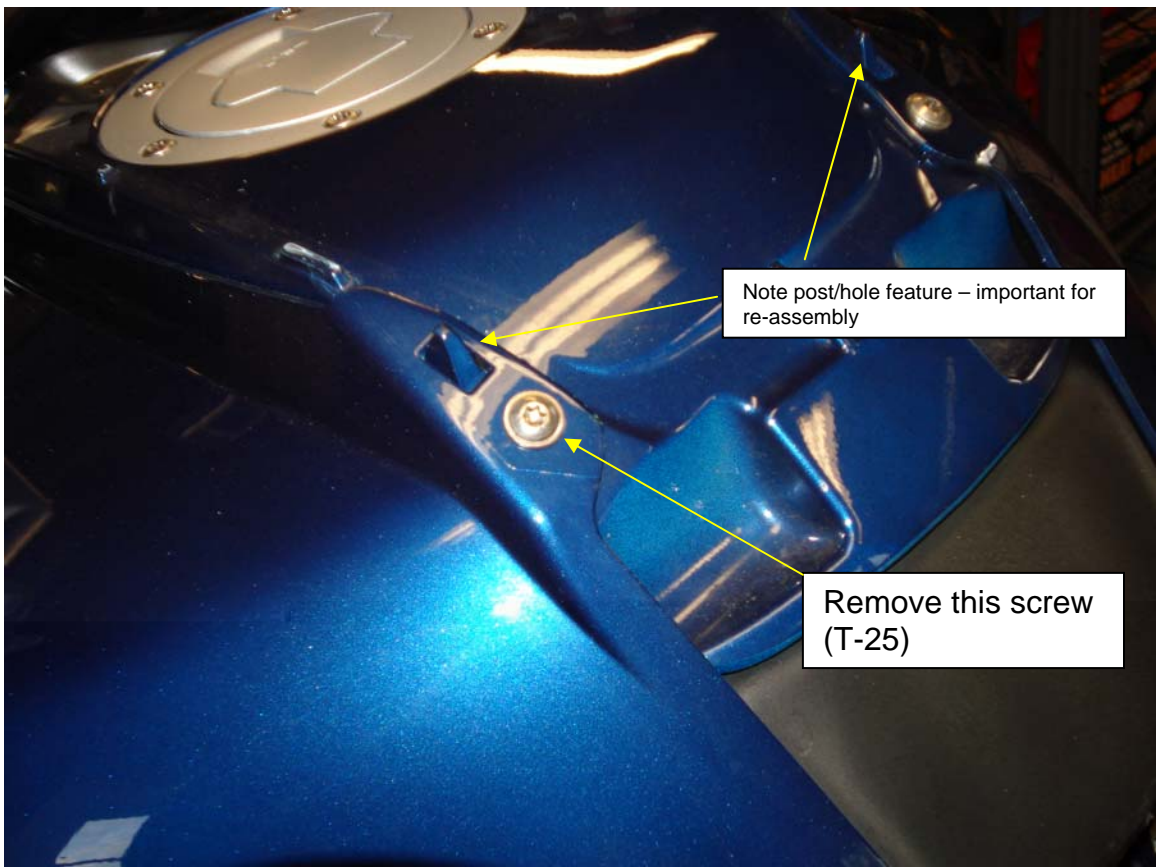
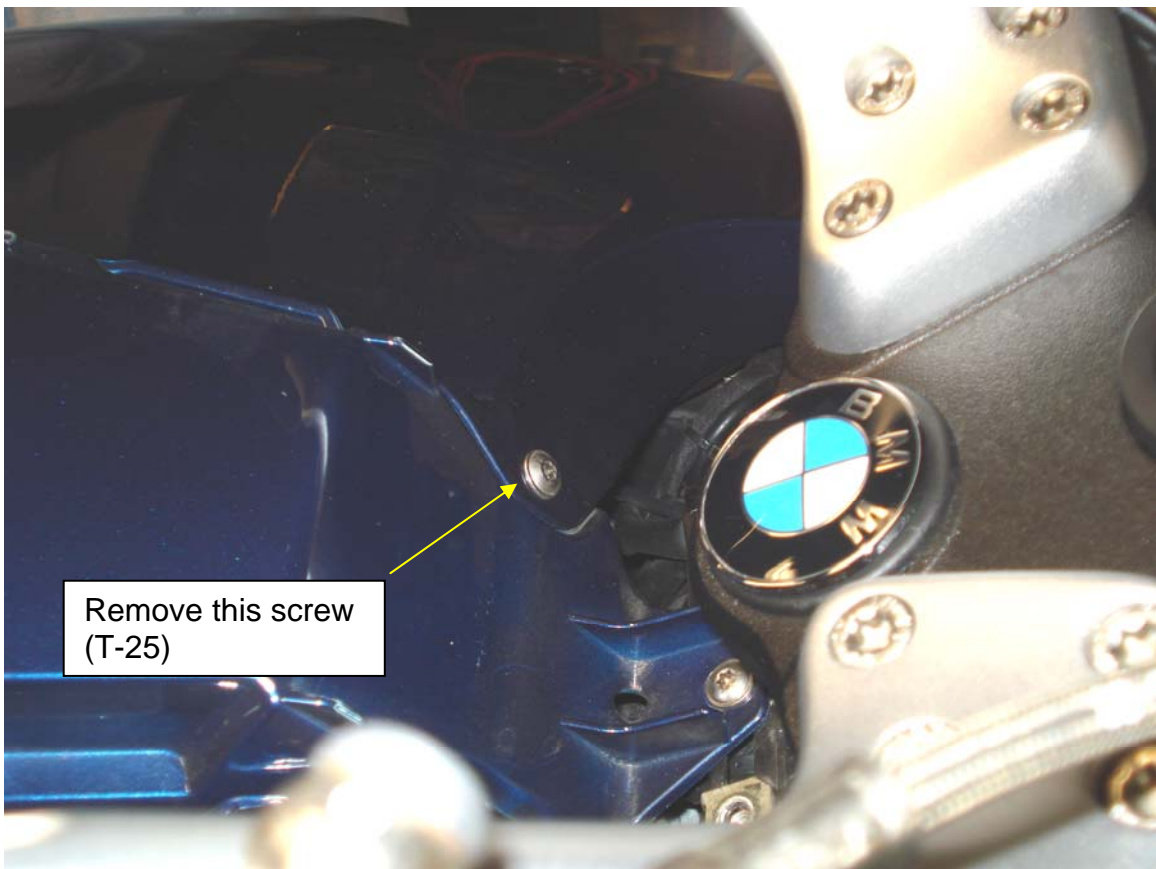
Three (3) owner installed connectors here.
1 – For the OEM Acc. Socket
2 – For the Gerbing Permanent Mount
Controller
3 – For the Volt Meter.

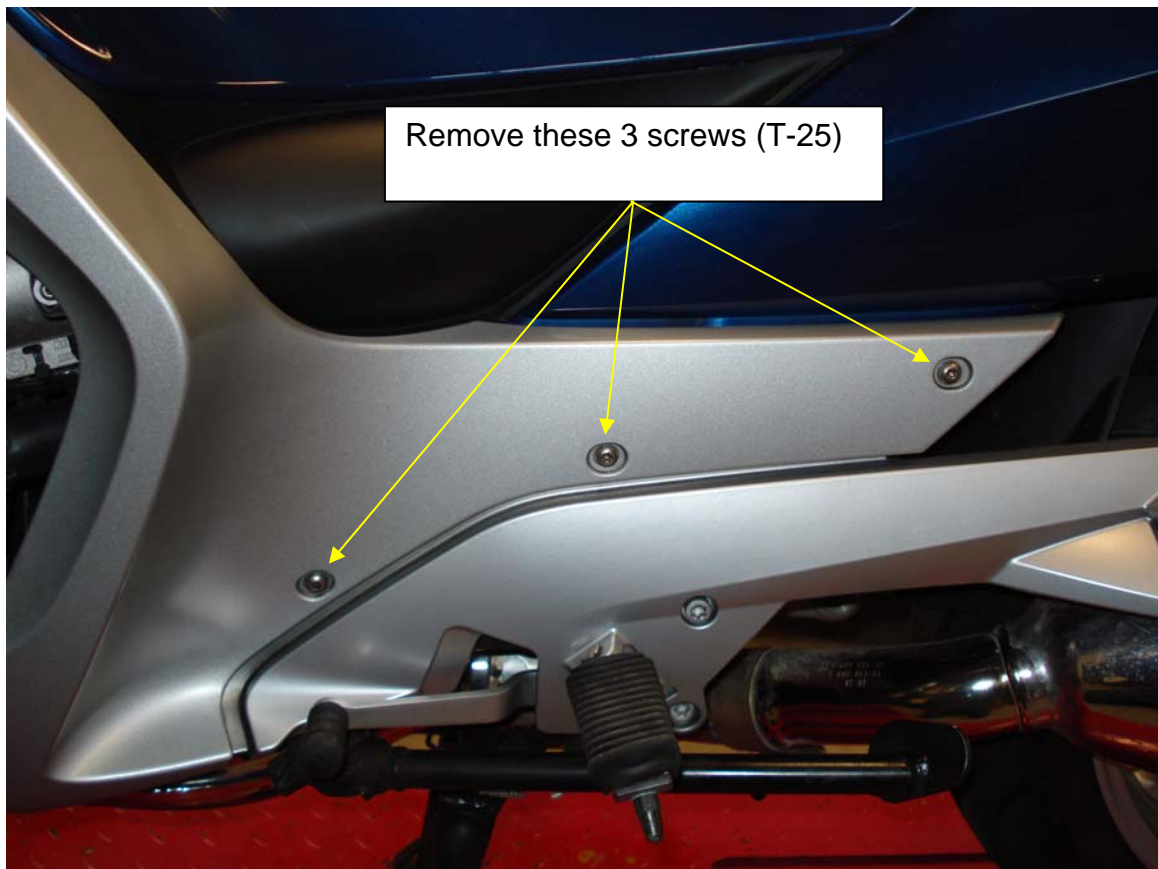
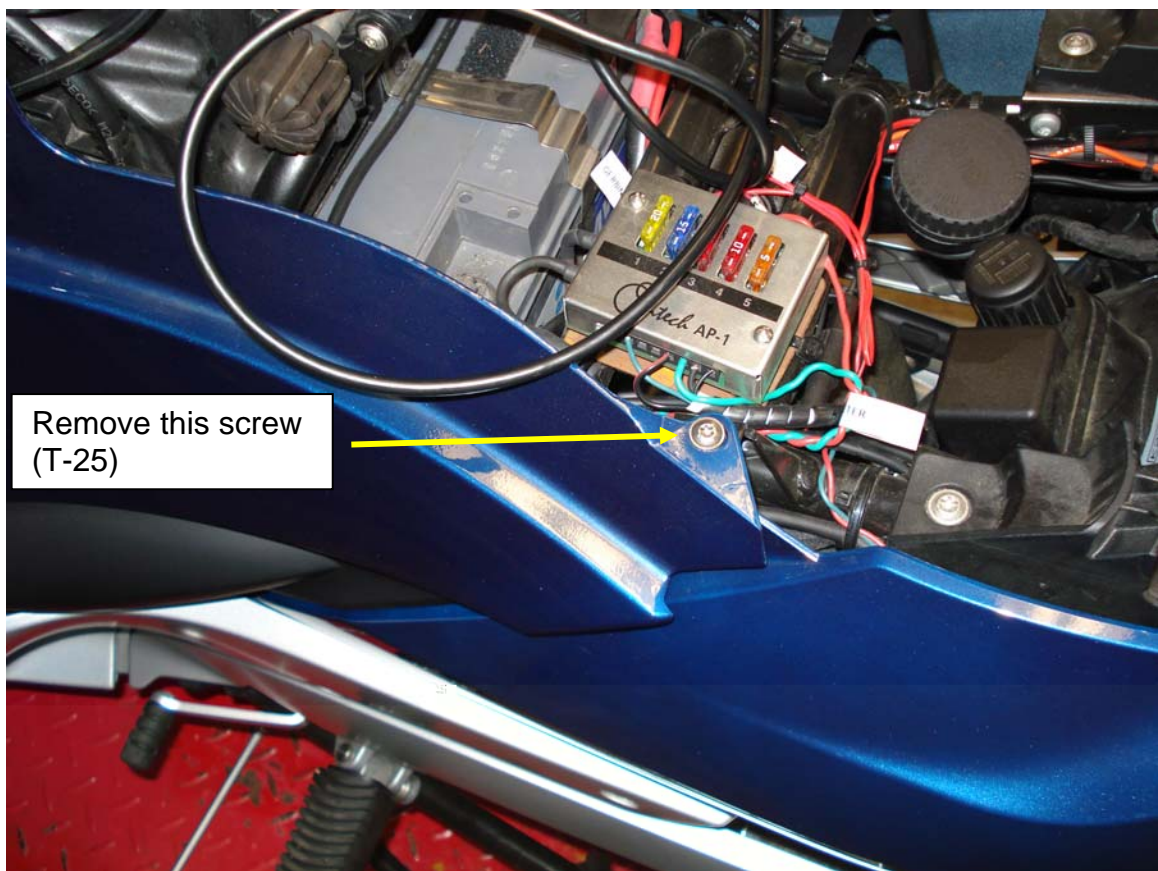
CLUTCH-SIDE LOWER PANEL REMOVAL

The Lower Panel consists of a very large piece of plastic which extends from the front by the dashboard, contacts the top of the tank to the driver's seats and around the cylinder and driver foot peg. This process removes the entire piece



This is a plastic twist lock fastener – remove and store in a safe location – it is the only plastic fastener for any panel







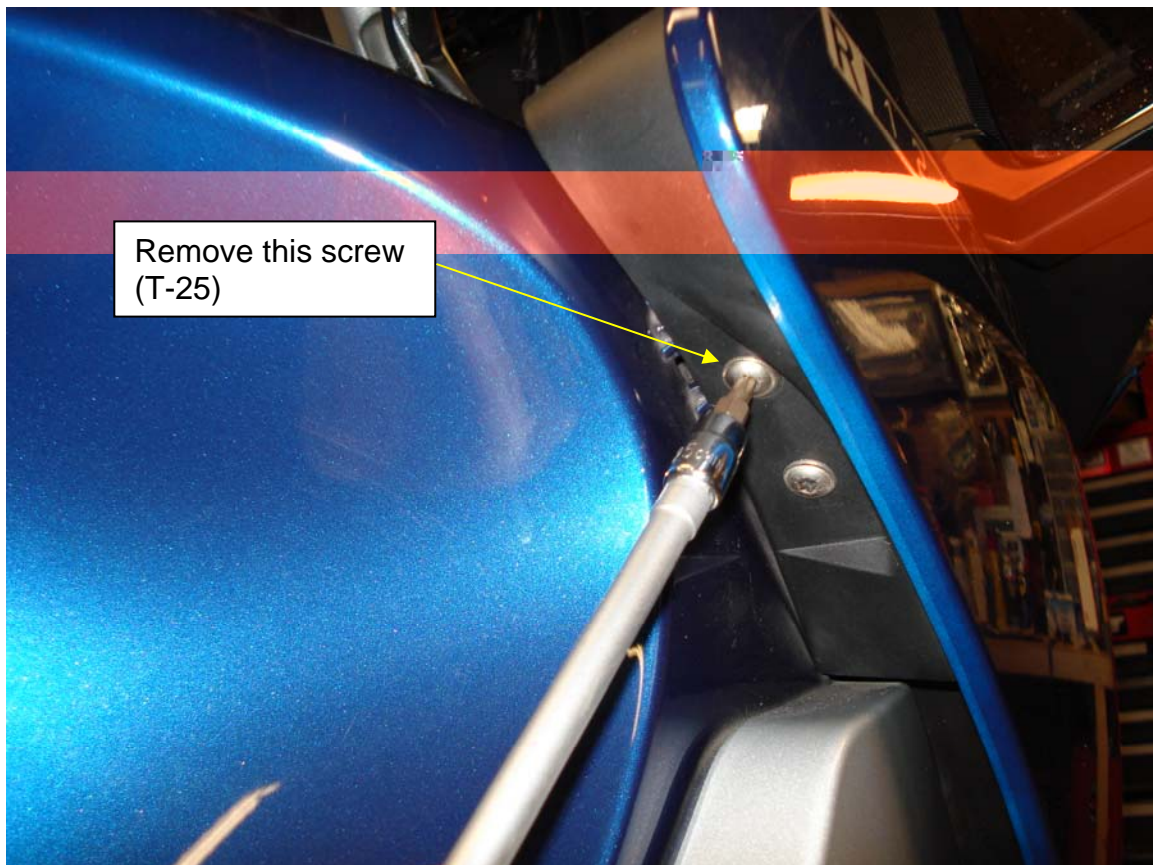
After the two T-27's are removed you can lift the entire panel off the bike and remove – please note you have to clear the cylinder head on the lower section as it has a tendency to get hung up. Set panel aside



Lower Panel screws – the 2 T-27's are on the left.

THROTTLE-SIDE SIDE PANEL REMOVAL

Please note that once the Tank Bag Mount rack is removed it does not matter which side panel is removed first.





Reference information – you are looking at the inside of the side panel from below the oil cooler. Note in the background above the bottom screw is the air temperature sensor. Standard OEM part.

Once the 4 screws are removed you can remove the side panel.

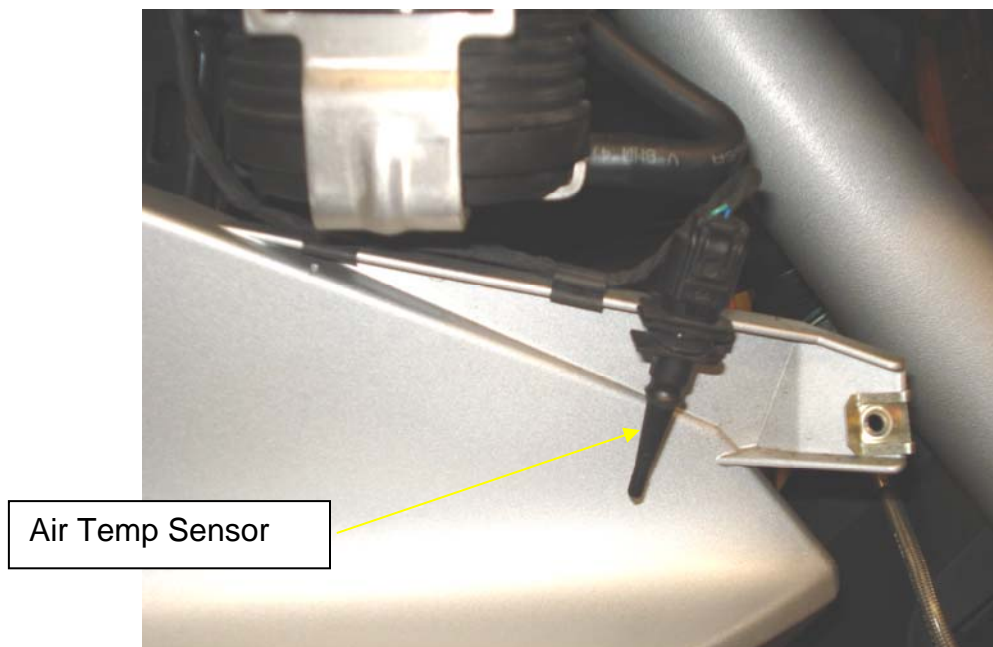
Removal process – stand facing the side panel, with left hand grasp the side towards the rear of the bike, with the other grab the front. Pull gently with your left hand towards you and at the same time push the panel to the front to clear the front of the bike. Check for the top black trim piece not to be hanging up on the dash panel.

THROTTLE-SIDE LOWER PANEL REMOVAL

The Lower Panel consists of a very large piece of plastic which extends from the front by the dashboard, contacts the top of the tank to the driver's seat and around the cylinder and driver foot peg. This process removes the entire piece

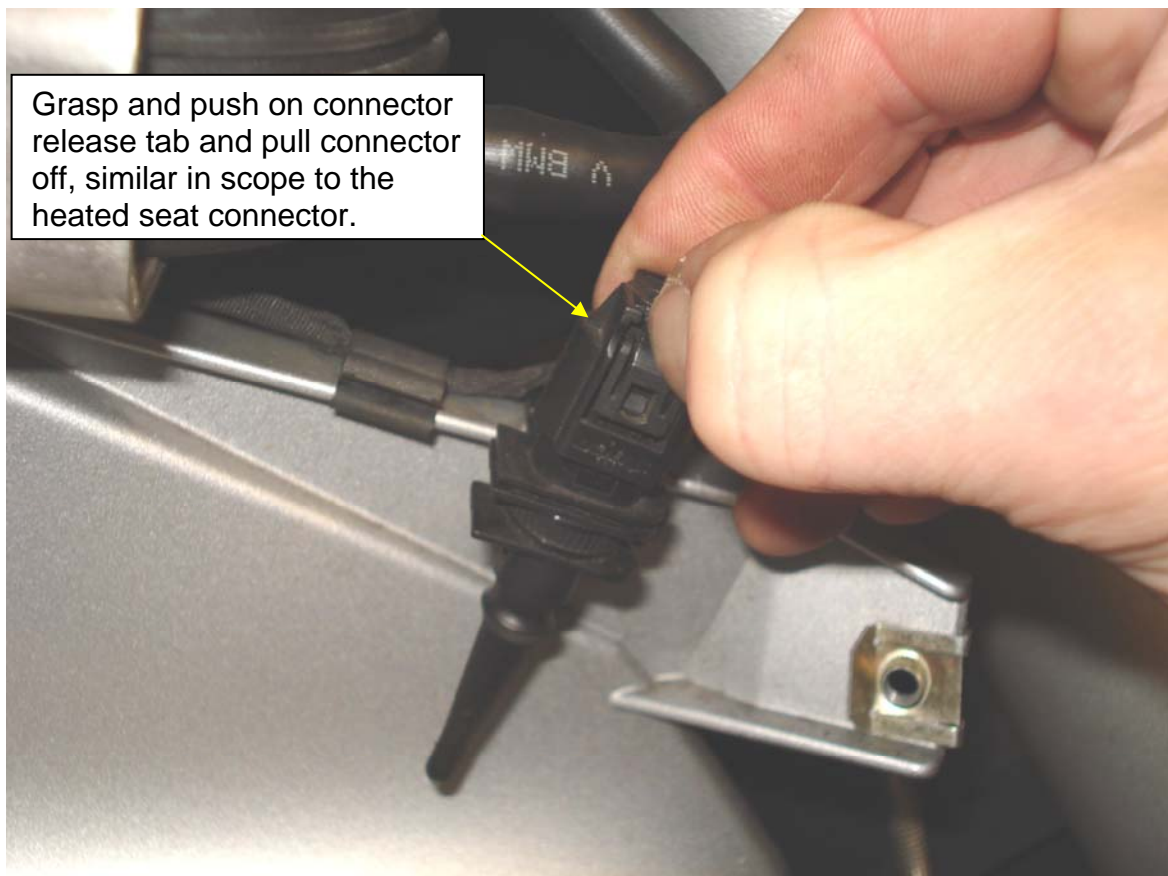
Once the Throttle-side panel is removed you need to remove 2 items from the Lower Panel to be able to remove the panel, one is the Air Temperature Sensor, and the other is the glove box door.

Again there is no specific sequence for which to remove first – the two items just need to be removed for panel extraction.

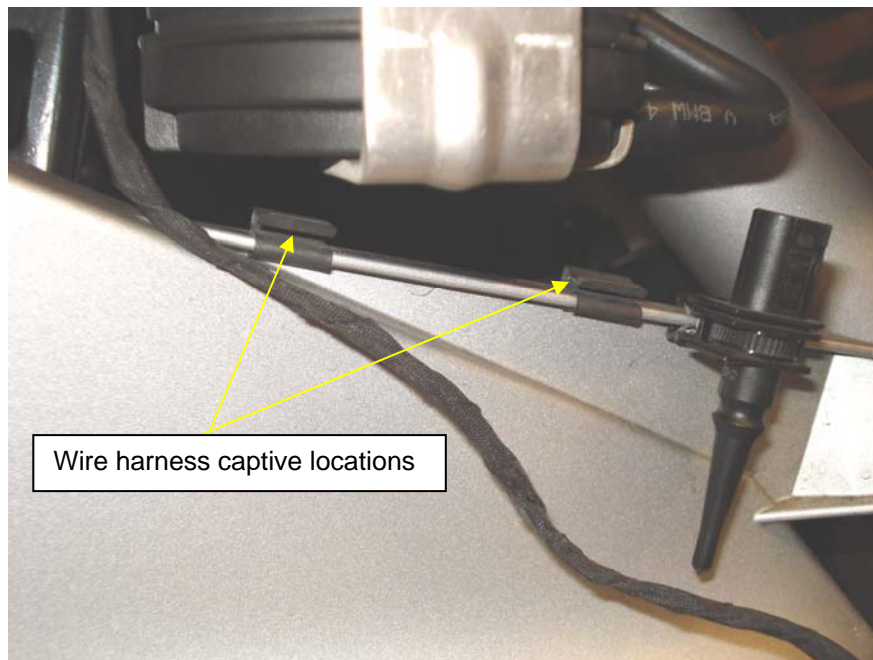


Air Temp Sensor

There are 2 options in how to remove sensor. Option 1 is to pull the sensor and the sensor wiring mounting clips of the panel. Option 2 is to pull the connector off the sensor and pull the wiring out of the clips. Below is shown how option 2 is executed.

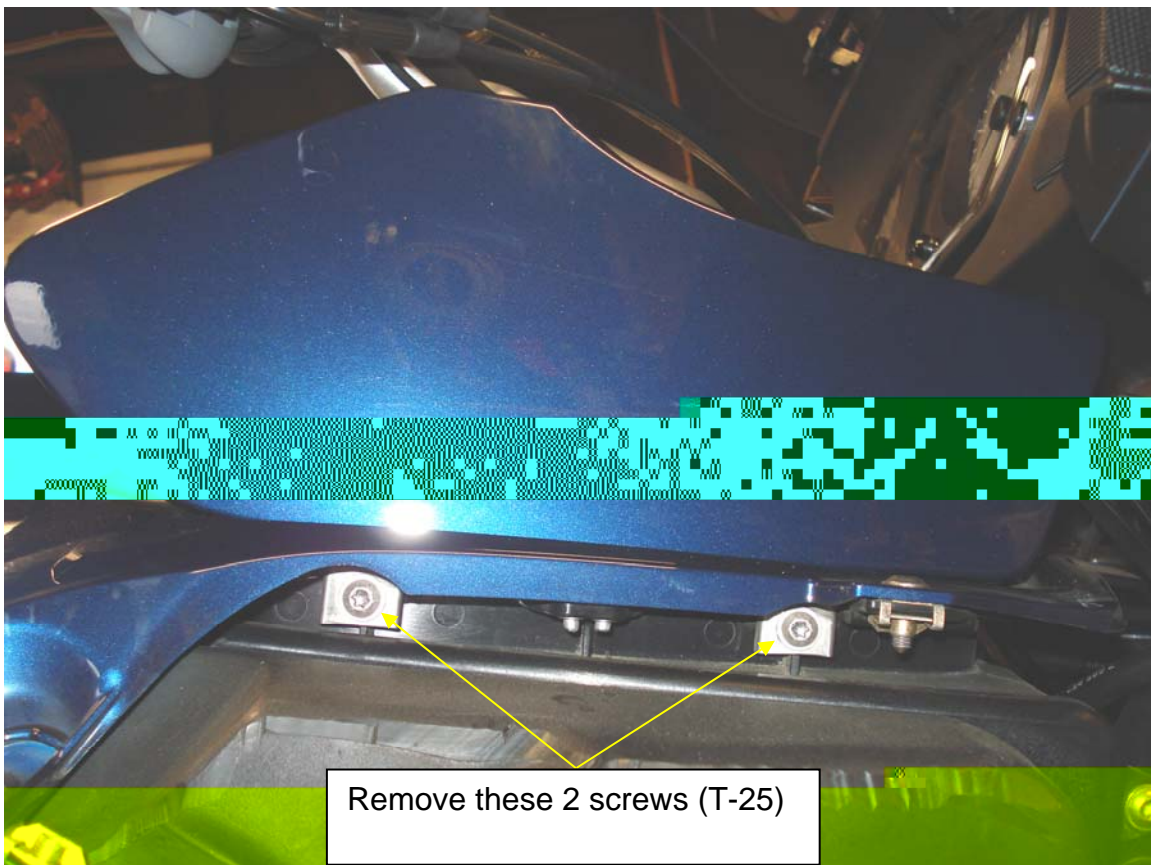


Grasp and push on connector release tab and pull connector off, similar in scope to the heated seat connector.



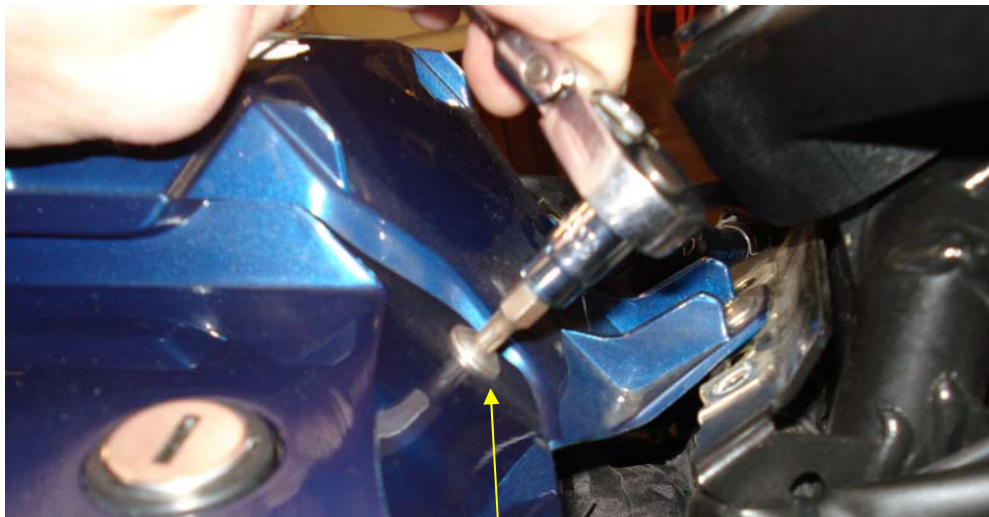
Gently pull the wire out of the captive areas of the clips. The cloth tape is very robust. If you are gentle and slow there will be no damage to the wire harness.

Glove Box Door Removal

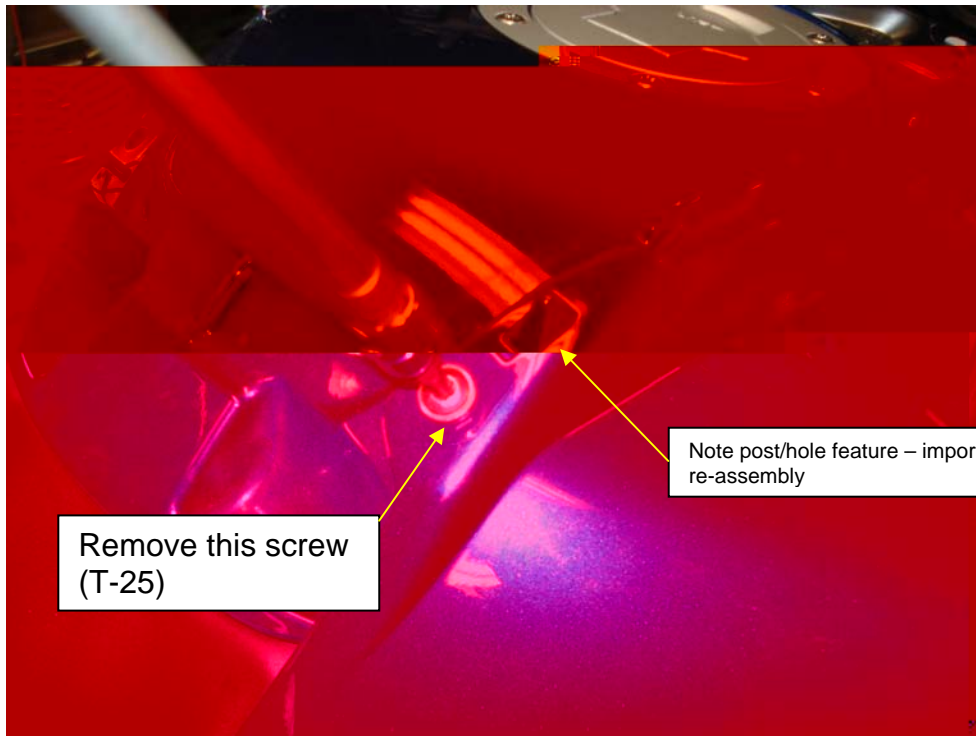


Unlock (if necessary) and unlatch the door from its normally closed position. Then remove highlighted screws and set door aside – continue with Throttle-side lower panel removal.

IMPORTANT NOTE – these 2 specific T-25's are the shortest length screws, ensure you secure the door hinges with these screws else you will cause damage to the gas tank.

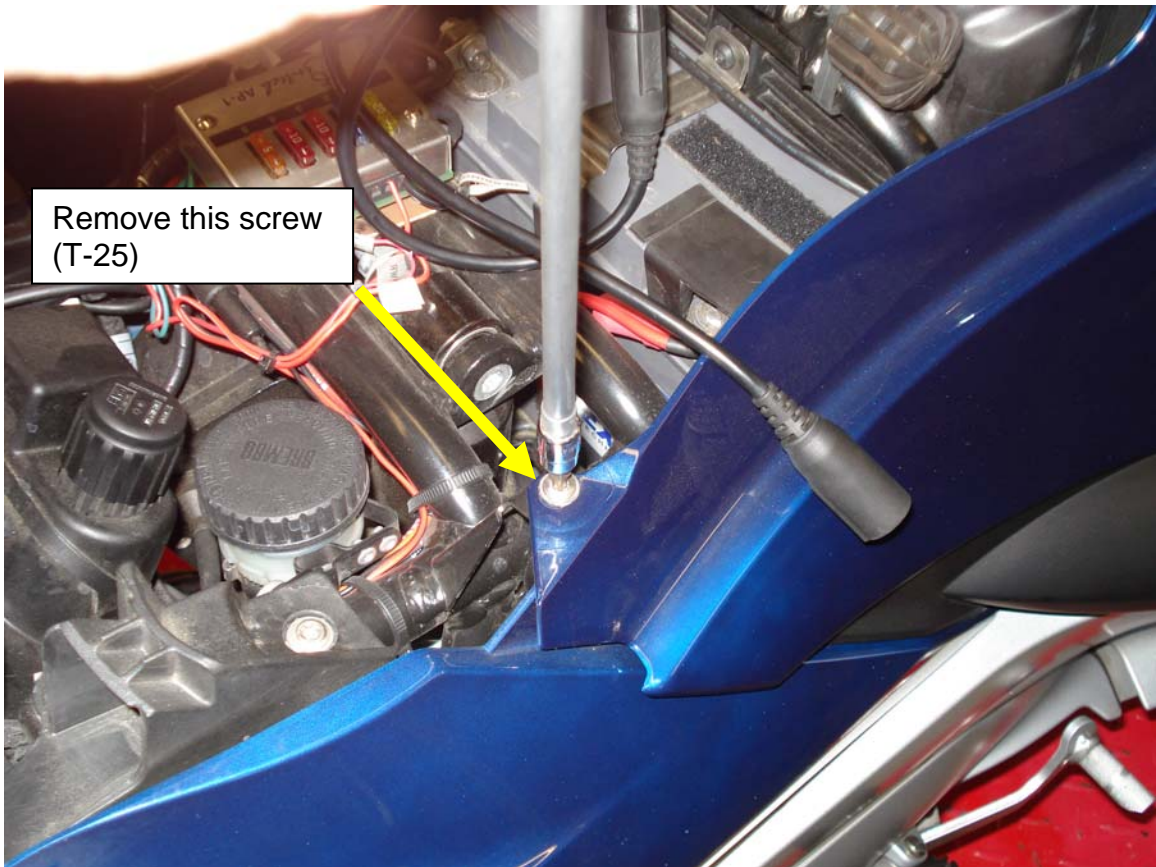
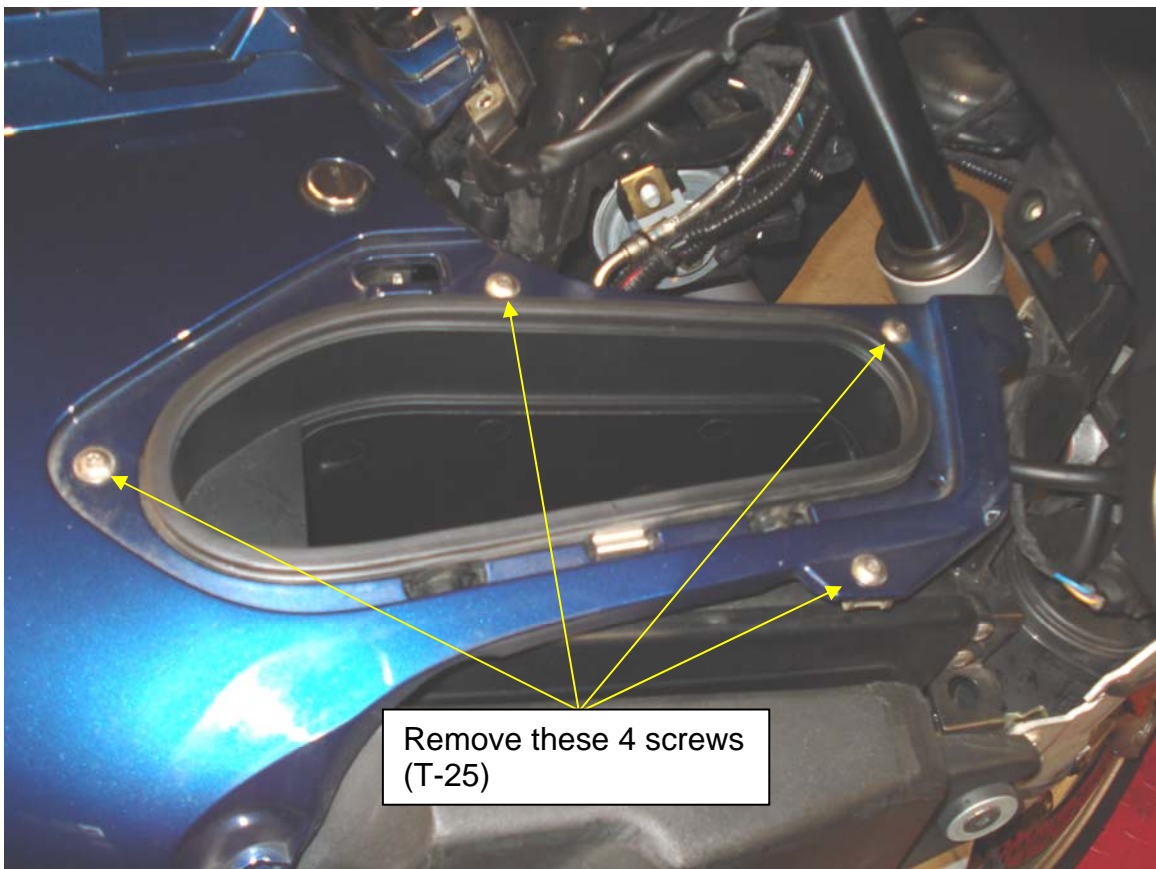


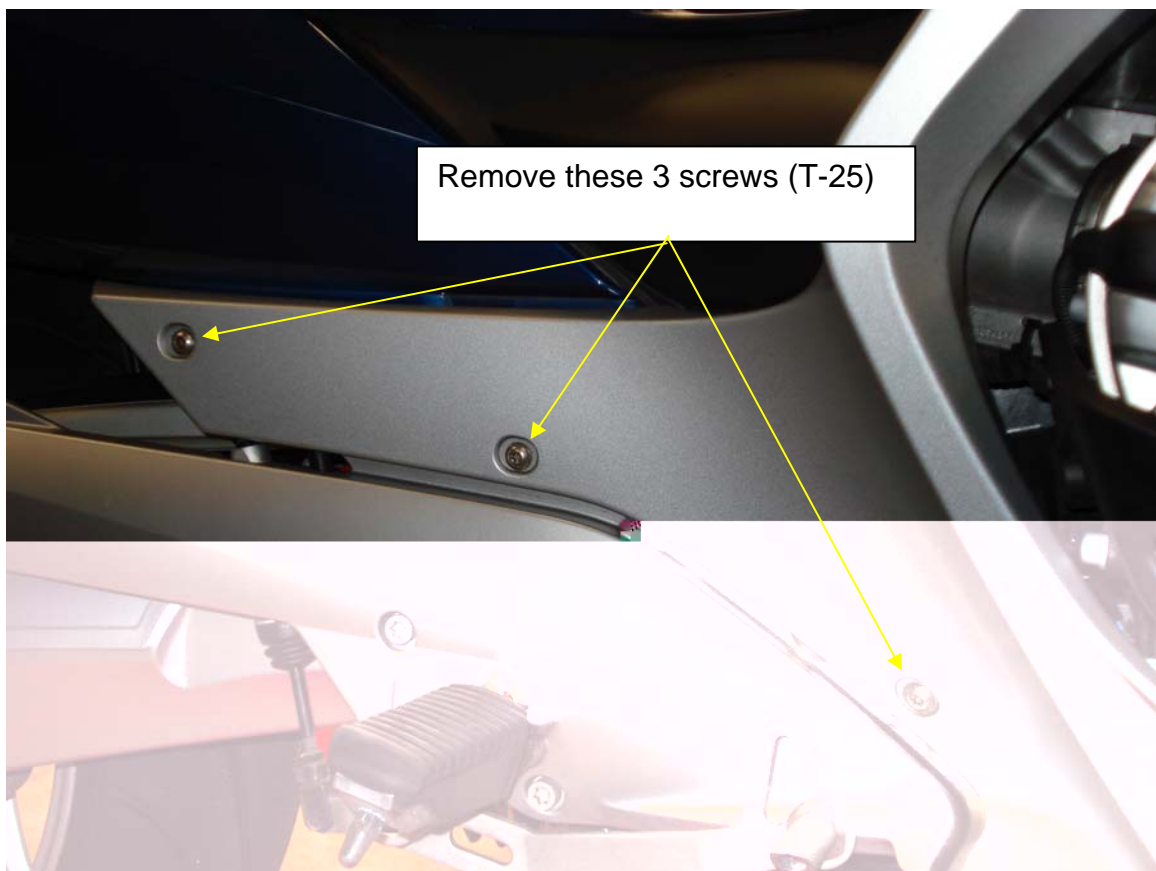
Remove this screw
(T-25) – Note no extension used as space is limited due to
proximity of the instrument panel



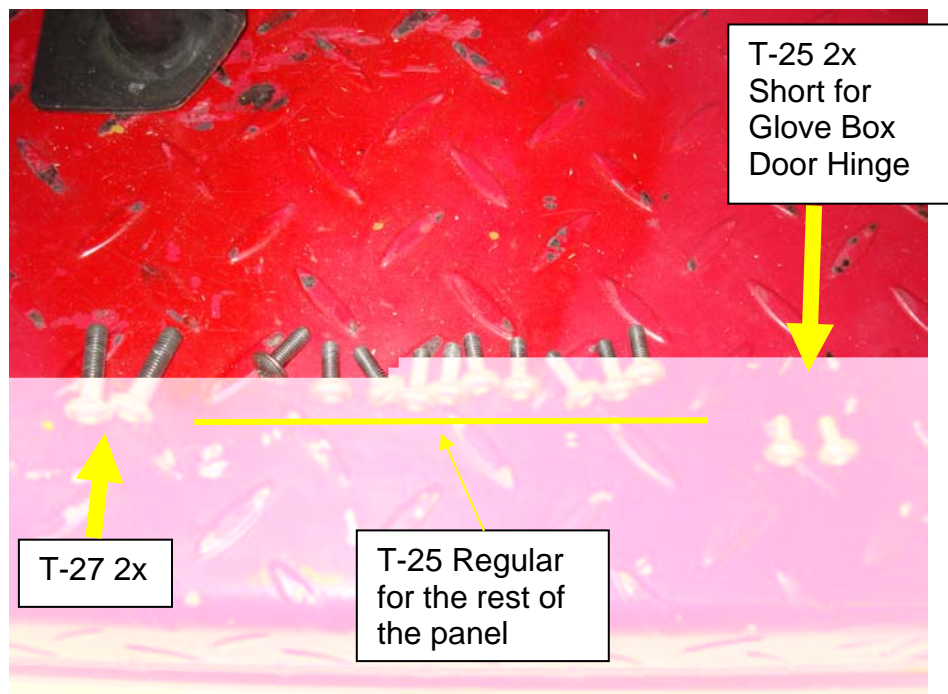
Remove this screw
(T-25)

Note post/hole feature – important for
re-assembly





After the two T-27's are removed you can lift the entire panel off the bike and remove – please note you have to clear the cylinder head on the lower section as it has a tendency to get hung up. Set panel aside

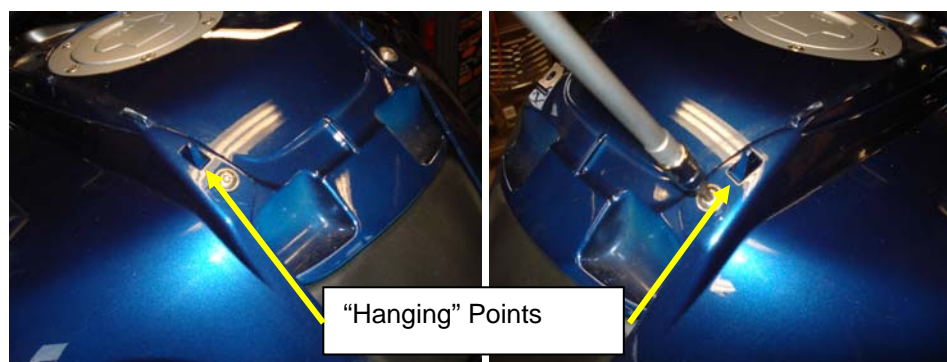


At this point, all relevant and required panels have been removed and you will have access to the entire engine. The above described panel removal is required to access the tank. Part 2 will describe Gas tank removal.

Re-assembly occurs in reverse order.

Assembly Points of Interest

- The bike assembles and disassembles cleanly and easily – if you find yourself forcing anything **STOP** because something is wrong.
- When installing the large lower panels they will go on easily, make sure that they also “hang” on the gas tank



- When putting on the side panels, “hook” the front corner by the lights first and then wrap the panel to the back to the rear.
- Small screws are for the Glove Box door hinge
- Connect the Air Temp Sensor