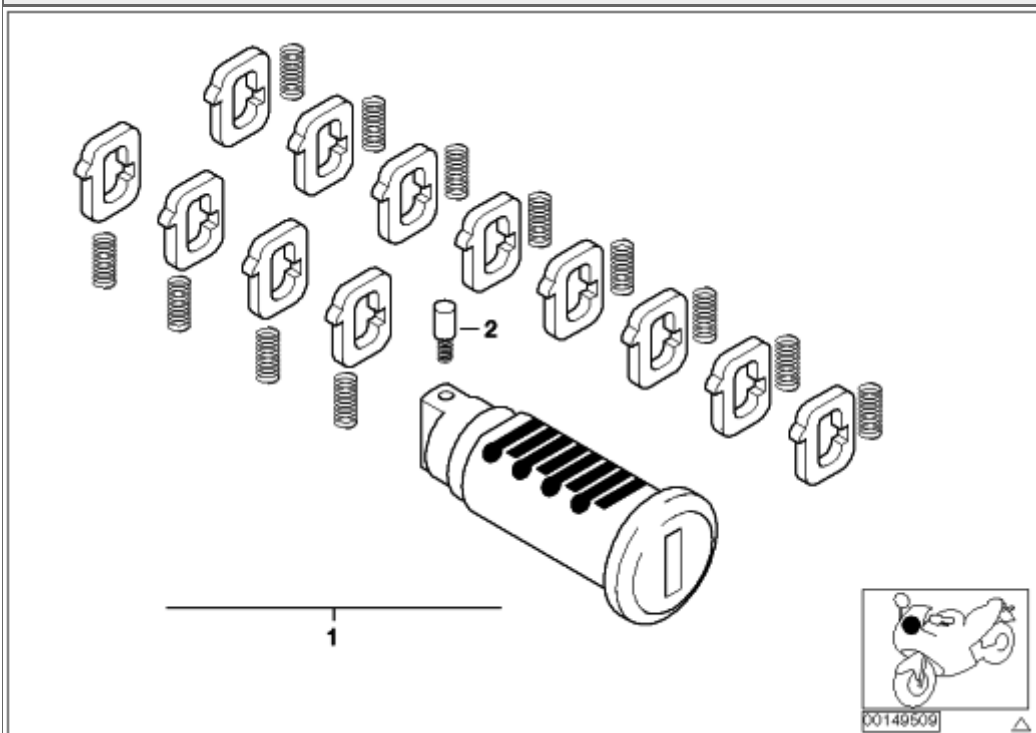
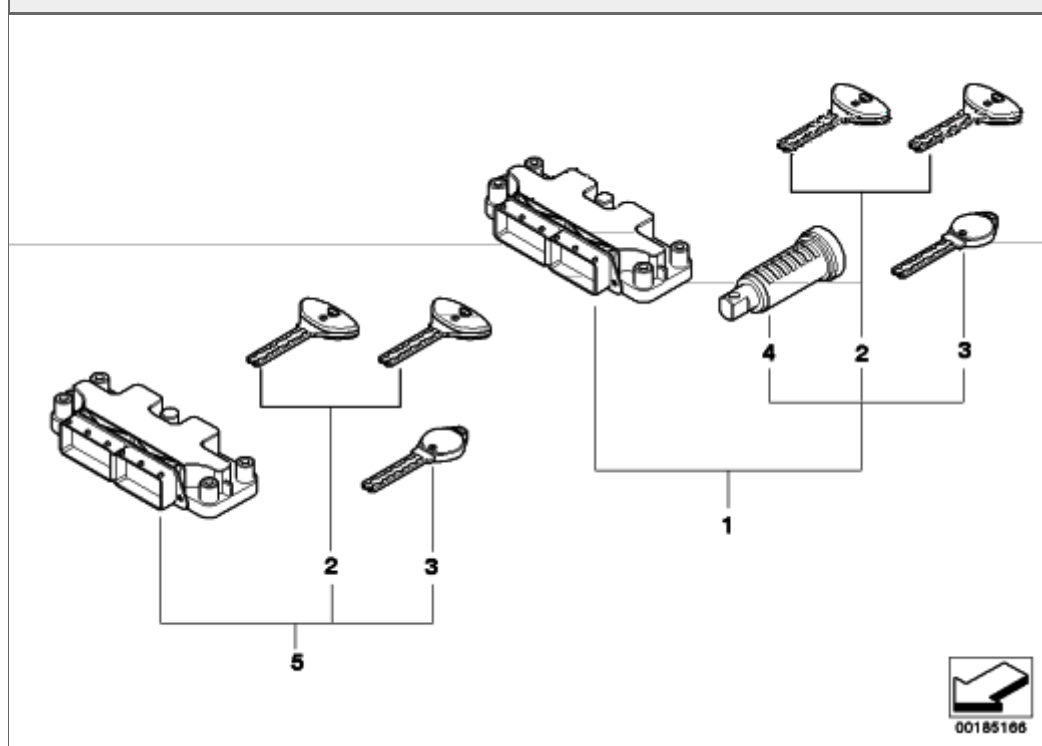


51_3316 - REP.KIT F LOCK CYLINDER



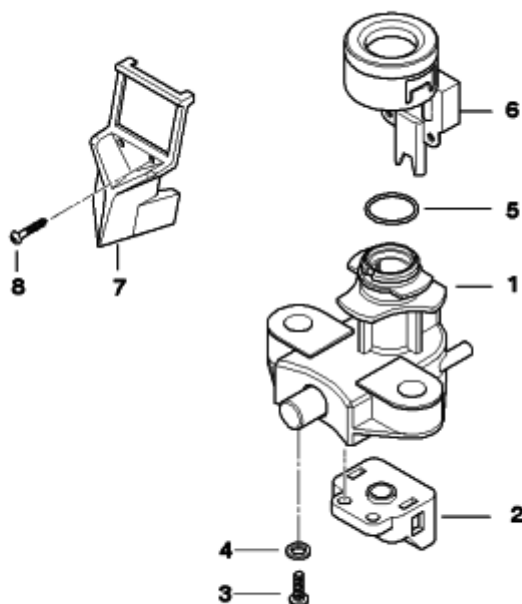
#	Part Number	Description	lb	Qty	Each
01	51257698201	SET: REP.KIT F LOCK CYLINDER STEERING LOCK	0.07	1	NA
		Needs to be coded/programmed by your dealer.			
01	51257698204	SET: REP.KIT F LOCK CYLINDER	0.07	1	NA
		Needs to be coded/programmed by your dealer.			
01	51257698204	SET: REP.KIT F LOCK CYLINDER	0.07	1	NA
		Needs to be coded/programmed by your dealer.			
01	51257698202	SET: REP.KIT F LOCK CYLINDER	0.07	1	NA
		Needs to be coded/programmed by your dealer.			
01	51257698204	SET: REP.KIT F LOCK CYLINDER	0.07	1	NA
		Needs to be coded/programmed by your dealer.			
02	51257680580	PIN		1	\$4.73


51_5340 - UNIFORM LOCKING SYSTEM



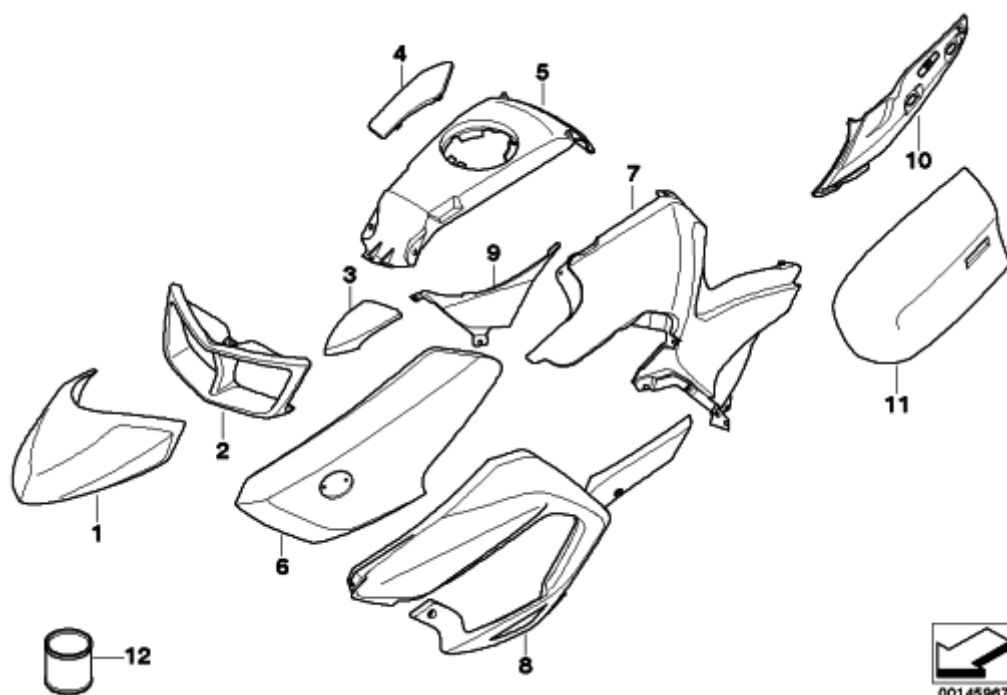
#	Part Number	Description	lb	Qty	Each
01	51258528834	SET: SET UNI LOCKING WITH BMSK ECU (CODE)		1	NA
		Needs to be coded/programmed by your dealer.			
02	51257681198	GENERAL KEY (CODE)	0.04	1	NA
		Needs to be coded/programmed by your dealer.			
03	51257681197	SPARE KEY (CODE)	0.01	1	NA
		Needs to be coded/programmed by your dealer.			
04	51257703004	LOCK CYLINDER WITH VIN CODE	0.04	1	NA
		Needs to be coded/programmed by your dealer.			
04	51257681196	STEERING LOCK (WITH KEY CODE)	0.07	1	NA
		Needs to be coded/programmed by your dealer.			
04	51257681199	LOCK CYLINDER WITH VIN CODE	0.04	1	NA
		Needs to be coded/programmed by your dealer.			
04	51257681200	LOCK CYLINDER WITH VIN CODE	0.07	1	NA
		Needs to be coded/programmed by your dealer.			
05	51258528837	SET: SET KEYS WITH BMSK ECU (CODE)	1.10	1	NA
		Needs to be coded/programmed by your dealer.			

51_5341 - IGNITION SWITCH AND MOUNTING PARTS



#	Part Number	Description	lb	Qty	Each
01	51257700072	STEERING LOCK HOUSING	0.72	1	\$118.26
02	61317681555	IGNITION SWITCH	0.07	1	\$97.97
02	61317708211	IGNITION/LIGHT SWITCH	0.07	1	\$101.66
03	51257711811	LOCK SCREW - M8	0.02	2	\$2.00
<div>  <p>This lock screw (1st image) must be drilled out to be removed. This bolt requires BMW Special Tool #51 0 531 (2nd image) to be installed. Found in the maingroup for tools. The tool will fit any 1/4" drive. If you would like a substitution for the lock screw, Order by Part Number 07119904102 (3rd image). Be sure to use blue Loctite as the substitution does not come with it factory applied.</p> </div>					
04	07119904919	WASHER		2	\$0.50
05	51252313185	O-RING		1	\$1.53
06	61357705247	RING ANTENNA	0.11	1	\$37.73
07	51257726878	COVERING CAP	0.02	1	\$7.68
08	61117651630	SCREW - M3X20		2	\$0.62

51_7926 - PAINTED PARTS WN48 POLAR MET.



#	Part Number	Description	lb	Qty	Each
01	46617724147	WHEEL COVER, FRONT	0.68	1	NA
02	46637711662	AIR DUCT, OIL COOLER	0.55	1	\$39.66
03	46637724157	MIRROR COVER, LEFT	0.33	1	NA
03	46637724158	MIRROR COVER, RIGHT	0.33	1	\$136.32
04	46547724161	FLAP, RADIO PARTITION	0.26	1	NA
05	46637708757	TANK TRIM, CENTER	0.66	1	NA
06	46637724173	LATERAL TRIM PANEL FRONT LEFT	1.68	1	NA
06	46637724174	LATERAL TRIM PANEL FRONT RIGHT	1.68	1	\$426.52
07	46637724225	LATERAL TRIM PANEL REAR LEFT	2.76	1	NA
07	46637724226	LATERAL TRIM PANEL REAR RIGHT	2.69	1	NA
08	46637724153	ENGINE SPOILER LEFT	2.76	1	\$340.83
08	46637724154	ENGINE SPOILER RIGHT	2.73	1	\$340.83
09	46637682981	COVER, THROTTLE ASSEMBLY LEFT	0.22	1	\$36.61
09	46637682982	COVER, THROTTLE ASSEMBLY RIGHT	0.22	1	\$36.61
10	46637724219	LEFT TAIL TRIM	1.50	1	NA
10	46637724220	RIGHT TAIL TRIM	1.46	1	NA
11	46547724195	COVER LEFT	4.08	1	\$482.95
11	46547724196	COVER RIGHT	4.08	1	\$482.95

51_7933 - MIRROR					
#	Part Number	Description	lb	Qty	Each

