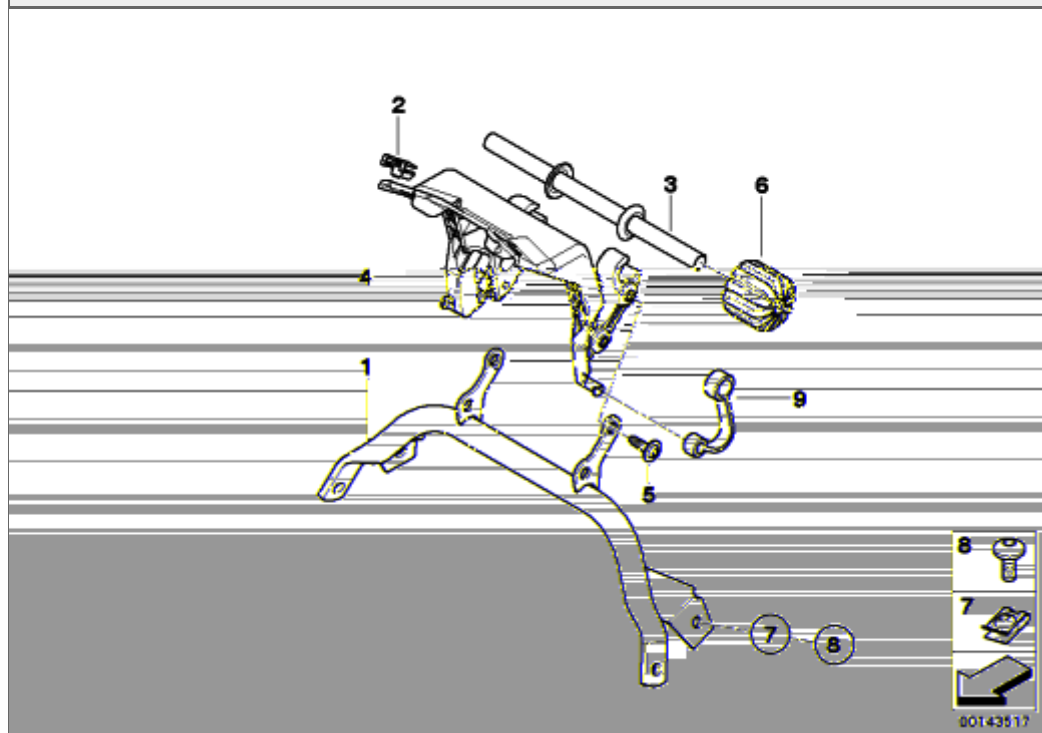
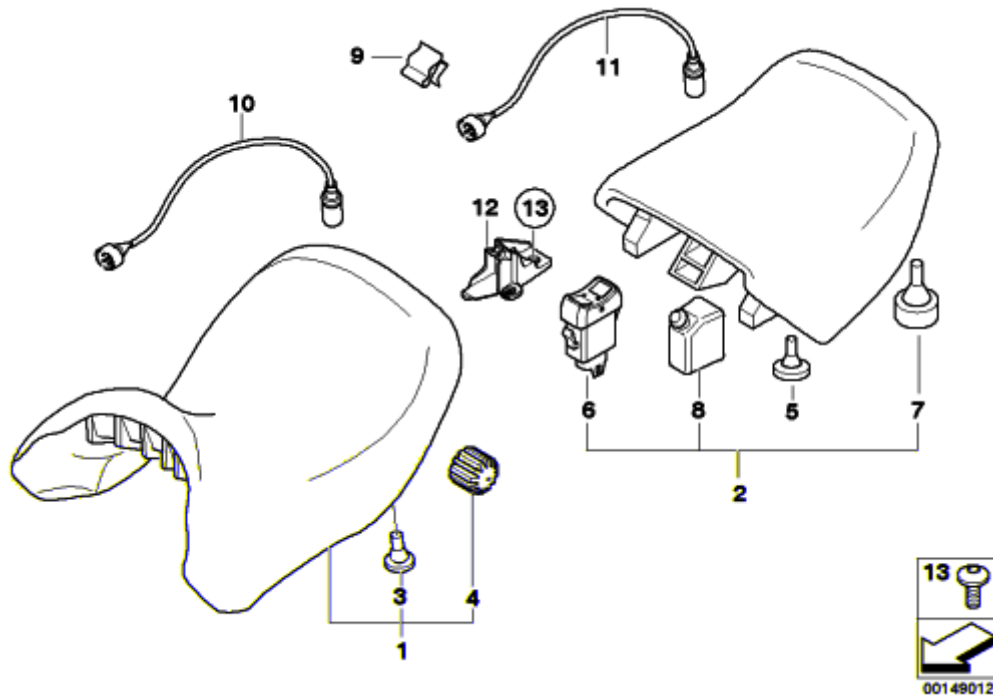


52_3213 - FRONT SEAT-VERTICAL SEAT ADJUSTER



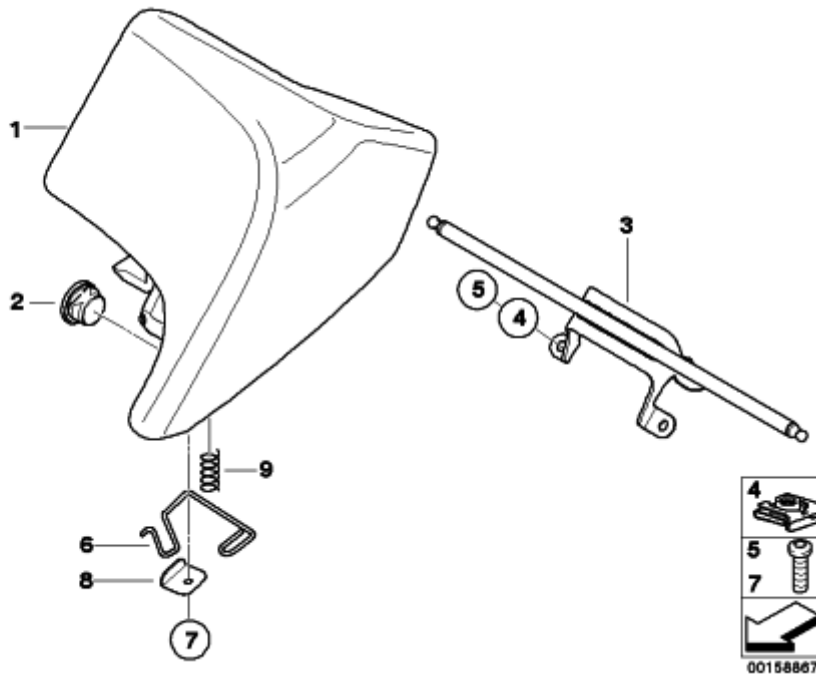
#	Part Number	Description	lb	Qty	Each
01	52537681669	CARRIER	0.60	1	\$84.19
02	46637658638	NUT - M5		2	\$1.12
This is a direct supercession to PN 52532308647.					
03	52537686426	SUPPORT	0.09	1	\$34.66
04	52537681670	CARRIER	0.22	1	\$15.06
05	51137057671	TORX-BOLT FOR PLASTIC MATERIAL - TS5X20		4	\$0.63
06	16112323615	BUMP STOP	0.07	2	\$2.00
07	51127070202	CLIP NUT - M6-ZNS3		4	\$1.05
08	46637659459	OVAL-HEAD SCREW WITH ANTI-ROTATION LOCK - M6X16		4	\$2.00
09	52537686424	TENSION STRAP		2	\$5.25

52_3214 - BENCH SEAT



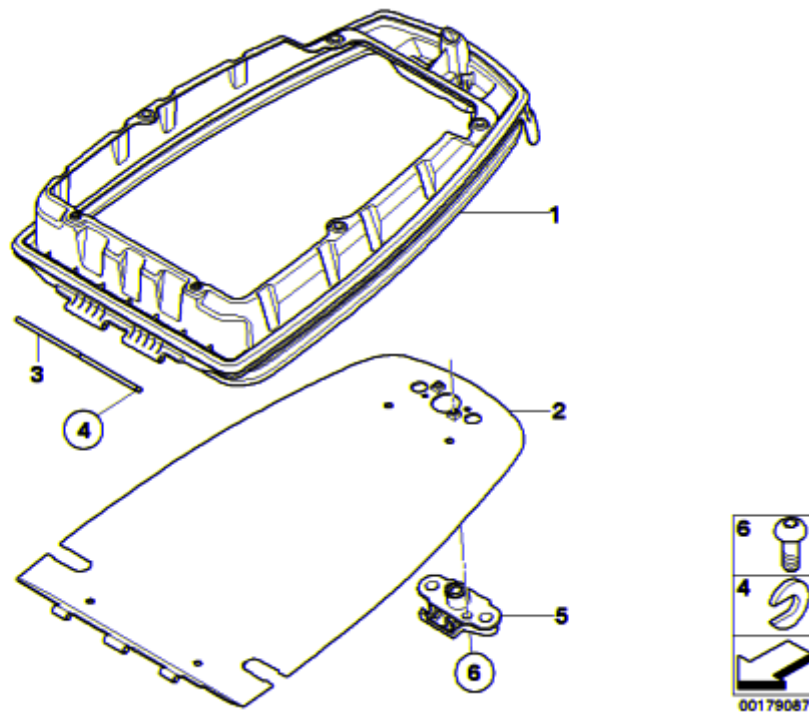
#	Part Number	Description	lb	Qty	Each
01	52537683644	SEAT, BLACK, FRONT	3.84	1	\$316.95
01	52537693037	SEAT, GREY FRONT	3.84	1	\$316.95
01	52537683636	SEAT, LOW, BLACK, FRONT	3.20	1	\$316.95
01	52537693038	SEAT, LOW, GREY, FRONT	3.20	1	\$316.95
01	77347708877	SET: SET, BENCH SEAT, EXTRA-LOW	7.28	1	\$371.95
01	52537683654	SEAT HEATED, BLACK FRONT	3.95	1	\$298.95
01	52537693039	SEAT HEATED, GREY FRONT	3.95	1	\$298.95
01	52537683648	SEAT, LOW, BLACK, FRONT	3.20	1	\$298.95
01	52537693040	SEAT HEATED, LOW, GREY FRONT	3.20	1	\$298.95
02	52537683640	SEAT, BLACK, REAR	4.10	1	\$284.95
02	52537693041	SEAT, GREY REAR	4.10	1	\$284.95
02	52537683652	SEAT HEATED, BLACK REAR	4.39	1	\$345.95
02	52537693042	SEAT HEATED, GREY REAR	4.39	1	\$345.95
03	52531230319	RUBBER SUPPORT		2	\$1.80
04	16112323615	BUMP STOP	0.07	2	\$2.00
05	52532324922	RUBBER BUFFER		2	\$2.00
06	61317679706	SEAT HEATING SWITCH, PILLION	0.02	1	\$115.95
--	52537704593	SCREW - 3,5X12		X	\$1.86
07	52537664664	BUMP STOP - H=10		2	\$2.00
08	52532313243	BUMP STOP	0.04	2	\$5.49
10	61127688145	ADAPTER CABLE FOR SEAT HEATER, FRONT	0.02	1	\$29.30
11	61127688147	ADAPTER CABLE FOR SEAT HEATER, REAR	0.07	1	\$39.22
12	52537688809	LEFT SERRATED AJUSTMENT	0.11	1	\$16.69
12	52537688810	RIGHT SERRATED AJUSTMENT	0.11	1	\$16.69
12	52537692901	LEFT SERRATED AJUSTMENT	0.11	1	\$26.68
12	52537692902	RIGHT SERRATED AJUSTMENT	0.11	1	\$26.68
13	46637659459	OVAL-HEAD SCREW WITH ANTI-ROTATION LOCK - M6X16		4	\$2.00

52_3351 - BENCH SEAT LOCK, OFFICIAL VEHICLE



#	Part Number	Description	lb	Qty	Each
01	46637692863	SEAT WEDGE, LEFT	0.86	1	\$136.17
01	46637692864	SEAT WEDGE, RIGHT	0.86	1	\$136.17
02	51167681592	RUBBER GROMMET		2	\$8.36
03	46627692860	LOCKING MECHANISM, SEAT, REAR	0.60	1	\$50.59
04	46637658638	NUT - M5		2	\$1.12
This is a direct supercession to PN 52532308647.					
05	06327651211	FILLISTER HEAD SCREW - M5X12		4	\$0.96
06	52537704145	LOCK STRIKER, LEFT	0.02	1	\$15.19
06	52537704146	LOCK STRIKER, RIGHT	0.02	1	\$15.19
07	52537704593	SCREW - 3,5X12		4	\$1.86
08	52537704147	STOP PLATE		2	\$4.89
09	46547687017	COMPRESSION SPRING		2	\$7.95

52_3513 - MOUNTING PARTS OF RADIO TELEPHONE BOX



#	Part Number	Description	lb	Qty	Each
01	46637693153	BOTTOM PART OF RADIO TELEPHONE BOX - BLACK	2.43	1	\$243.10
--	51137057671	TORX-BOLT FOR PLASTIC MATERIAL - TS5X20		X	\$0.63
--	51417067920	FILLISTER HEAD SCREW - TS 5X16		X	\$0.50
--	46637657650	FILLISTER HEAD SCREW - M5X14		X	\$1.40
--	46637658638	NUT - M5		X	\$1.12
This is a direct supercession to PN 52532308647.					
02	46637693204	CARRIER PLATE	5.64	1	\$243.10
--	06327651211	FILLISTER HEAD SCREW - M5X12		X	\$0.96
--	46637658638	NUT - M5		X	\$1.12
This is a direct supercession to PN 52532308647.					
03	46637694574	HINGE AXLE		1	\$13.50
04	07119901544	CIRCLIP - 4		1	\$0.56
05	52532328802	LOCK	0.24	1	\$51.68
06	46547685133	FILLISTER HEAD SCREW - M6X30	0.02	2	\$2.96
07	61131459066	CABLE GROMMET	0.02	2	\$3.96