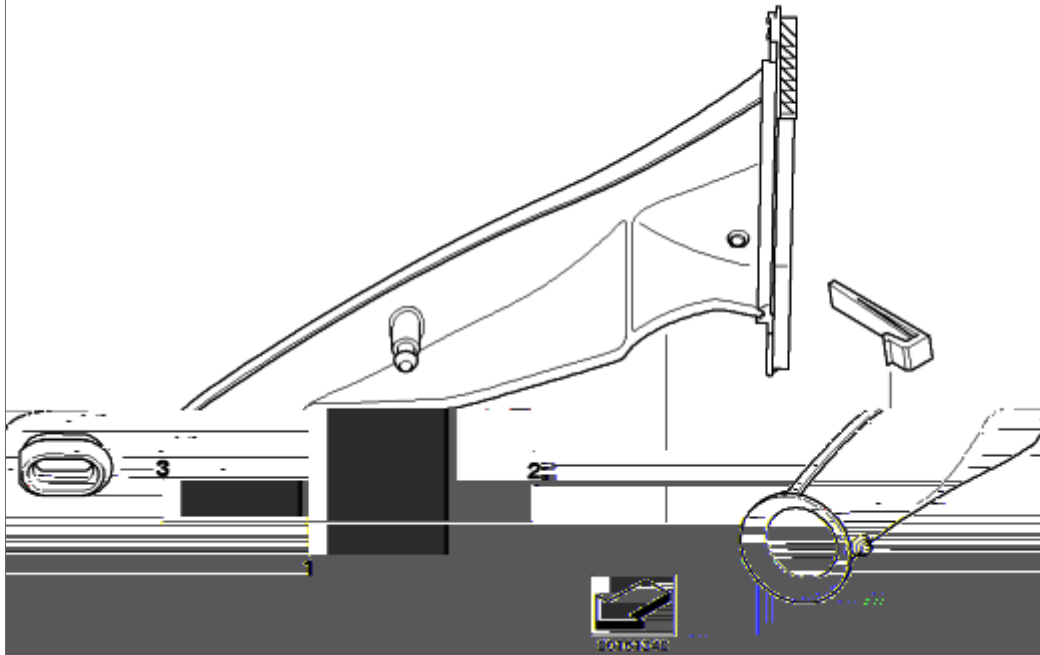
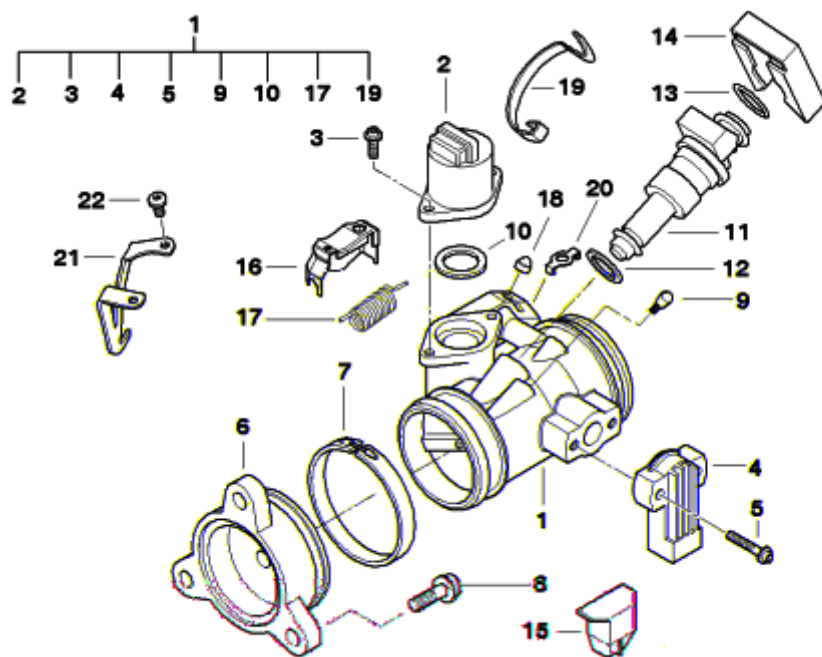



# 13\_1111 - INTAKE MANIFOLD



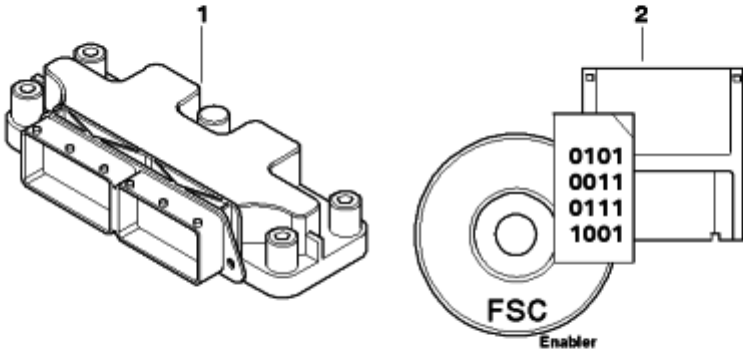
#	Part Number	Description	lb	Qty	Each
01	13717712608	INTAKE MANIFOLD	0.77	1	\$122.77
02	13717672549	LATCH STRIKER	0.02	2	\$2.22
03	13717686917	RUBBER GROMMET		1	\$2.00

# 13\_1116 - THROTTLE HOUSING ASSY



#	Part Number	Description	lb	Qty	Each
01	13547712613	THROTTLE VALVE ASSEMBLY, LEFT	1.15	1	NA
01	13547712614	THROTTLE VALVE ASSEMBLY, RIGHT	1.04	1	NA
02	13547714408	IDLE CONTROL DEVICE	0.16	2	\$101.17
03	13547682039	ISA SCREW - M5X12		2	\$2.32
04	13547696412	THROTTLE VALVE SWITCH - 4 KOHM	0.06	1	\$150.60
					
05	13547701545	ISA SCREW WITH WASHER - M4X25	0.01	2	\$1.96
06	11617710875	INTAKE MANIFOLD - D=44,2	0.15	2	NA
07	11617723636	MUFFLER CLAMP - D=60,5MM	0.02	2	\$2.63
08	07129903979	TORX SCREW - M6X20	0.02	6	\$0.96
09	13547694924	PROTECTION CAP		2	\$1.20
10	13547689063	O-RING - 18,72 X 2,62		2	\$1.41
11	13617672335	INJECTION VALVE - EV14	0.07	2	\$131.72
12	13647675557	O-RING - 8,3X3		2	\$3.67
13	13641437474	O-RING - 7,52X3,51		2	\$3.93
14	13537688795	SPRING CLIP		2	\$2.80
16	13547688633	COVERING CAP LEFT	0.04	1	\$3.93
16	13547688634	COVERING CAP RIGHT	0.04	1	\$3.93
17	13547678224	TENSION SPRING		2	\$3.17
19	13547678227	SPRING CLIP		2	\$3.63

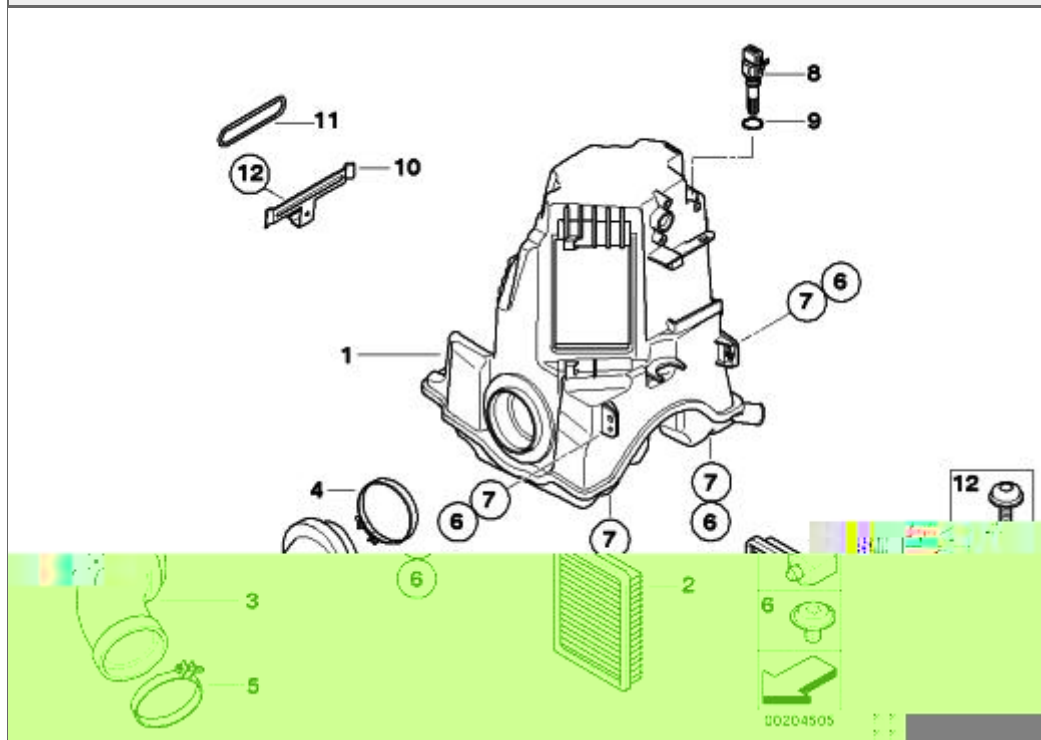
13\_1117 - BMS-K CONTROL UNIT



00161126

#	Part Number	Description	lb	Qty	Each
01	13617723394	CONTROL UNIT, UNPROGRAMMED - BMS-KP	1.26	1	\$789.49
13617723394 was superseded by 13618521661.					

# 13\_1118 - SUCTION SILENCER/FILTER CARTRIDGE



#	Part Number	Description	lb	Qty	Each
01	13717720045	INTAKE MUFFLER	3.46	1	\$247.37
02	13717706414	AIR FILTER ELEMENT	0.42	1	\$22.02
03	13717712621	SUCTION PIPE LEFT	0.44	1	NA
03	13717712622	SUCTION PIPE RIGHT	0.44	1	NA
04	13717680687	MUFFLER CLAMP - D=79.5	0.02	2	\$2.63
05	13717728769	MUFFLER CLAMP - Ø 68.0	0.02	2	\$2.63
06	41357042973	TORX-BOLT WITH WASHER - M6X8		4	\$0.88
07	13717672542	SWINGING METAL BUFFER	0.02	4	\$7.03
08	13621739510	TEMPERATURE SENSOR AIR	0.02	1	\$26.25
09	13621743299	O-RING - 8X3		1	\$1.32