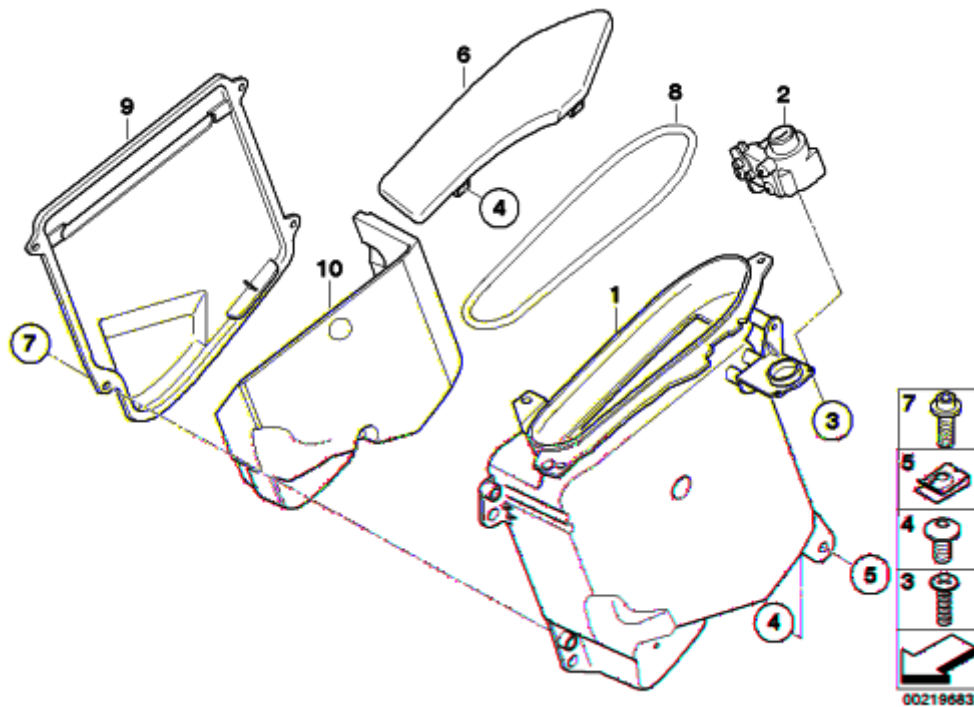

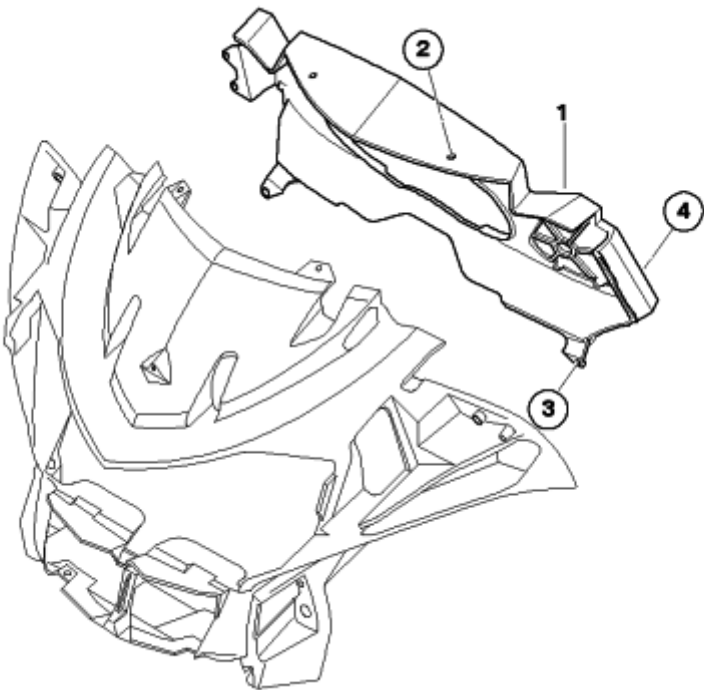


## 46\_0905 - STORING PART./MOULDING RADIO CUT-OUT



#	Part Number	Description	lb	Qty	Each
01	46637681543	BOTTOM PART OF RADIO PARTITION	1.71	1	\$79.44
02	46637681541	LOCK F RADIO PARTITION COVER	0.22	1	\$61.55
03	51410410335	TORX BOLT - ST4,2 X 22MM	0.01	3	NA
51410410335 was superseded by 51417127714.					
04	06327651212	BINDING HEAD SCREW - M5X16 SI		7	\$0.80
					
05	52532308647	NUT - M5		3	\$1.12
52532308647 was superseded by 52537658638. Superceded part is 46637658638.					
05	46637658638	NUT - M5		3	\$1.12
This is a direct supercession to PN 52532308647.					
06	46547724161	FLAP, RADIO PARTITION	0.26	1	NA
06	46547724162	FLAP, RADIO PARTITION	0.26	1	NA
06	46637724150	FLAP, RADIO PARTITION	0.26	1	NA
07	06327651211	FILLISTER HEAD SCREW - M5X12		4	\$0.96
08	46637681542	GASKET F UPPER PART	0.05	1	\$25.29
09	46637681545	COVER WITH GASKET	0.44	1	\$31.98
10	46637693206	BATTERY BRACKET, RIGHT	0.80	1	\$93.97

46\_0907 - INSTRUMENT COVER

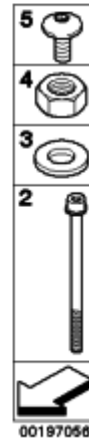
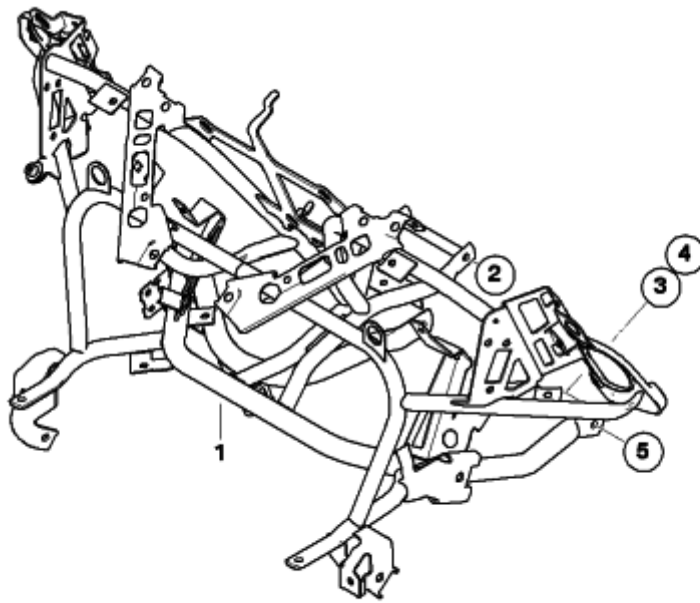


PARTS

#	Part Number	Description	lb	Qty	Each
01	46637711707	INSTRUMENT COVER	1.22	1	\$140.69
02	46632325998	FLANGED CAP SCREW - M5X16SW	0.01	2	\$1.20
03	46637658638	NUT - M5		8	\$1.12
This is a direct supercession to PN 52532308647.					
04	06327651212	BINDING HEAD SCREW - M5X16 SI		6	\$0.80

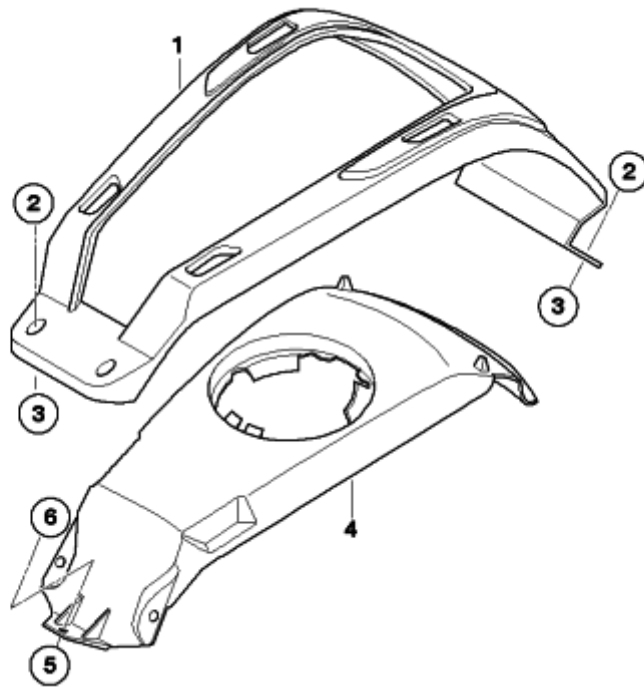




# 46\_0909 - FAIRING BRACKET



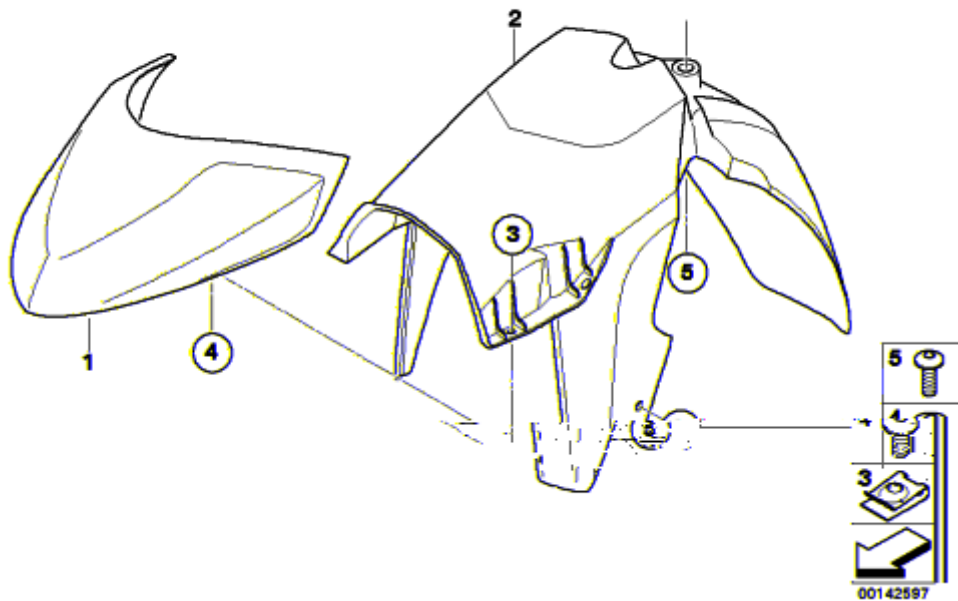
#	Part Number	Description	lb	Qty	Each
01	<b>46637723947</b>	FAIRING BRACKET	9.63	1	\$685.37
02	<b>07129904839</b>	ISA SCREW - M6X100	0.05	1	\$4.20
03	<b>07119904204</b>	WASHER - D= 6MM		1	\$1.74
04	<b>07119904030</b>	HEX NUT - M6-8-ZNS3		1	\$0.50
05	<b>07129906459</b>	ISA SCREW WITH WASHER - M6X16	0.02	2	\$1.54


46\_0910 - COVERING TANK, CENTER



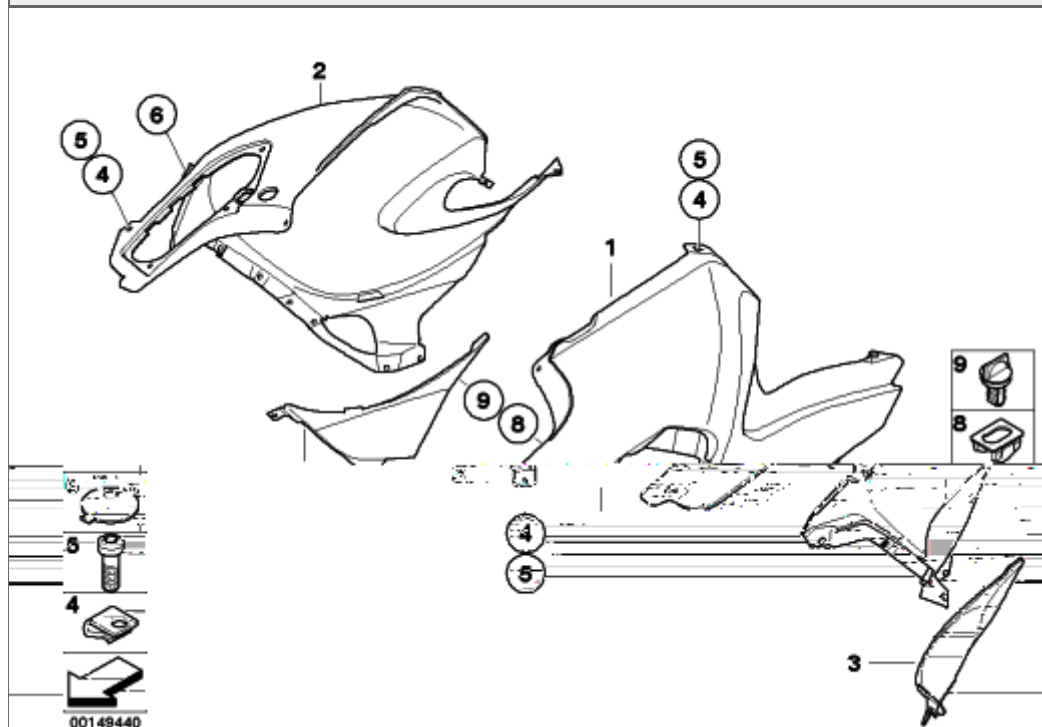
#	Part Number	Description	lb	Qty	Each
01	46637681150	LUGGAGE RAILING	1.36	1	\$262.60
02	63137655661	OVAL HEAD SCREW - M5X25		4	\$1.80
					
03	46637658638	NUT - M5		4	\$1.12
This is a direct supercession to PN 52532308647.					
04	46637708757	TANK TRIM, CENTER	0.66	1	NA
04	46637680918	TANK TRIM, CENTER	0.66	1	\$210.62
04	46637695573	TANK TRIM, CENTER	0.66	1	\$210.62
05	46637658638	NUT - M5		4	\$1.12
This is a direct supercession to PN 52532308647.					
06	06327651212	BINDING HEAD SCREW - M5X16 SI		1	\$0.80
					


# 46\_0911 - MUDGUARD FRONT



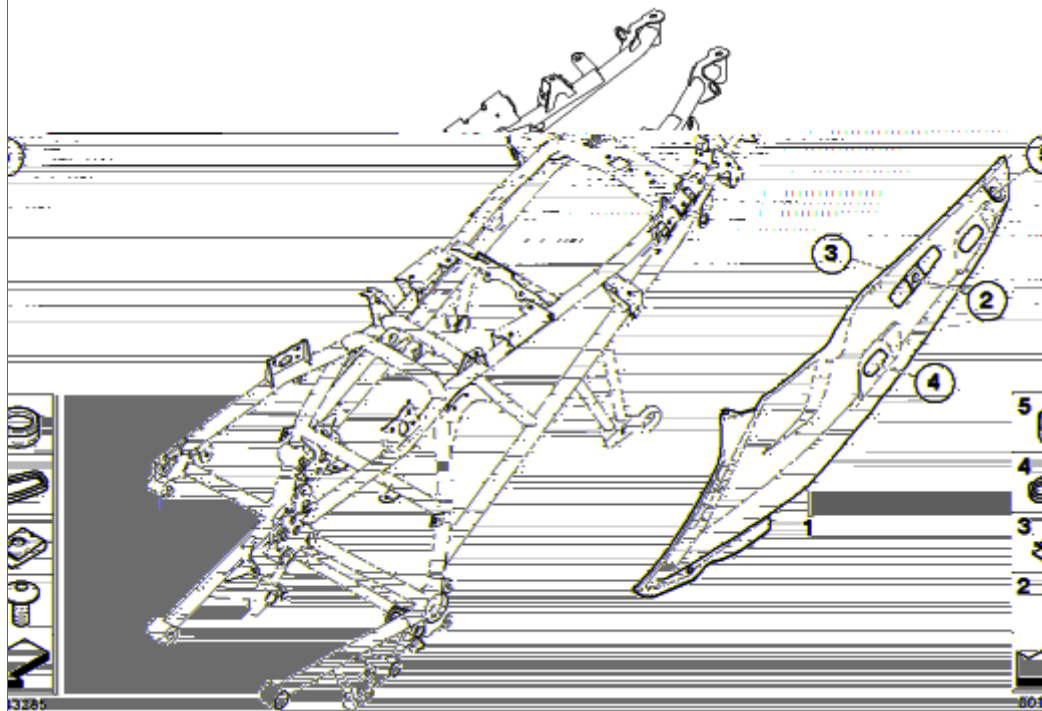
#	Part Number	Description	lb	Qty	Each
01	46617724147	WHEEL COVER, FRONT	0.68	1	NA
01	46617724148	WHEEL COVER, FRONT	0.68	1	\$244.18
01	46617724146	WHEEL COVER, FRONT	0.68	1	\$244.18
02	46617682904	FRONT FENDER, BLACK, REAR	1.68	1	\$117.56
03	46637658638	NUT - M5		4	\$1.12
This is a direct supercession to PN 52532308647.					
04	06327651212	BINDING HEAD SCREW - M5X16 SI		4	\$0.80
					
05	46637686286	FLANGED CAP SCREW - 5X16		4	\$1.40


## 46\_0915 - TRIM, SIDE SECTION, REAR



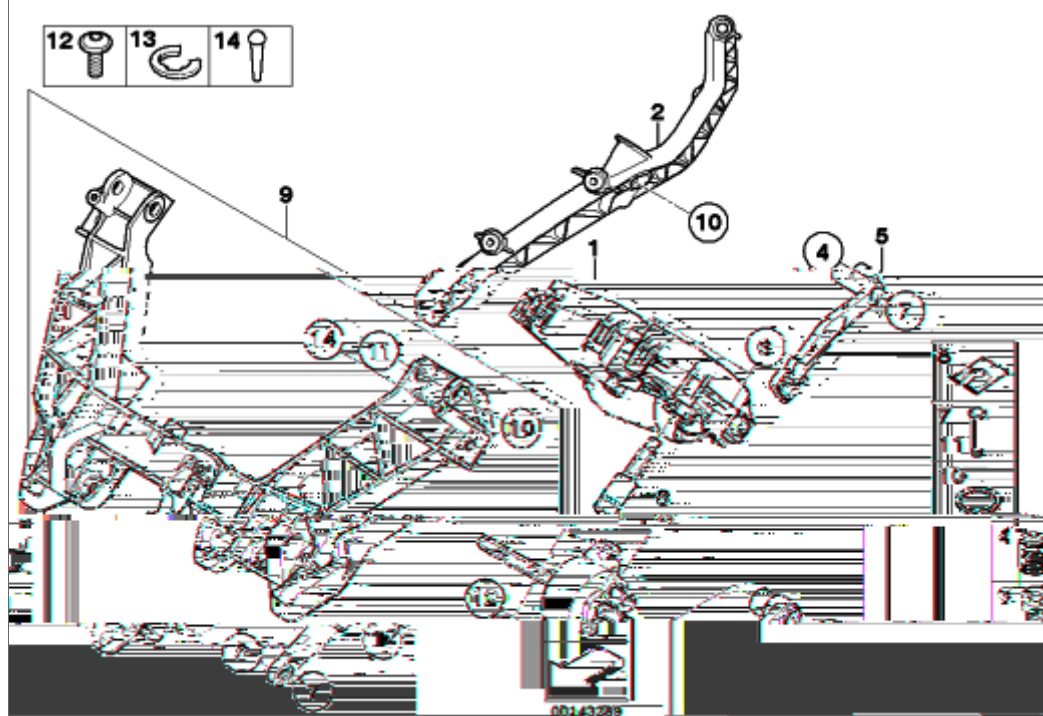
#	Part Number	Description	Lb	Qty	Each
01	46637724245	LATERAL TRIM PANEL REAR LEFT	2.76	1	NA
01	46637724223	LATERAL TRIM PANEL REAR LEFT	2.76	1	NA
01	46637724225	LATERAL TRIM PANEL REAR LEFT	2.76	1	NA
01	46637724227	LATERAL TRIM PANEL REAR LEFT	2.76	1	\$452.34
02	46637724246	LATERAL TRIM PANEL REAR RIGHT	2.69	1	\$565.42
02	46637724224	LATERAL TRIM PANEL REAR RIGHT	2.69	1	\$452.34
02	46637724226	LATERAL TRIM PANEL REAR RIGHT	2.69	1	NA
02	46637724228	LATERAL TRIM PANEL REAR RIGHT	2.69	1	\$452.34
03	46637682981	COVER, THROTTLE ASSEMBLY LEFT	0.22	1	\$36.61
03	46637682982	COVER, THROTTLE ASSEMBLY RIGHT	0.22	1	\$36.61
04	46637658638	NUT - M5		X	\$1.12
This is a direct supercession to PN 52532308647.					
05	06327651212	BINDING HEAD SCREW - M5X16 SI		X	\$0.80
					
06	46637686542	STOP BUFFER		1	\$8.36
07	46637657650	FILLISTER HEAD SCREW - M5X14		4	\$1.40
08	51711916199	LOCK INSERT		1	\$0.50
09	51711916197	LOCK		1	\$1.37

# 46\_0917 - LATERAL TRIM PANEL REAR



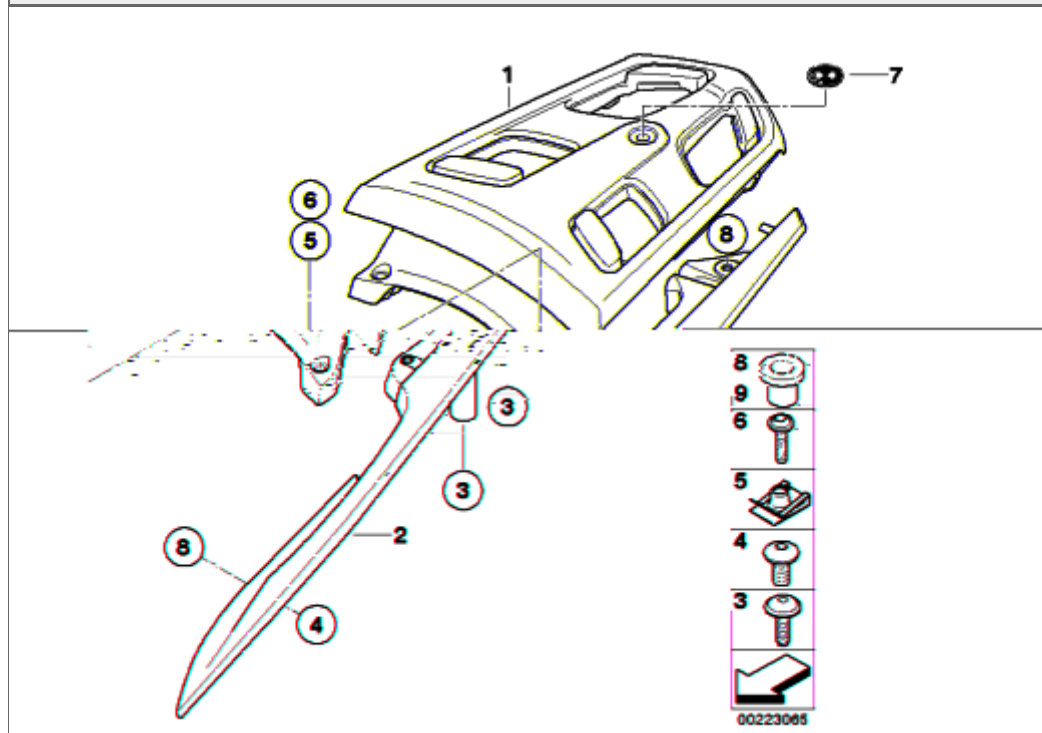
#	Part Number	Description	lb	Qty	Each
01	46637724219	LEFT TAIL TRIM	1.50	1	NA
01	46637724220	RIGHT TAIL TRIM	1.46	1	NA
01	46637724221	LEFT TAIL TRIM	1.76	1	NA
01	46637724222	RIGHT TAIL TRIM	1.74	1	\$301.95
01	46637724217	REAR LATERAL PART, LEFT	1.50	1	NA
01	46637724218	REAR LATERAL PART, RIGHT	1.46	1	\$301.95
02	06327651212	BINDING HEAD SCREW - M5X16 SI		8	\$0.80
					
03	46637658638	NUT - M5		4	\$1.12
This is a direct supercession to PN 52532308647.					
04	46637691210	GROMMET	0.07	2	\$2.37
05	12131459529	PLUG		1	\$0.60

## 46\_0918 - WINDSHIELD ADJUSTMENT, ELECTR.



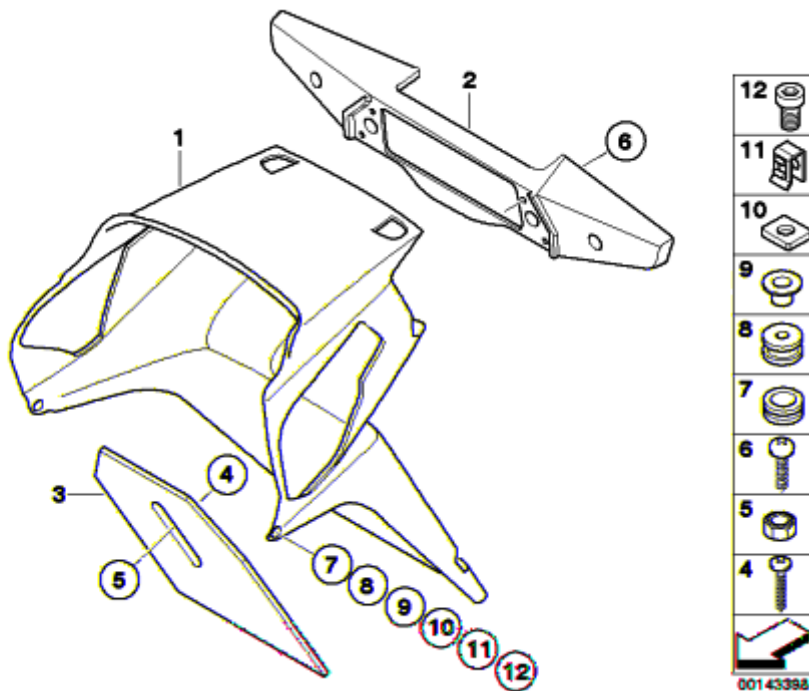
#	Part Number	Description	lb	Qty	Each
01	46637681433	ACTUATOR	1.81	1	\$344.54
02	46637681427	SUPPORT, WINDSHIELD LEFT	0.58	1	\$102.03
02	46637681428	SUPPORT, WINDSHIELD RIGHT	0.79	1	\$102.03
03	46632325745	TORX-BOLT FOR PLASTIC MATERIAL - L=35MM		3	\$1.67
04	46637693991	RETAINER SPRING LEFT	0.02	1	\$20.75
04	46637693992	RETAINER SPRING RIGHT	0.02	1	\$20.75
05	46637686677	SWINGING ARM, LONG, LEFT	0.11	1	\$60.37
05	46637686678	SWINGING ARM, LONG, RIGHT	0.11	1	\$60.37
06	46637681431	OPERATING SHAFT	0.18	1	\$81.94
07	46637693990	LINKAGE ROD, SHORT	0.02	4	\$11.45
					
08	46637693988	SECURING CLIP		2	\$4.41
09	46637681429	BASE CARRIER F WINDSHIELD ADJUSTMENT	1.11	1	\$236.89
10	07119901545	CIRCLIP - 6,0		4	\$0.56
11	46637693989	LINKAGE ROD, LONG	0.04	2	\$10.55
12	46637679374	TORX-BOLT FOR PLASTIC MATERIAL - L=12MM		2	\$1.12
13	07119902343	SECURING CLIP		2	\$3.82
14	46637681432	BUMP STOP		2	\$7.29

46\_0919 - HANDLE WITH LUGGAGE SUPPORT



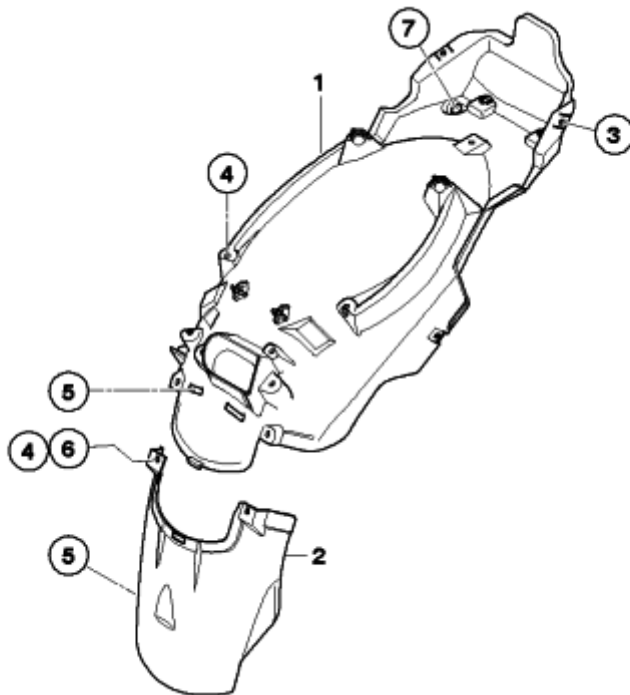
#	Part Number	Description	lb	Qty	Each
01	46547681144	LUGGAGE GRID	1.90	1	\$295.37
02	46547681147	HANDLE REAR LEFT	0.99	1	\$179.38
02	46547681148	HANDLE REAR RIGHT	1.06	1	\$179.38
--	46547653539	BUSH, LONG - D=7X9H=10.5MM		X	\$2.34
--	46547653540	BUSH, SHORT - D=7X9H=6MM		X	\$2.20
03	35217685343	OVAL HEAD SCREW - M6X20 MK	0.02	6	\$2.00
04	46627652556	FILLISTER HEAD SCREW - M6X25	0.02	4	\$2.33
05	51127070202	CLIP NUT - M6-ZNS3		2	\$1.05
06	46547684770	ISA SCREW - M6X35	0.02	2	\$3.53
07	51142308800	BADGE - D=21MM	0.01	1	\$7.63
08	46547653539	BUSH, LONG - D=7X9H=10.5MM		4	\$2.34
09	46547653540	BUSH, SHORT - D=7X9H=6MM		4	


46\_0920 - LICENSE PLATE BRACKET / SADDLE LOCK



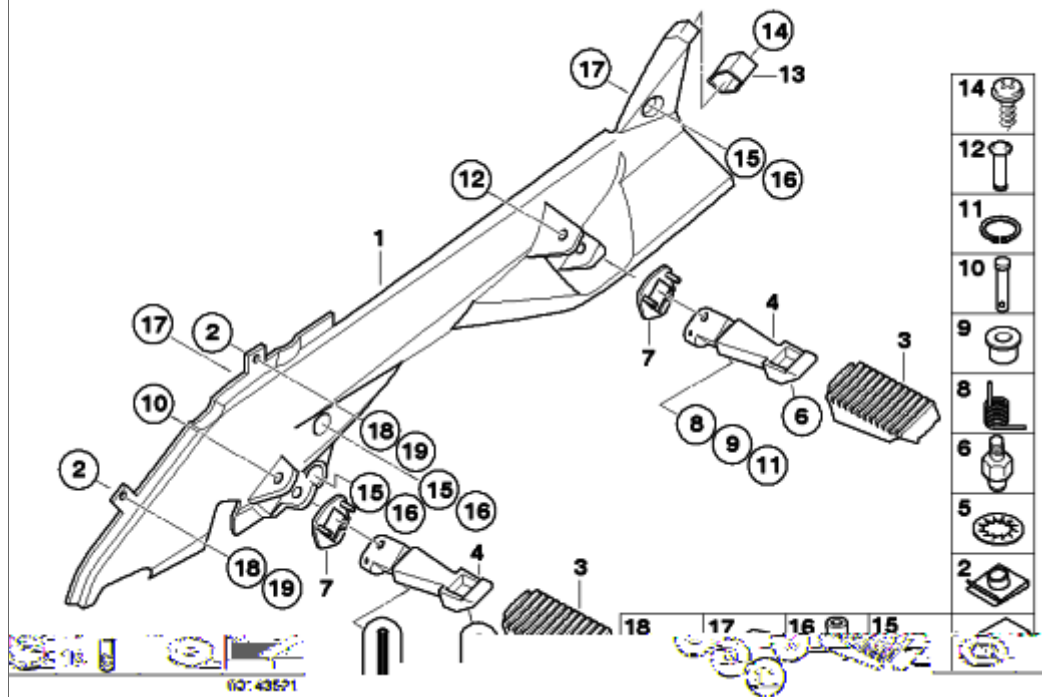
#	Part Number	Description	Lb	Qty	Each
01	46627682757	LICENCE PLATE HOLDER WITH LOCKING MECH.	2.25	1	\$229.74
					
01	46627692858	LICENCE PLATE HOLDER WITH LOCKING MECH.	1.98	1	\$292.09
02	46627682759	REAR TRAY	0.33	1	\$42.70
03	71607694184	SET: SET OF MUDGUARDS	0.44	1	\$33.50
04	46617677527	FLANGED CAP SCREW - M5X12		1	\$0.96
05	07119903070	NUT - M5-A2-70 SW		1	\$0.71
					
06	51410410335	TORX BOLT - ST4,2 X 22MM	0.01	4	NA
51410410335 was superseded by 51417127714.					
07	46631451278	INSERT		4	\$0.60
08	46631451277	GROMMET		4	\$1.54
09	46631451275	BUSH	0.02	4	\$1.16
10	07129901419	CAGE NUT - M6-6-ZNS		4	\$0.51
11	46631455425	NUT HOLDER	0.02	4	\$1.93
12	46627652556	FILLISTER HEAD SCREW - M6X25	0.02	4	\$2.33

46\_0921 - WHEEL COVER, REAR



#	Part Number	Description	Lb	Qty	Each
01	46627682856	WHEEL COVER, REAR SECTION, REAR	2.27	1	\$110.41
02	46627679918	WHEEL COVER, FRONT SECTION, REAR	0.46	1	\$27.86
03	52532308647	NUT - M5		4	\$1.12
52532308647 was superseded by 52537658638. Superceded part is 46637658638.					
03	46637658638	NUT - M5		4	\$1.12
This is a direct supercession to PN 52532308647.					
04	06327651212	BINDING HEAD SCREW - M5X16 SI		8	\$0.80
					
05	51251943711	CABLE CLAMP		6	\$0.50
51251943711 was superseded by 51257547239.					
06	46637651465	PLUG-IN NUT - M5		2	\$1.29
07	46517677827	BLIND PLUG		1	\$1.20

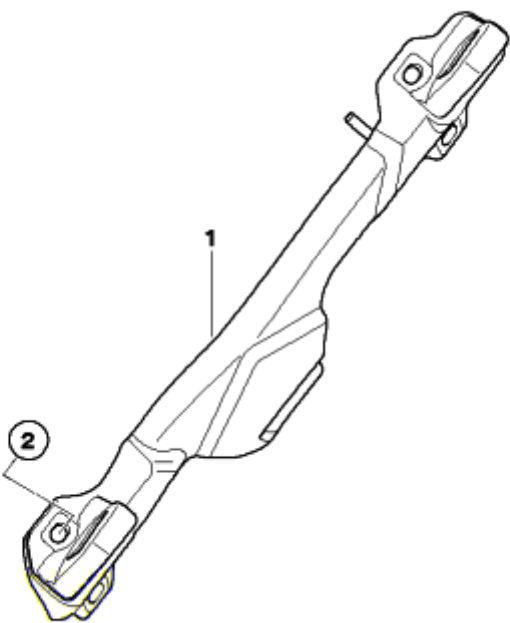
## 46\_0922 - FOOTPEG SYSTEM



#	Part Number	Description	lb	Qty	Each
01	46717675289	FOOTREST PLATE, LEFT	2.05	1	\$329.65
01	46717675290	FOOTPEG PLATE RIGHT	2.09	1	\$329.65
02	52532308647	NUT - M5		4	\$1.12
52532308647 was superseded by 52537658638. Superseded part is 46637658638.					
02	46637658638	NUT - M5		4	\$1.12
This is a direct supercession to PN 52532308647.					
03	46717664225	FOOTREST RUBBER	0.15	4	\$10.95
04	46712310403	FOOTREST, REAR LEFT	0.20	1	\$43.68
04	46712310404	FOOTREST, REAR RIGHT	0.20	1	\$43.68
04	46712330761	FOOTREST, LEFT	0.22	1	\$47.75
46712330761 was superseded by 46712330763.					
04	46712330762	FOOTREST, RIGHT	0.22	1	\$47.75
46712330762 was superseded by 46712330764.					
05	07119901505	TOOTH WASHER - A6,4		2	\$0.50
06	46712330765	STOPPER	0.02	2	\$5.47
06	46717688644	STOPPER - L=42MM	0.04	2	\$5.44
07	46717687107	THRUST WASHER, LEFT	0.02	2	\$2.36
07	46717687108	THRUST WASHER, RIGHT	0.02	2	\$2.36
08	46712310677	RETAINER SPRING LEFT	0.02	1	\$1.37
08	46712310860	RETAINER SPRING RIGHT	0.02	1	\$1.37
09	46711451632	SLEEVE		2	\$1.93
10	46717664093	PIN - 8X56,5	0.04	2	\$11.61
11	07119901545	CIRCLIP - 6,0		4	\$0.56
12	46717654258	PIN - 8X45	0.04	2	\$7.42
13	46717674211	GUIDE PLATE	0.02	2	\$4.00
14	07119900439	SELF TAPPING SCREW - CM4X10		4	\$0.87
15	07119904826	WASHER - 8-200		6	\$0.50
16	07129904066	ISA SCREW - M8X25	0.02	4	\$2.00











46\_0927 - CASE HOLDER

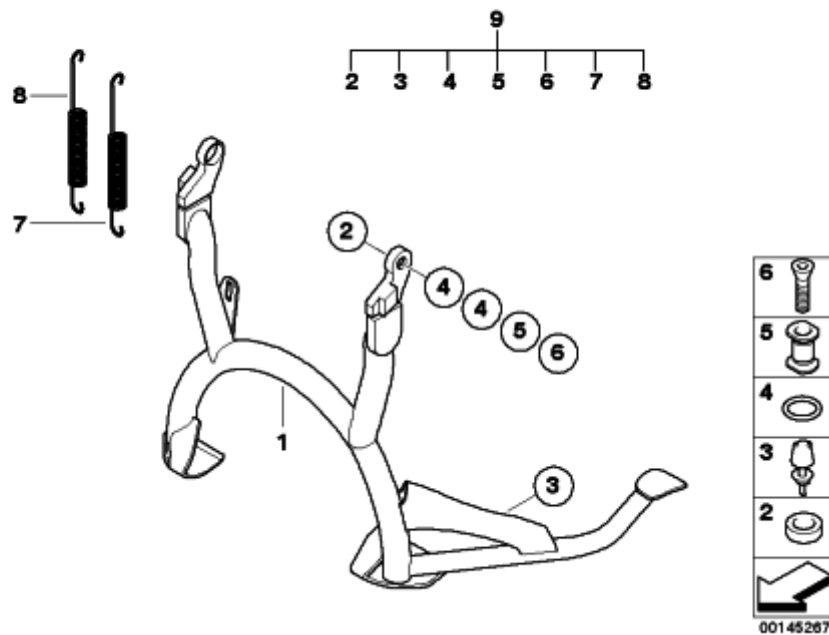




#	Part Number	Description	lb	Qty	Each
01	46547699903	LEFT CASE HOLDER	0.37	1	\$63.50
01	46547699904	RIGHT CASE HOLDER	0.37	1	\$63.50
02	07129904588	ISA SCREW - M6X16	0.01	8	\$0.96

46\_0928 - REAR FRAME

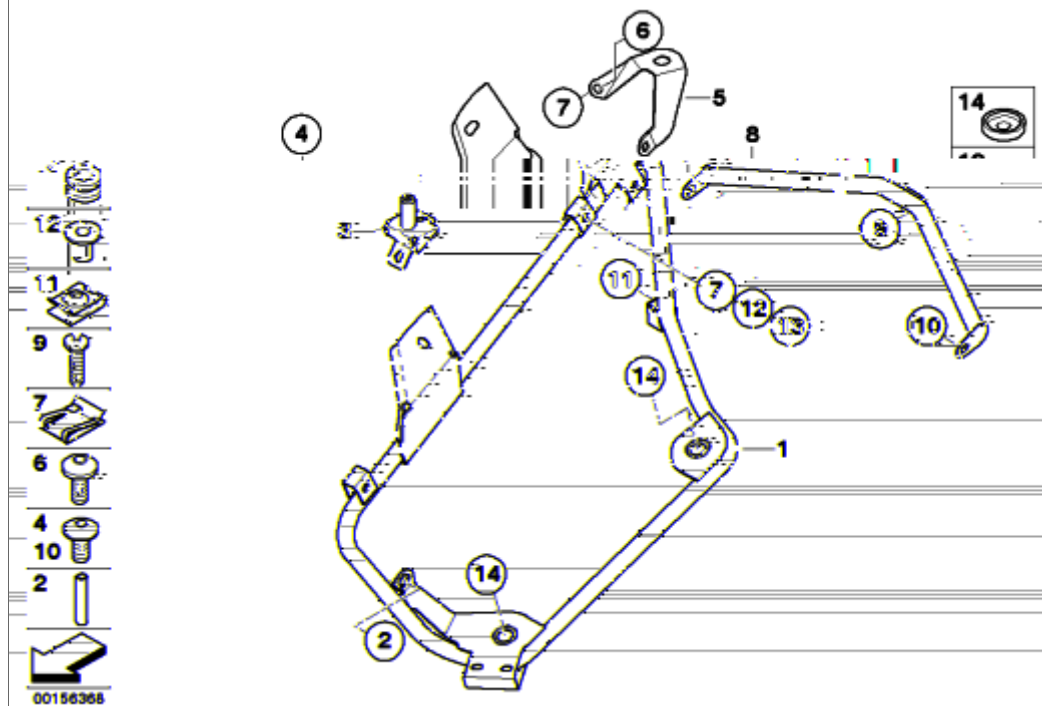
#	Part Number	Description	lb	Qty	Each
01	46517717132	REAR FRAME BLACK	28.66	1	\$1842.06 
--	32712309354	FOIL - L=67MM/B=25MM		X	\$1.78 
02	46517686732	ISA SCREW - M10X40	0.09	2	\$10.19 
03	07129906088	ISA SCREW - M12X50-8.8 ZNS3	0.11	2	\$2.16 
04	07119905620	WASHER - 12-200 HV-A2		2	\$3.58 
05	07129905217	ISA SCREW - M8X55	0.04	1	\$2.00 
06	52537664664	BUMP STOP - H=10		1	\$2.00 
07	07119906132	WASHER - 10-200 HV-A2		2	\$1.93 

## 46\_0929 - MAIN STAND



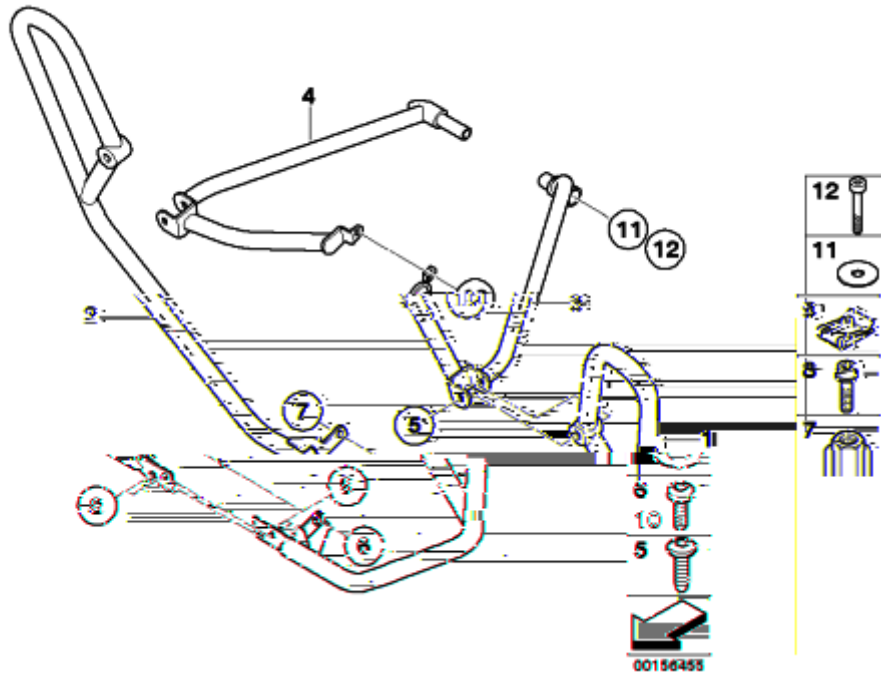
#	Part Number	Description	lb	Qty	Each
01	46527712096	CENTER STAND	3.53	1	\$240.43
01	46527715152	CENTER STAND	3.31	1	NA
02	46522331991	BUSH BEARING	0.02	2	\$5.64
03	46522335616	BUMP STOP - H=20		1	\$3.30
04	46522335325	O-RING		4	\$1.02
05	46522331992	PIVOT PIN	0.07	2	\$10.15
06	07119906134	COUNTERSUNK HEAD SCREW - M10X30MK	0.04	2	\$1.96
07	46527664706	TENSION SPRING - D=10	0.07	1	\$7.57
					
08	46537666528	TENSION SPRING - D=18	0.16	1	\$14.00
					
09	71607653509	SET: SET OF MOUNTING PARTS, TILTING STAND	0.50	1	\$49.75

## 46\_1074 - CASE HOLDER, OFFICIAL VEHICLE



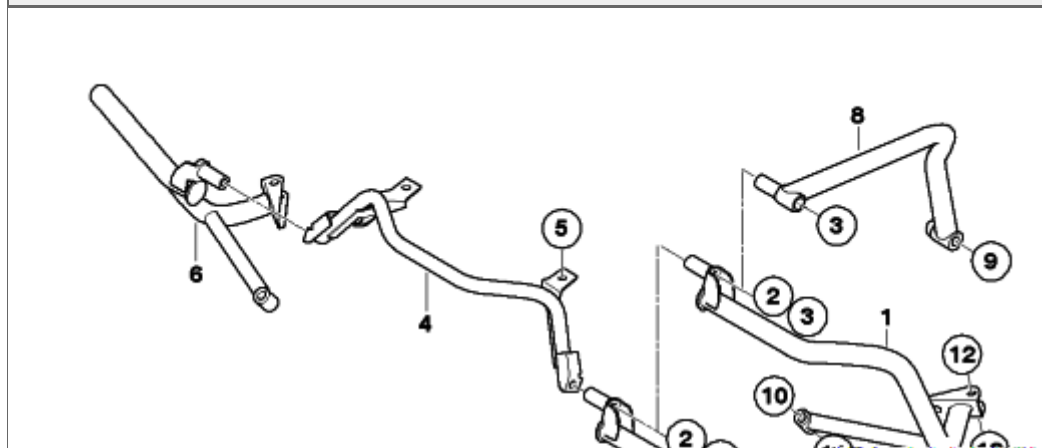
#	Part Number	Description	lb	Qty	Each
01	46547693193	LEFT CASE HOLDER	2.84	1	\$325.95
01	46547693194	RIGHT CASE HOLDER	2.84	1	\$325.95
02	46547700616	BUSH	0.02	2	\$6.08
03	46547693195	ADAPTER	0.13	4	\$36.15
04	46547694305	ISA SCREW - M6X14		8	\$2.69
05	46547694220	BRACKET ANTENNA RADIOTELEPHONE	0.13	1	\$31.69
06	46637659459	OVAL-HEAD SCREW WITH ANTI-ROTATION LOCK - M6X16		2	\$2.00
07	51127070202	CLIP NUT - M6-ZNS3		6	\$1.05
08	46547693196	BRACKET CENTER	0.46	1	\$155.95
09	06327657966	FILLISTER HEAD SCREW - M5X20SI		1	\$0.72
10	06327651211	FILLISTER HEAD SCREW - M5X12		2	\$0.96
11	52532308647	NUT - M5		2	\$1.12
52532308647 was superseded by 52537658638. Superceded part is 46637658638.					
11	46637658638	NUT - M5		2	\$1.12
This is a direct supercession to PN 52532308647.					
12	46547695294	BUSH	0.02	4	\$9.85
13	52512328519	GROMMET	0.01	4	\$2.13
14	52537651036	GROMMET	0.02	4	\$3.67

## 46\_1075 - ENGINE ROLL BAR, AUTHORITY VEHICLES



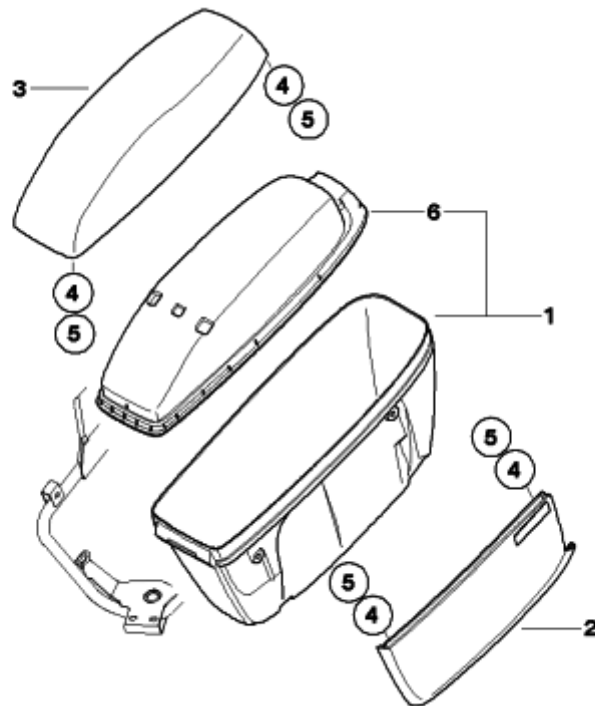
#	Part Number	Description	lb	Qty	Each
01	46637699083	LEFT ENGINE PROTECTION BAR - BEHÖRDE US	3.37	1	\$267.95
	46637699083 was superseded by 46638528815.				
02	46637699084	RIGHT ENGINE PROTECTION BAR - BEHÖRDE US	3.33	1	\$267.95
	46637699084 was superseded by 46638528816.				
03	46637693215	CARRIER	1.50	1	\$212.95
	46637693215 was superseded by 46638528813.				
04	46637693216	CARRIER	1.50	1	\$233.95
	46637693216 was superseded by 46638528814.				
05	46547699810	ISA SCREW - M8X50	0.04	2	\$4.03
06	07129905153	ISA SCREW - M8X85-ZNS3	0.08	1	\$2.69
07	07129906196	SELF-LOCKING HEX NUT - M8-8-ZNNI SI	0.02	1	\$1.64
08	07129904707	ISA SCREW WITH WASHER - M6X18-U1-ZNS3	0.02	2	\$0.98
09	51127070202	CLIP NUT - M6-ZNS3		2	\$1.05
10	07129903749	ISA SCREW - M6X16MM	0.02	2	\$2.00
11	07119904826	WASHER - 8-200		2	\$0.50
12	07129905247	ISA SCREW - M10X80MK	0.13	2	\$3.49


# 46\_1076 - REAR SAFETY BAR



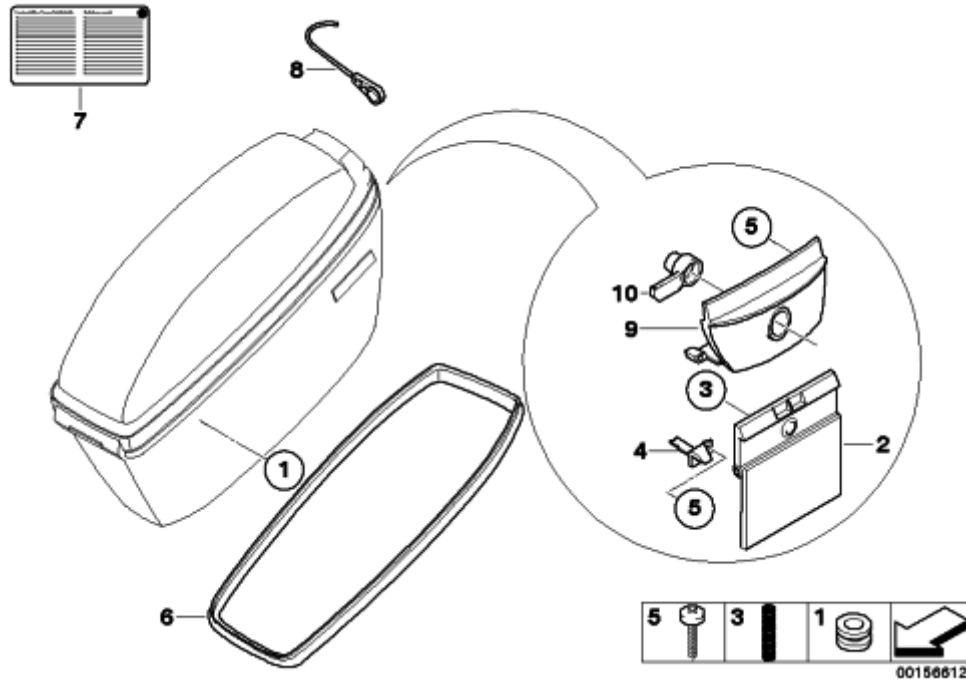
#	Part Number	Description	lb	Qty	Each
01	46547693199	PROTECTION BAR REAR LEFT	1.30	1	\$177.95
02	46547699984	BUSH - L29DI6,4DA16MM	0.09	2	\$10.80
03	07129903721	TORX BOLT - M6X40	0.02	2	\$2.00
04	46547693197	BRACKET CENTER	0.66	1	\$163.95
05	71607699744	FILLISTER HEAD SCREW - M6X20	0.02	2	\$3.86
06	46547693200	PROTECTION BAR REAR RIGHT	1.30	2	\$177.95
07	46547693198	RAISED HANDLE	1.43	1	\$127.95
08	46547694575	RAISED HANDLE	1.43	1	\$164.95
09	07129905217	ISA SCREW - M8X55	0.04	1	\$2.00
10	46717664093	PIN - 8X56,5	0.04	2	\$11.61
11	07119901545	CIRCLIP - 6,0		2	\$0.56
12	46547684770	ISA SCREW - M6X35	0.02	4	\$3.53
13	07129905826	HEX NUT - M6		4	\$1.86


46\_1077 - CASE, OFFICIAL VEHICLE



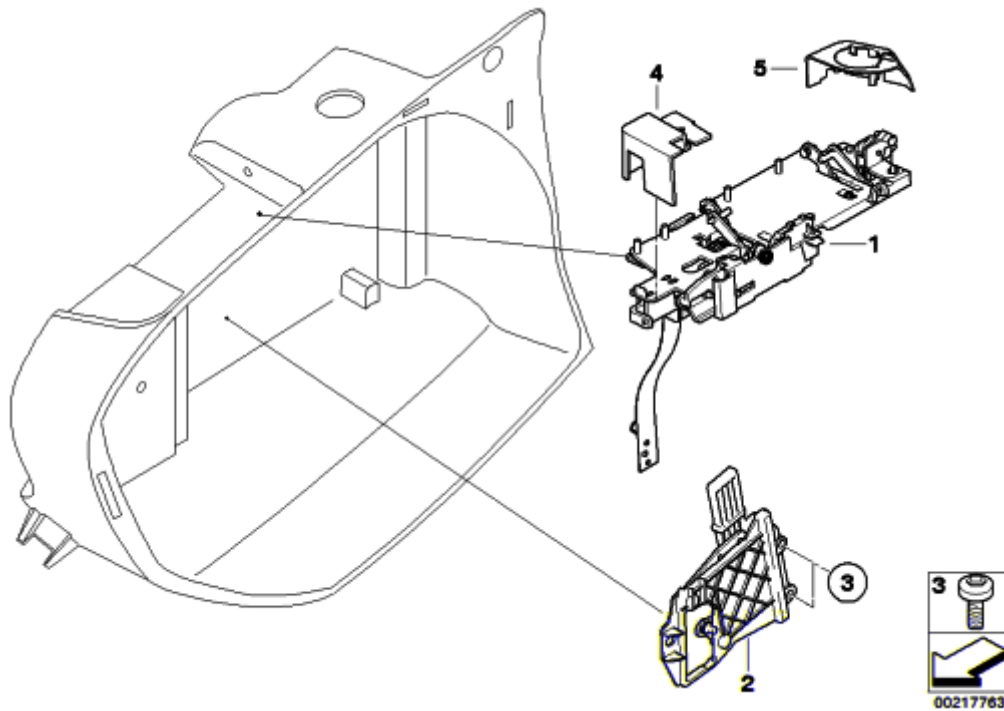
#	Part Number	Description	Lb	Qty	Each
01	46547693165	CASE, OFFICIAL VEHICLE	5.18	2	\$368.95
<div>  <div> 46547693165 was superseded by 46548521824. </div> </div>					
--	71607692098	CATCH - L=410MM	0.02	X	\$10.47
02	46547697891	COVERING LEFT	0.81	1	\$137.95
02	46547697892	COVERING RIGHT	0.83	1	\$137.95
02	46547697893	COVERING LEFT	0.79	1	\$137.95
02	46547697894	COVERING RIGHT	0.79	1	\$137.95
03	46547697905	FINISHER UPPER	1.32	1	\$167.95
03	46547697906	FINISHER UPPER	1.19	1	\$167.95
04	46637651465	PLUG-IN NUT - M5		7	\$1.29
05	06327651211	FILLISTER HEAD SCREW - M5X12		7	\$0.96
06	46547693171	COVER LEFT/RIGHT AUTHORITIES	2.18	1	\$140.95
--	46547683006	AXLE	0.02	1	\$13.00
--	07119905594	CIRCLIP		2	\$1.42

## 46\_1078 - CASE, OFFICIAL VEHICLE, SINGLE PARTS



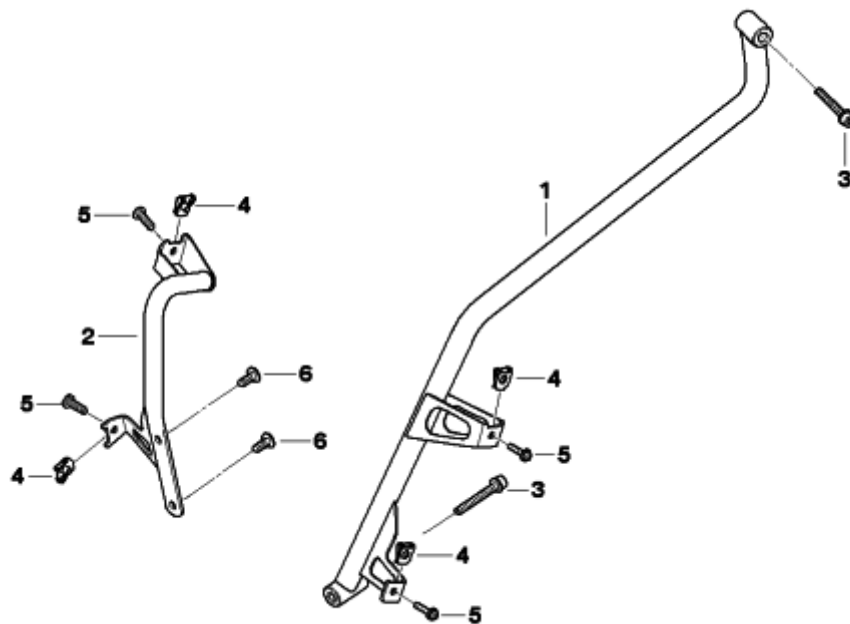
#	Part Number	Description	lb	Qty	Each
01	52512328519	GROMMET	0.01	4	\$2.13
02	46547683003	RECESSED HANDLE	0.07	1	\$14.25
03	46547684947	SPRING		1	NA
04	46547710444	SET OF AXLE PINCH BOLT CASES	0.02	1	\$8.25
05	64118390866	TORX-BOLT FOR PLASTIC MATERIAL		4	NA
64118390866 was superseded by 64117659479.					
05	46637659479	FILLISTER HEAD SCREW WITH COLLAR - M4X14		4	\$1.20
06	46547683005	GASKET, CASE LID	0.20	1	\$19.61
07	51147682213	INSTRUCTION NOTICE, PAYLOAD	0.01	1	\$8.36
08	71607692098	CATCH - L=410MM	0.02	1	\$10.47
--	46547693165	CASE, OFFICIAL VEHICLE	5.18	X	\$368.95
<div>  <div> 46547693165 was superseded by 46548521824. </div> </div>					
08	46548521822	CATCH - L=300MM		1	NA
09	46547683007	LOCK COVERING	0.07	1	NA


46\_1146 - CASE, LOWER PART



#	Part Number	Description	lb	Qty	Each
01	<b>46547685871</b>	LOCKING MECHANISM, TOP - LEFT	1.34	1	NA
	46547685871 was superseded by 46547714417.				
01	<b>71607685872</b>	LOCKING MECHANISM, TOP - RIGHT	1.34	1	NA
	71607685872 was superseded by 71607714418.				
--	<b>46547683296</b>	WASHER-GASKET		X	\$1.90
--	<b>46547694877</b>	FILLISTER HEAD SCREW - K50X16		X	\$2.09
02	<b>46547700935</b>	LOCKING MECHANISM, BOTTOM - LEFT	0.30	1	\$33.75
02	<b>46547700936</b>	LOCKING MECHANISM, BOTTOM - RIGHT	0.30	1	\$33.75
--	<b>46547683296</b>	WASHER-GASKET		X	\$1.90
--	<b>46547694877</b>	FILLISTER HEAD SCREW - K50X16		X	\$2.09
03	<b>52537654255</b>	SCREW - 4X12		8	\$1.86
04	<b>46547720295</b>	CAP, FRONT LEFT	0.03	1	NA
04	<b>46547720296</b>	CAP, FRONT RIGHT	0.03	1	NA
05	<b>46547720297</b>	CAP FOR LOCK, LEFT	0.05	1	NA
05	<b>46547720298</b>	CAP FOR LOCK, RIGHT	0.05	1	NA

## 46\_1220 - ENGINE SPOILER MOUNTING PARTS



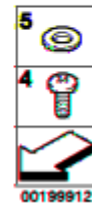
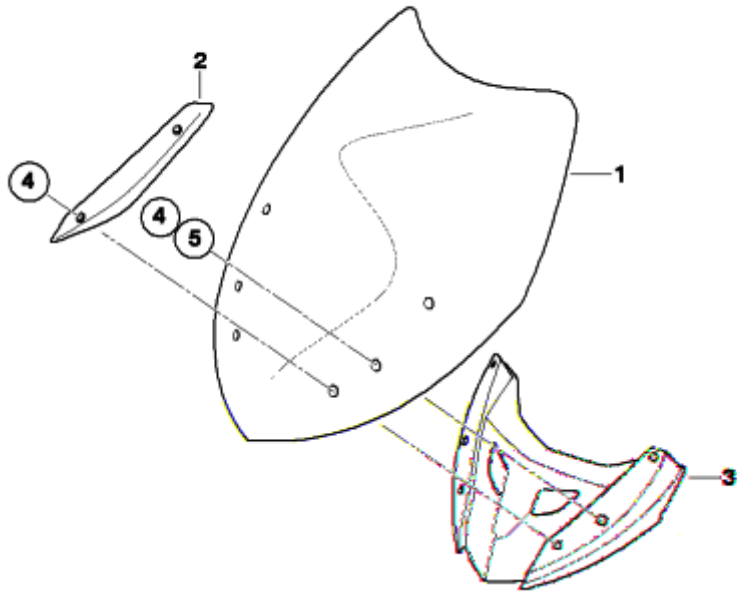
#	Part Number	Description	lb	Qty	Each
01	46637711657	BRACKET RIGHT	1.20	1	\$90.91
02	46637717209	BRACKET LEFT	0.39	1	NA
03	07129905960	ISA SCREW WITH WASHER - M6X45	0.02	2	NA
04	46637658638	NUT - M5		5	\$1.12
This is a direct supercession to PN 52532308647.					
05	06327651212	BINDING HEAD SCREW - M5X16 SI		4	\$0.80
					
06	46637659459	OVAL-HEAD SCREW WITH ANTI-ROTATION LOCK - M6X16		2	\$2.00


46\_1222 - MIRROR COVERS



#	Part Number	Description	lb	Qty	Each
01	46637724159	MIRROR COVER, LEFT	0.33	1	\$136.32
01	46637724160	MIRROR COVER, RIGHT	0.33	1	\$136.32
01	46637724157	MIRROR COVER, LEFT	0.33	1	NA
01	46637724158	MIRROR COVER, RIGHT	0.33	1	\$136.32
01	46637724155	MIRROR COVER, LEFT	0.33	1	NA
01	46637724156	MIRROR COVER, RIGHT	0.33	1	\$136.32

46\_1223 - WINDSHIELD



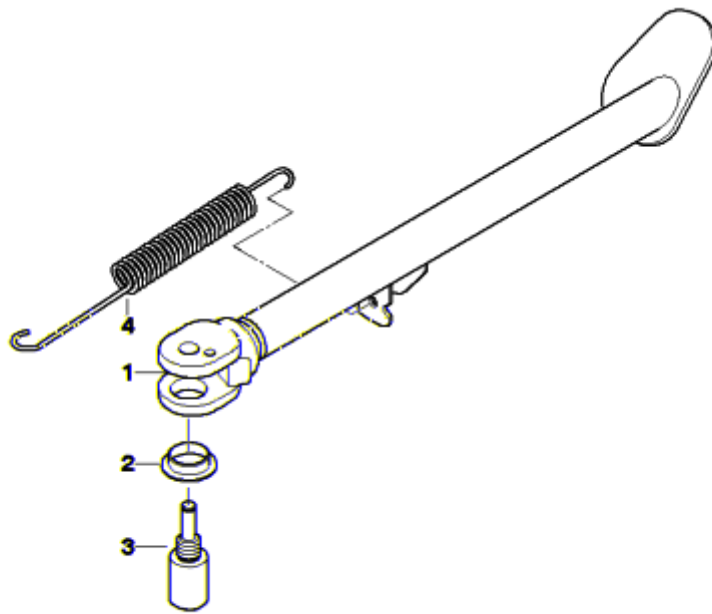
#	Part Number	Description	lb	Qty	Each
01	46637711658	WINDSHIELD - L=620MM	3.57	1	\$428.51
02	46637681295	COVERING LEFT	0.09	1	\$17.68
02	46637681296	COVERING RIGHT	0.09	1	\$17.68
03	46637711659	MOUNTING FRAME	0.97	1	\$72.67
04	06327651212	BINDING HEAD SCREW - M5X16 SI		6	\$0.80
					
05	46637714242	WASHER		2	\$0.60

46\_1256 - FAIRING SIDE SECTION, FRONT



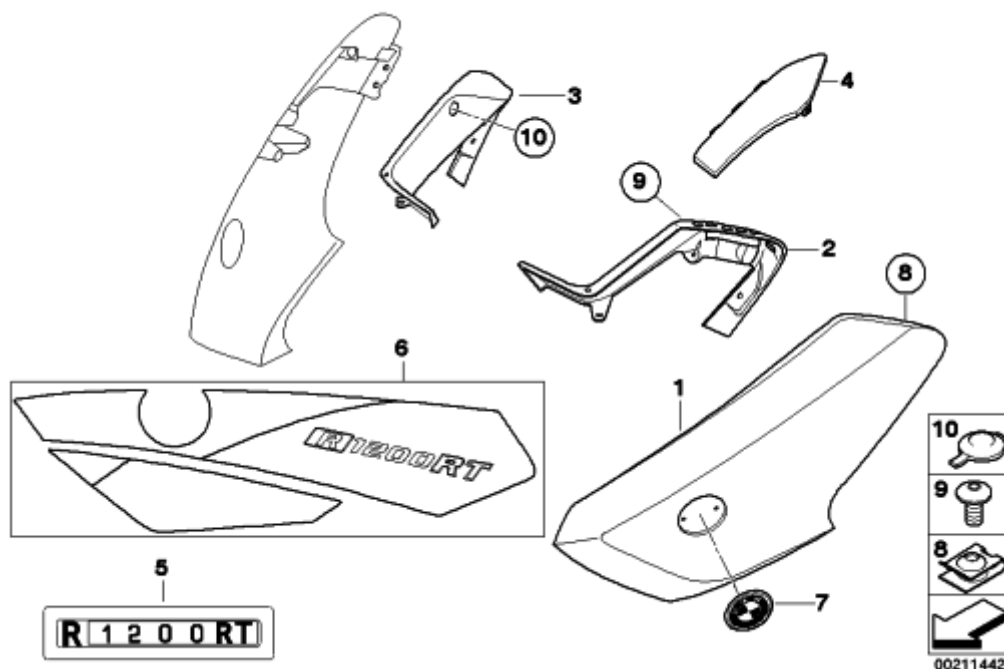
#	Part Number	Description	lb	Qty	Each
01	46637724163	LATERAL TRIM PANEL FRONT LEFT	1.68	1	NA
01	46637724164	LATERAL TRIM PANEL FRONT RIGHT	1.68	1	\$490.51
01	46637724175	LATERAL TRIM PANEL FRONT LEFT	1.68	1	NA
01	46637724176	LATERAL TRIM PANEL FRONT RIGHT	1.68	1	\$426.52
01	46637724173				


## 46\_1257 - SIDE STAND



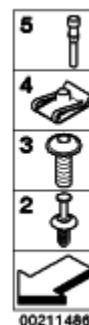
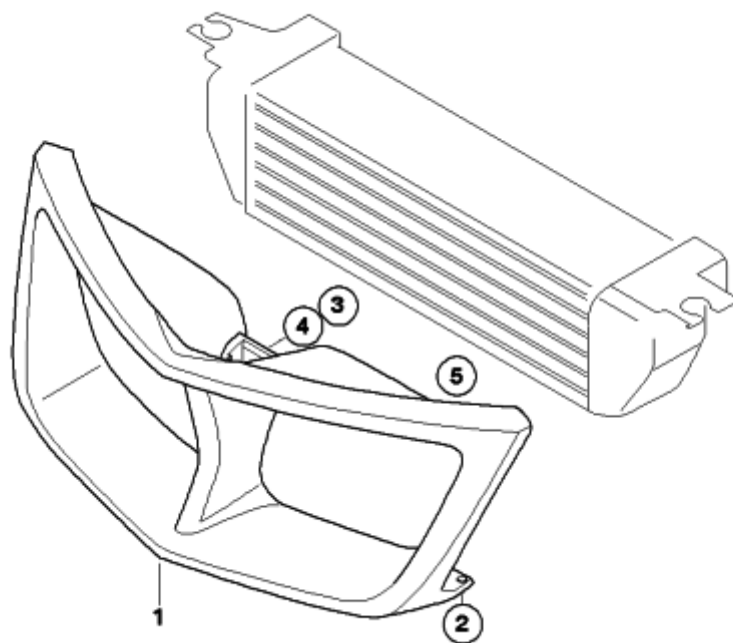
#	Part Number	Description	lb	Qty	Each
01	<b>46537675689</b>	SIDE STAND	1.17	1	\$146.81
--	<b>52537664664</b>	BUMP STOP - H=10		X	\$2.00
01	<b>46537711886</b>	SIDE BRACE, SHORT	1.17	1	\$146.81
--	<b>52537664664</b>	BUMP STOP - H=10		X	\$2.00
02	<b>46537679105</b>	COLLAR BUSH		2	\$10.93
					
03	<b>46537707216</b>	SIDE-SUPPORT SCREW - M10X1	0.09	1	\$17.95
04	<b>46537681031</b>	TENSION SPRING	0.07	1	\$15.30

## 46\_1258 - FAIRING SIDE SECTION, FRONT



#	Part Number	Description	lb	Qty	Each
01	46637724173	LATERAL TRIM PANEL FRONT LEFT	1.68	1	NA
01	46637724174	LATERAL TRIM PANEL FRONT RIGHT	1.68	1	\$426.52
01	46637724175	LATERAL TRIM PANEL FRONT LEFT	1.68	1	NA
01	46637724176	LATERAL TRIM PANEL FRONT RIGHT	1.68	1	\$426.52
01	46637724171	LATERAL TRIM PANEL FRONT LEFT	1.68	1	\$426.52
01	46637724172	LATERAL TRIM PANEL FRONT RIGHT	1.68	1	\$426.52
01	46637724163	LATERAL TRIM PANEL FRONT LEFT	1.68	1	NA
01	46637724164	LATERAL TRIM PANEL FRONT RIGHT	1.68	1	\$490.51
02	46637682933	LATERAL TRIM PANEL, INTERIOR LEFT	0.37	1	\$42.15
03	46637682934	LATERAL TRIM PANEL, INTERIOR RIGHT	0.40	1	\$42.15
04	46637705237	MOULDING RADIO CUT-OUT	0.04	1	\$10.73
05	46637724181	EMBLEM SAPHIRSCHW-GRANITGR. LEFT		1	\$44.45
05	46637724182	EMBLEM SAPHIRSCHW-GRANITGR. RIGHT		1	\$44.45
05	46637724183	EMBLEM SILVER-BLACK-MATT LEFT		1	NA
05	46637724184	EMBLEM SILVER-BLACK-MATT RIGHT		1	NA
05	46637724179	EMBLEM TITANSI-GRANITGRAY. LEFT		1	\$44.45
05	46637724180	EMBLEM TITANSI-GRANITGRAY. RIGHT		1	\$44.45
06	46637724177	EMBLEM SILVER-GRANIT-THUNDER LEFT	0.02	1	\$82.75
06	46637724178	EMBLEM SILVER-GRANIT-THUNDER RIGHT	0.02	1	\$82.75
07	51147721222	BADGE - D=70MM	0.04	1	\$25.18
08	46637658638	NUT - M5		8	\$1.12
This is a direct supercession to PN 52532308647.					
09	06327651212	BINDING HEAD SCREW - M5X16 SI		10	\$0.80
					
10	46637686542	STOP BUFFER		1	\$8.36

46\_1259 - AIR DUCT, OIL COOLER



#	Part Number	Description	lb	Qty	Each
01	46637711662	AIR DUCT, OIL COOLER	0.55	1	\$39.66
02	51111908077	EXPANDING RIVET		2	\$0.50
03	06327657966	FILLISTER HEAD SCREW - M5X20SI		2	\$0.72
04	46637651465	PLUG-IN NUT - M5		2	\$1.29
05	46632309923	BUMP STOP - H=5,5MM		2	\$2.00



**46\_1260 - TRIM PANEL UPPER PART**

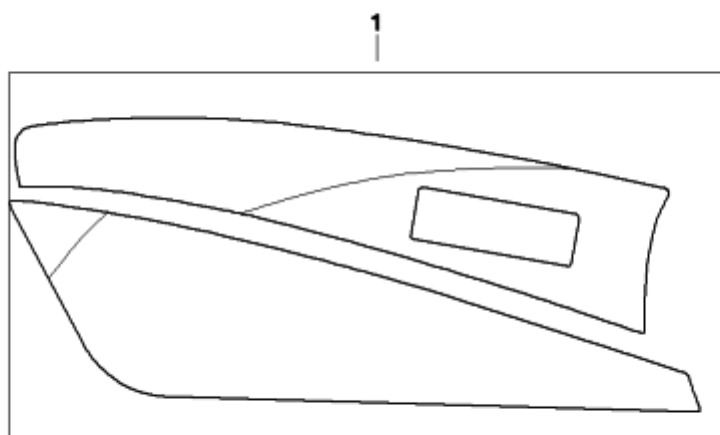
#	Part Number	Description	lb	Qty	Each
01	<b>46637682929</b>	TRIM PANEL UPPER PART	3.04	1	\$190.21
01	<b>46637689020</b>	TRIM PANEL UPPER PART	3.11	1	\$254.67
--	<b>46637690869</b>	FAN SHROUD	0.40	X	\$26.85
--	<b>46637693211</b>	ROD RIGHT - BEHÖRDE	0.75	X	\$58.46
02	<b>46627652556</b>	FILLISTER HEAD SCREW - M6X25	0.02	4	\$2.33
03	<b>07146977329</b>	WASHER - 6,4 ZNS3	0.02	4	\$0.98
	<b>46631451278</b>	INSERT		2	\$0.60
05	<b>46631451277</b>	GROMMET		4	\$1.54

46\_1261 - ENGINE SPOILER



#	Part Number	Description	lb	Qty	Each
01	46637724153	ENGINE SPOILER LEFT	2.76	1	\$340.83
01	46637724154	ENGINE SPOILER RIGHT	2.73	1	\$340.83
	46637724151	ENGINE SPOILER LEFT	2.76	1	\$340.83

46\_1307 - DESIGN STICKER FOR CASE



#	Part Number	Description	lb	Qty	Each
01	46547724239	DESIGN DECAL, LUGGAGE CASE, LEFT	0.01	1	\$70.36
01	46547724240	DESIGN DECAL, LUGGAGE CASE, RIGHT	0.01	1	\$70.36