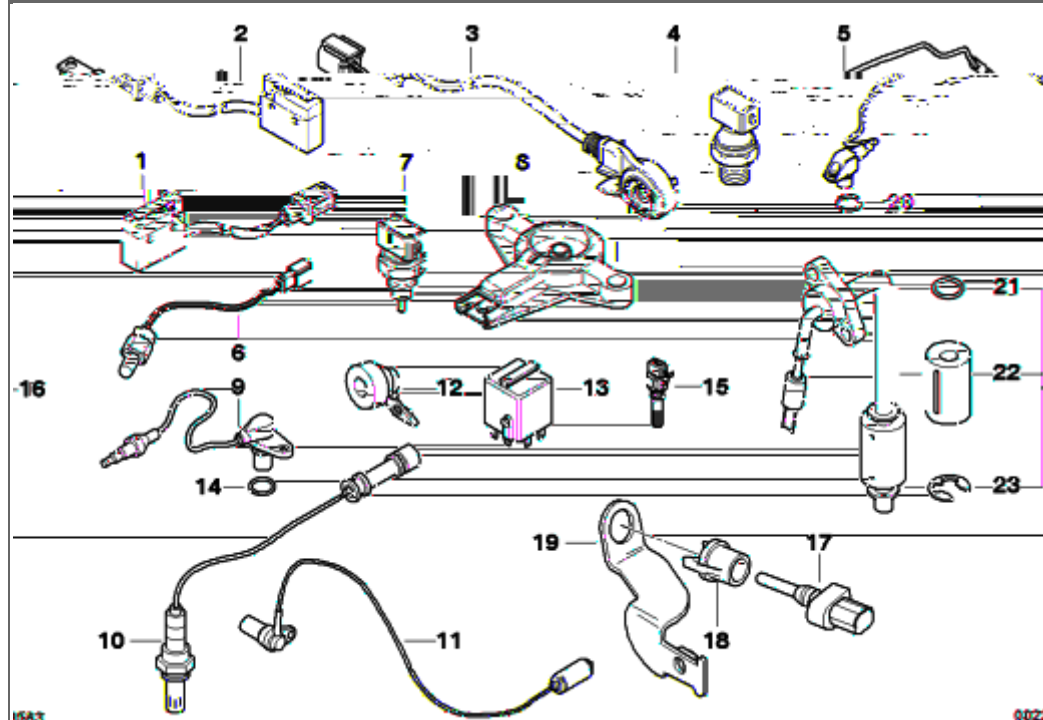




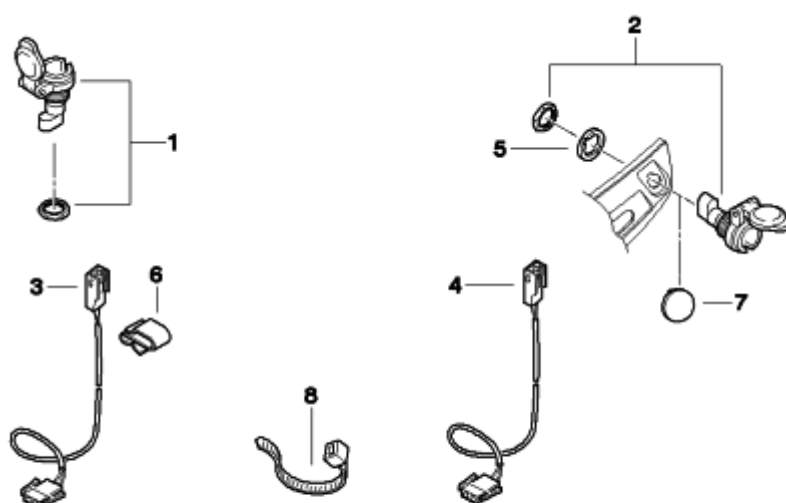


61_1882 - SWITCH / SENSORS



#	Part Number	Description	lb	Qty	Each
03	61317654603	SWITCH, KICKSTAND - L=530MM	0.15	1	\$113.48
					
--	07119903479	LOCK RING - 6X0,7		1	\$0.56
 <p>Price is based on a quantity of ONE.</p>					
--	07119904427	WASHER - 6-200		1	\$0.50
					
04	12617686501	OIL PRESSURE SWITCH - 0,15 BAR	0.09	1	\$16.25
06	12627673407	TEMPERATURE SENSOR WITH CABLE	0.07	1	\$59.38
07	11117672505	TEMPERATURE SENSOR	0.04	1	\$25.85
09	12727707899	CAMSHAFT SPEED SENSOR	0.15	1	\$79.29
--	07129903978	TORX SCREW - M6X16MM ZNS3	0.02	1	\$0.71
13	61367709257	MINI-RELAY, NO CONTACT, GRAY	0.04	1	\$17.48
					
20	12727694011	O-RING - 14X2		1	\$2.47

61_1952 - SOCKETS



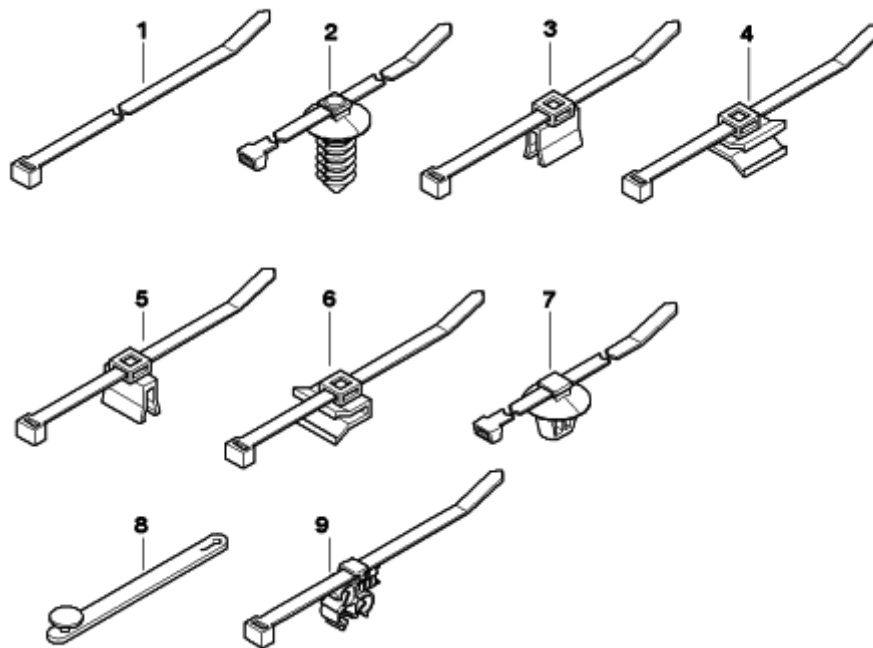
#	Part Number	Description	lb	Qty	Each
01	61347694306	PLUG-IN SOCKET	0.07	1	\$37.75
03	61127701299	CONNECTION CABLE, SOCKET	0.02	1	\$22.52
04	61127701299	CONNECTION CABLE, SOCKET	0.02	1	\$22.52
05	61347701565	ADAPTER RING		1	\$2.73
06	12521437136	CLIP		1	\$0.68
07	12131459529	PLUG		1	\$0.60
08	61131367599	CABLE STRAP - L=200MM/B=3,6MM		10	\$0.50

61_2048 - VARIOUS CABLE HOLDERS
--

--

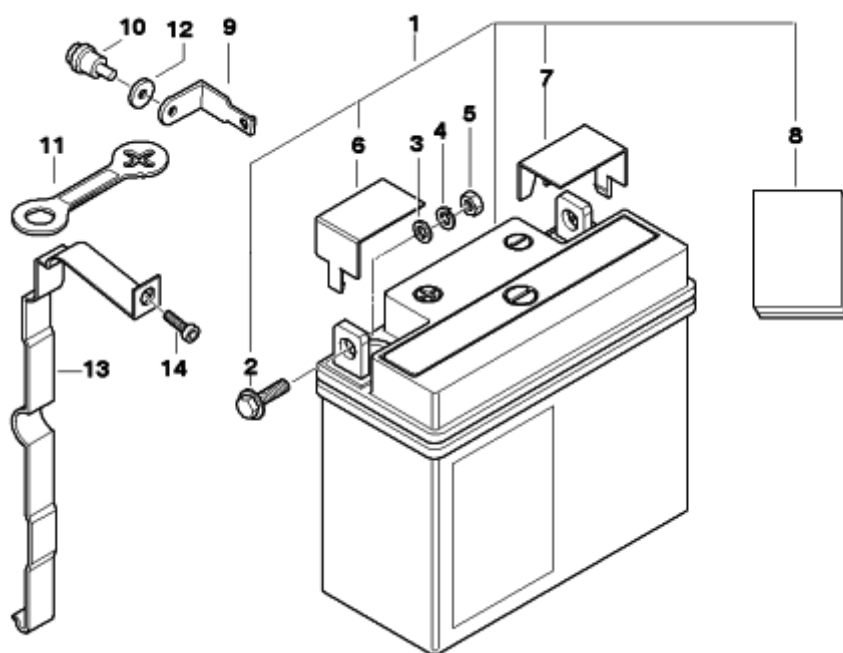
#	Part Number	Description	lb	Qty	Each
04	61131378964	BRACKET, PLUG CONNECTION BLACK		X	\$0.82
05	61131390483	BRACKET, PLUG CONNECTION BROWN		X	\$1.70
06	61131378997	BRACKET, PLUG CONNECTION WHITE		X	\$0.85
06	61138365536	BRACKET, PLUG CONNECTION GRAY			

61_2049 - CABLE STRAP



#	Part Number	Description	lb	Qty	Each
02	61136915974	CABLE STRAP WITH BRACKET - Ø=6,9 / L=150		X	\$0.85
06	34327708473	CLAMP - ABS		2	\$2.00
07	61138383639	CABLE STRAP WITH BRACKET - Ø=6,5/L=300MM	0.01	2	\$0.85

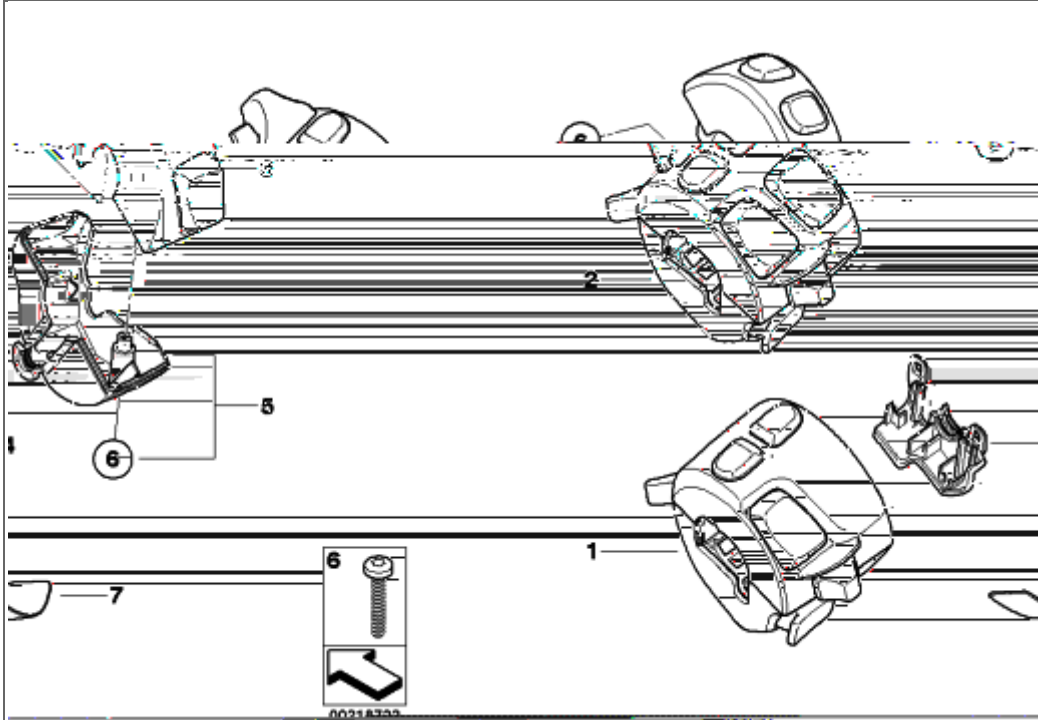
61_2311 - BATTERY, MAINTENANCE-FREE



00155224

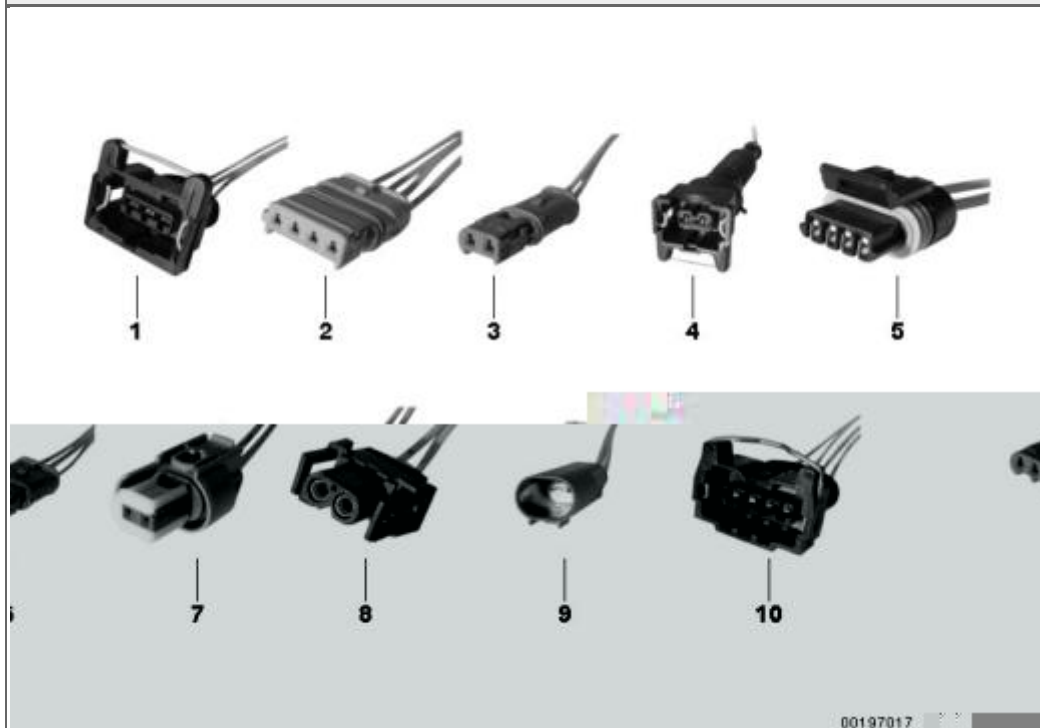
#	Part Number	Description	Lb	Qty	Each
01	61212346800	BATTERY, MAINTENANCE-FREE - 12V 19AH	13.67	1	\$179.99
		Ground shipments only!			
01	61212346800	BATTERY, MAINTENANCE-FREE - 12V 19AH	13.67	1	\$179.99
		Ground shipments only!			
02	61211459655	HEX BOLT - M6X20	0.01	2	\$2.00
03	61211459657	WASHER - A6,4		2	\$0.58
04	61211459658	SPRING WASHER - B6		2	\$0.56
05	61211459656	HEX NUT - M6		2	\$2.05
06	61211459098	COVERING CAP	0.01	1	\$2.00
07	61211459099	COVERING CAP	0.01	1	\$2.00
08	01402306238	INSTRUCTIONS, MAINTENANCE-FREE BATTERY	0.03	1	NA
13	61217683700	SUPPORT	0.07	1	NA
	61217683700 was superseded by 61217728247.				
13	61217728247	BATTERY SUPPORT	0.07	1	\$17.00
14	06327651212	BINDING HEAD SCREW - M5X16 SI		1	\$0.80
					


61_2473 - COMBINATION SWITCH AT HANDLEBAR



#	Part Number	Description	lb	Qty	Each
01	61317725737	COMBINATION SWITCH LEFT	0.18	1	\$122.28
01	61317725733	COMBINATION SWITCH LEFT	0.18	1	\$122.28
01	61317725743	COMBINATION SWITCH LEFT	0.18	1	\$122.28
01	61317725731	COMBINATION SWITCH LEFT	0.15	1	\$122.28
02	61317725741	COMBINATION SWITCH LEFT	0.26	1	\$122.28
02	61317725735	COMBINATION SWITCH LEFT	0.26	1	\$122.28
02	61317725739	COMBINATION SWITCH LEFT	0.26	1	\$122.28
02	61317725745	COMBINATION SWITCH LEFT	0.26	1	\$122.28
03	61317725688	COMBINATION SWITCH RIGHT	0.07	1	\$122.28
03	61317725696	COMBINATION SWITCH RIGHT	0.09	1	\$122.28
03	61317725692	COMBINATION SWITCH RIGHT	0.07	1	\$122.28
04	61317708253	COVER LEFT		1	NA
04	61317708221	COVER LEFT		1	\$2.64
05	61317708231	COVER RIGHT	0.02	1	\$3.02
06	61317683119	FLANGED CAP SCREW - 2,5X15		2	\$0.56
07	46542315901	FOIL		1	\$2.56

61_2484 - REPLACEMENT CABLE F MAIN CABLE HARNESS



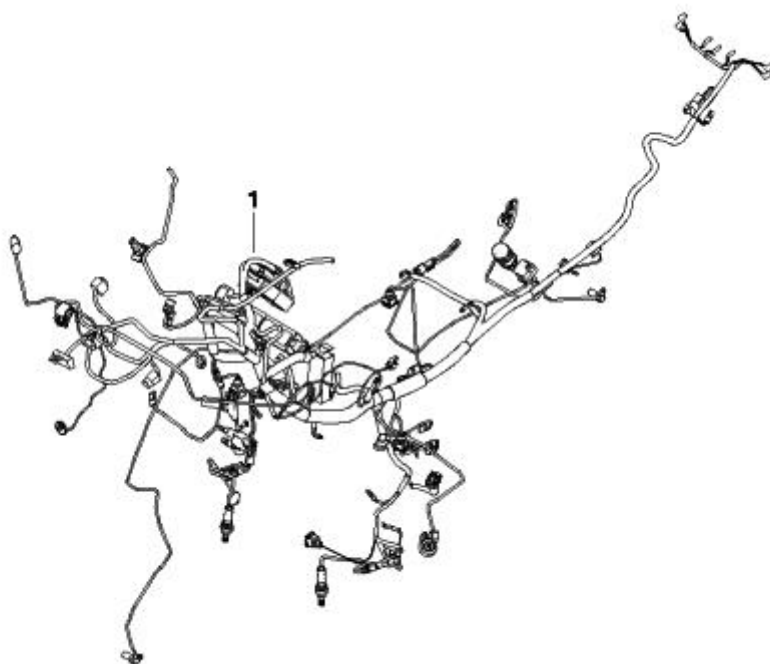
#	Part Number	Description	lb	Qty	Each
01	83300402336	REPAIR PLUG, 3-PIN - NO. 610611	0.04	1	\$15.31
02	83300402337	REPAIR PLUG, 4-PIN - NO. 610612	0.05	1	\$39.71
03	83300402338	REPAIR PLUG, 2-PIN - NO. 610613	0.02	1	\$35.04
04	83300402339	REPAIR PLUG, 2-PIN - NO. 610614	0.04	1	\$18.24
					
05	83300402340	REPAIR PLUG, 4-PIN - NO. 610615	0.04	1	\$16.60
06	83300402341	REPAIR PLUG, 3-PIN - NO. 610616		1	\$18.17
07	83300402342	REPAIR PLUG, 2-PIN - NO. 610617	0.04	1	\$15.25
08	83300402343	REPAIR PLUG, 2-PIN - NO. 610618	0.04	1	\$11.55
09	83300402344	REPAIR PLUG, 2-PIN - NO. 610619	0.02	1	\$16.12
10	83300409690	REPAIR PLUG, 4-PIN - NO. 610621		1	\$23.21

61_2485 - REPLACEMENT CABLE F MAIN CABLE HARNESS


00216465

#	Part Number	Description	lb	Qty	Each
01	83300413580	REPAIR PLUG, 8-POLE / 3-POLE - NO. 611651		1	\$33.14
02	83300413581	REPAIR PLUG, 8-PIN - NO. 611652	0.08	1	\$21.07
03	83300413582	REPAIR PLUG, 3-PIN - NO. 611653	0.03	1	\$22.49
04	83300413583	REPAIR PLUG, 4-PIN - NO. 611654	0.03	1	\$16.44
05	83300413584	REPAIR PLUG, 4-PIN - NO. 611655	0.04	1	\$17.76
06	83300413585	REPAIR PLUG, 3-PIN - NO. 611656	0.03	1	\$15.58
Can-bus plug that allows you to splice to a GPS power cord and connect to switched power on your Can-bus model. MIDDLE NOT USED, RH WIRE IS POWER, LH WIRE IS GROUND.					
07	83300413586	REPAIR PLUG, 3-PIN - NO. 611657	0.02	1	\$15.87
08	83300444440	REPAIR PLUG, 2-PIN - NO. 610622	0.06	1	\$34.45

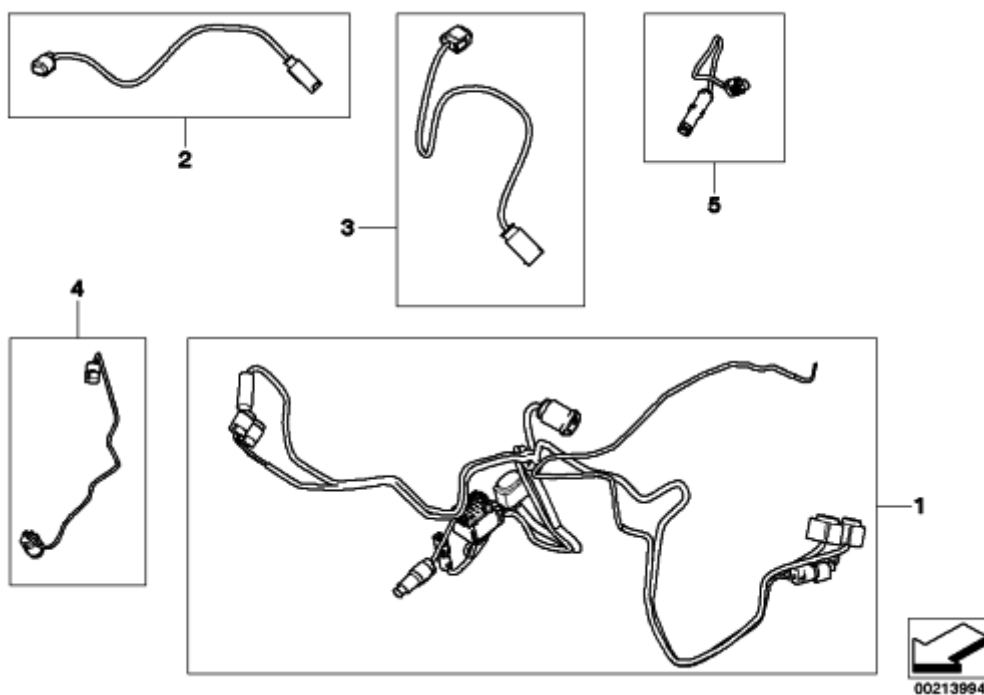
61_2625 - MAIN WIRING HARNESS



00213992

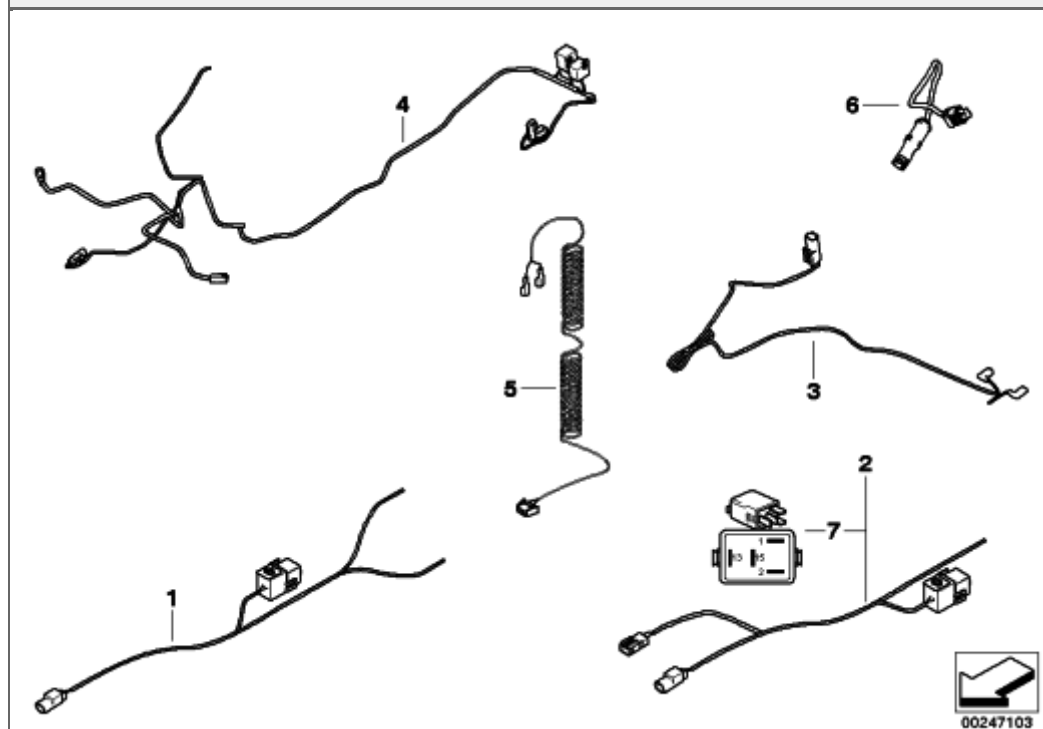
#	Part Number	Description	lb	Qty	Each
01	61117723889	MAIN WIRING HARNESS (to 07/10)	10.08	1	NA
01	61117722842	MAIN WIRING HARNESS (to 07/10)	7.03	1	\$1610.60
01	61117722840	MAIN WIRING HARNESS (to 07/10)	6.72	1	NA
01	61117722841	MAIN WIRING HARNESS (to 07/10)	6.66	1	NA
01	61117728032	MAIN WIRING HARNESS (from 07/10)	9.99	1	NA
01	61117728029	MAIN WIRING HARNESS (from 07/10)	6.33	1	NA
01	61117728028	MAIN WIRING HARNESS (from 07/10)	6.42	1	NA
01	61117728030	MAIN WIRING HARNESS (from 07/10)	6.64	1	NA
01	61117722839	MAIN WIRING HARNESS (to 07/10)	6.35	1	NA
01	61117728027	MAIN WIRING HARNESS (from 07/10)	6.08	1	NA

61_2627 - VARIOUS WIRING HARNESSES



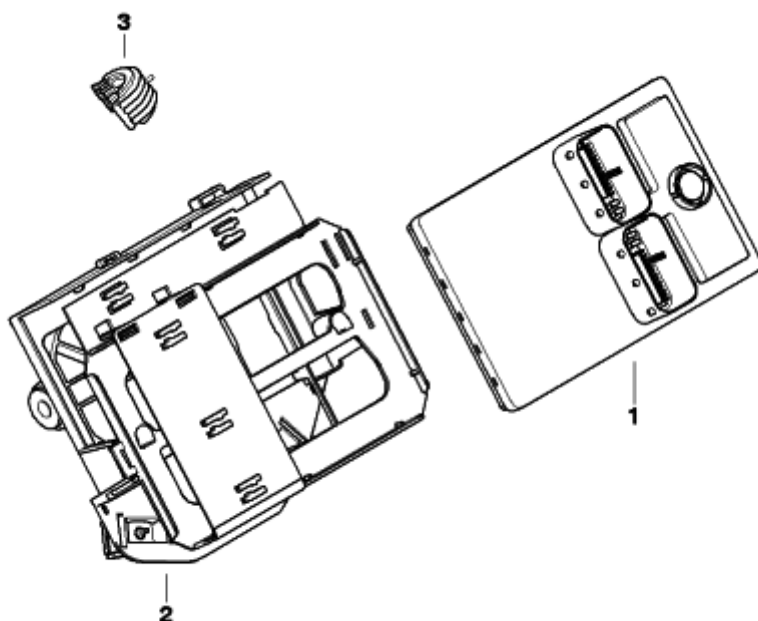
#	Part Number	Description	lb	Qty	Each
01	61127722844	WIRING HARNESS FOR AUDIO SYSTEM	0.73	1	\$366.20
04	61127699643	ADAPTER LEAD FOR TEMPERATURE SENSOR	0.15	1	\$35.60
05	61127701299	CONNECTION CABLE, SOCKET	0.02	1	\$22.52
05	61127701299	CONNECTION CABLE, SOCKET	0.02	1	\$22.52

61_2628 - VARIOUS WIRING HARNESS, OFFICIAL VEHICLE



#	Part Number	Description	lb	Qty	Each
01	61127727999	WIRING HARNESS, HAZARD WARNING SYSTEM	0.95	1	NA
03	61127696505	WIRE, REAR FOG LAMP	0.07	1	\$41.14
04	61127727995	WIRING OFFICIAL SIGNAL LIGHT	0.75	1	NA
05	61112317385	LEAD FOR PRIORITY-VEHICLE LIGHT CABLE	0.51	1	\$290.12
06	61127701299	CONNECTION CABLE, SOCKET	0.02	1	\$22.52

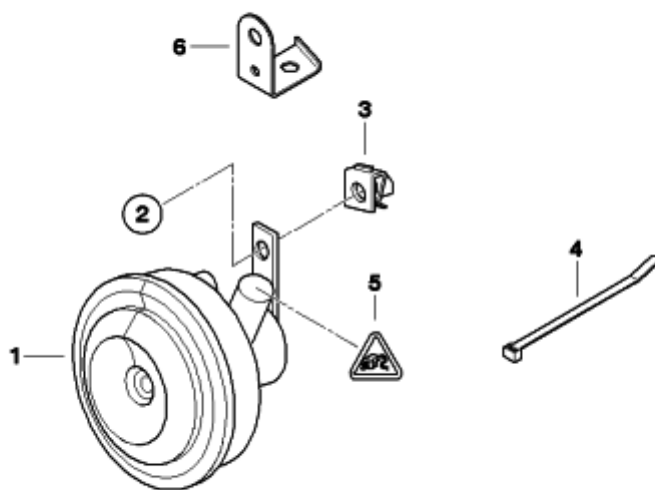
61_2630 - CENTRAL VEHICLE ELECTRONICS



00253964

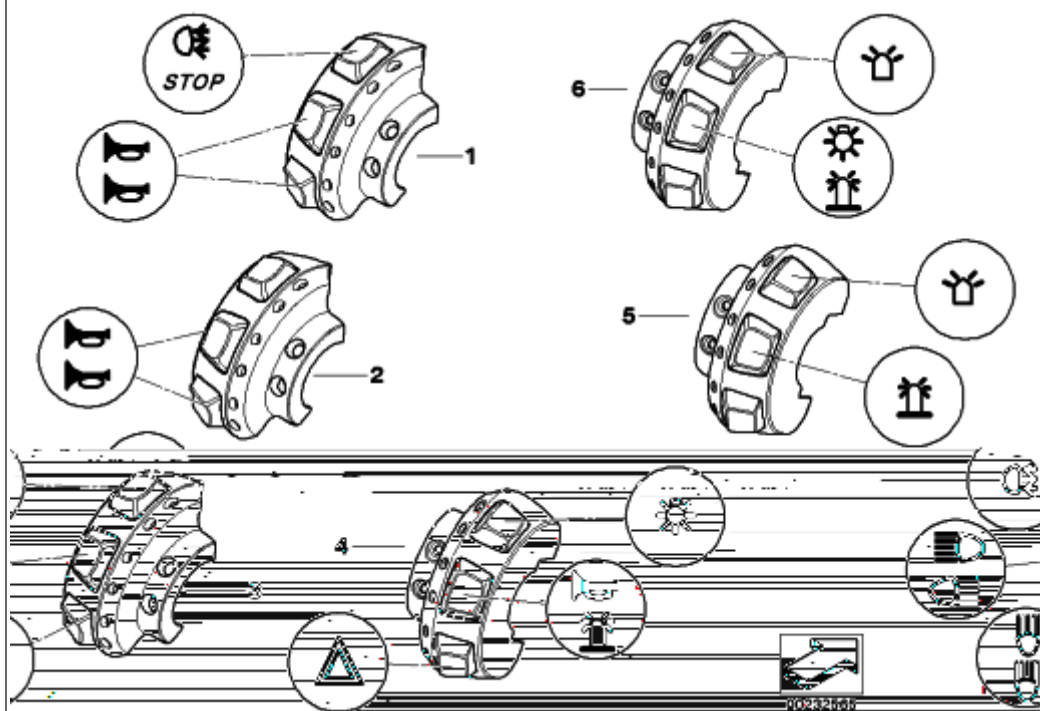
#	Part Number	Description	lb	Qty	Each
01	61357720229	CENTRAL VEHICLE ELECTRONICS - HIGH D8 47.0	1.26	1	NA
	61357720229 was superseded by 61357722244.				
01	61357722244	CENTRAL VEHICLE ELECTRONICS	1.23	1	NA
	61357722244 was superseded by 61358521878.				
01	61358521878	CENTRAL VEHICLE ELECTRONICS	1.26	1	\$742.20
01	61357720228	CENTRAL VEHICLE ELECTRONICS - HIGH D7 47.0	1.26	1	NA
	61357720228 was superseded by 61357722243.				
01	61358520262	CENTRAL VEHICLE ELECTRONICS	1.26	1	NA
	61358520262 was superseded by 61358521877.				
01	61358521877	CENTRAL VEHICLE ELECTRONICS	1.26	1	\$645.29
02	61357713858	BRACKET, CONTROL UNIT	0.33	1	\$39.61
03	61357684643	CLAMP	0.02	2	NA

61_2694 - HORN



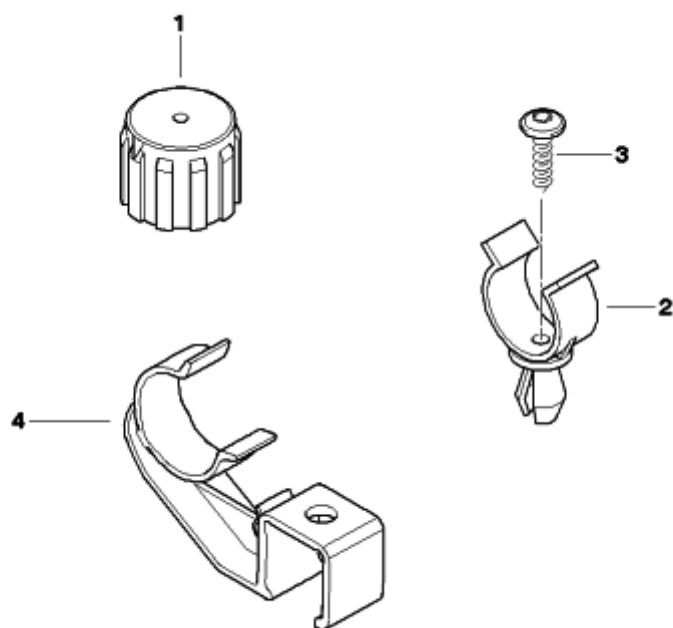
#	Part Number	Description	lb	Qty	Each
01	61332346554	HORN	0.55	1	\$40.00
02	46717675209	ISA SCREW - M8X20	0.02	1	\$1.80
03	61332346555	PLUG-IN NUT - M8-ZNS	0.02	1	\$1.29
04	61131367599	CABLE STRAP - L=200MM/B=3,6MM		1	\$0.50
05	61138365340	UNIVERSAL SOCKET HOUSING UNCODED - 2 POL.		1	\$3.12
--	61130005199	BUSHING CONTACT - 0,2- 0,5MM²	0.01	2	\$1.97
--	61130006665	BUSHING CONTACT - 0,75MM²	0.01	2	\$2.03

61_2749 - AUXILIARY SWITCH, OFFICIAL VEHICLE



#	Part Number	Description	lb	Qty	Each
01	61317722101	AUXILIARY SWITCH, LEFT	0.15	1	NA
02	61317722103	AUXILIARY SWITCH, LEFT	0.15	1	NA
05	61317722104	AUXILIARY SWITCH, RIGHT	0.15	1	NA
06	61317722114	AUXILIARY SWITCH, RIGHT	0.15	1	NA
07	07129904838	ISA SCREW - M4X8-8.8		4	\$1.80
08	46542315901	FOIL		1	\$2.56

61_2781 - CAP FOR DIAGNOSIS PLUG



00245463

#	Part Number	Description	lb	Qty	Each
01	61132306793	CAP FOR DIAGNOSIS PLUG	0.02	1	\$8.53