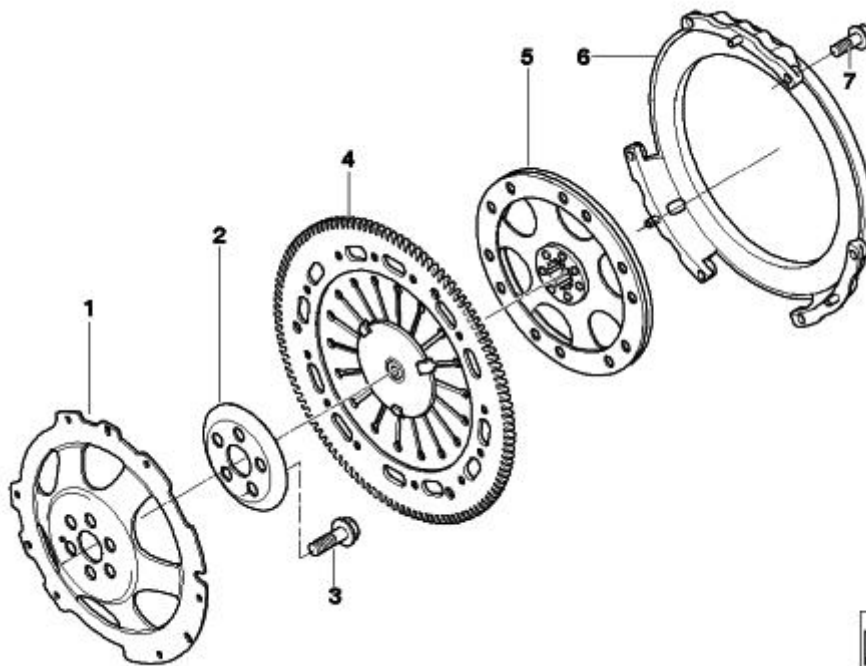


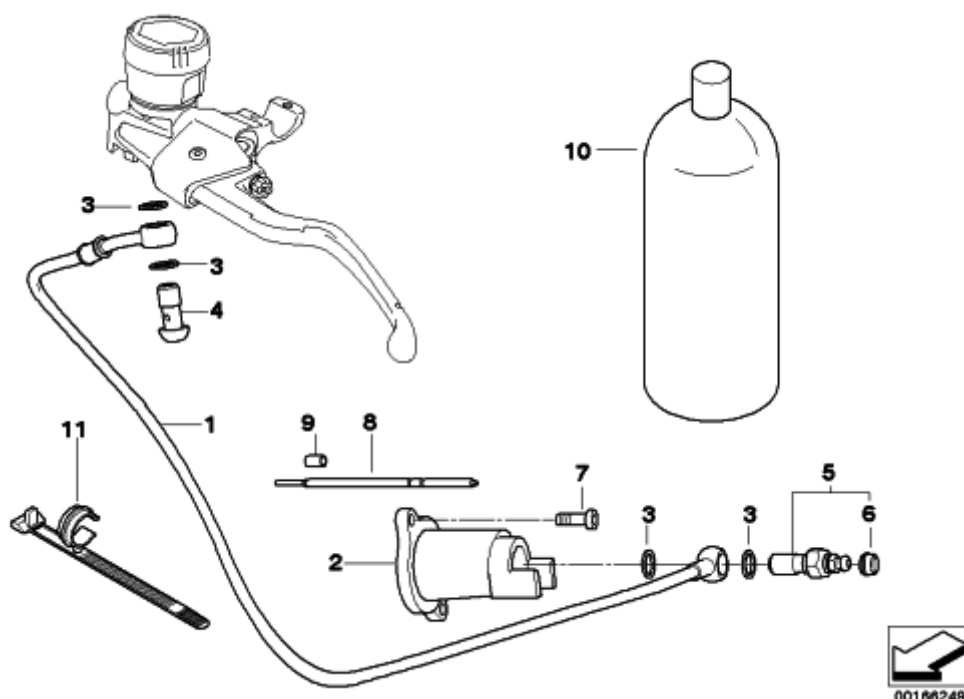
# 21\_0195 - CLUTCH/MOUNTING PARTS



#	Part Number	Description	lb	Qty	Each
01	21217697741	CLUTCH HOUSING	1.92	1	\$212.37
02	21217697739	REINFORCEMENT RING	0.15	1	\$20.15
03	21217684771	COLLAR SCREW - M11X1.5X27	0.07	5	\$2.42
04	21217702595	PRESSURE PLATE	4.17	1	\$339.46
05	21217697737	CLUTCH PLATE	0.69	1	\$175.31
06	21217697740	HOUSING COVER	1.96	1	\$170.97
07	21212332469	INNER HEX BOLT - M6X20	0.02	6	\$2.00

Recommended replacing anytime the clutch is disassembled.



## 21\_0196 - CLUTCH CONTROL



#	Part Number	Description	lb	Qty	Each
01	21527728880	CLUTCH CABLE, INPUT/OUTPUT CYLINDER - L=1230MM	0.24	1	\$156.46
02	21527724542	OUTPUT CYLINDER CLUTCH - D=24	0.25	1	\$151.51
03	07119963072	GASKET RING - A10X13,5-CU		4	\$0.50
04	34327667316	HOLLOW BOLT - M10X1	0.02	1	\$5.51
05	34327673647	SCREW PLUG WITH VENTILATION	0.04	1	\$7.89
06	34212314001	CAP		1	\$4.20
07	23002332975	FILLISTER-HEAD SCREW - M 6X18	0.02	2	\$1.20
08	21217702596	PUSH ROD, SPHERICAL	0.27	1	\$48.72
09	23211230440	FELTRING		1	\$3.97



The 23211230440 felt ring goes into a groove on the new pushrod 21527659113 (does not apply to all models). Old pushrod may not have the groove. Price is sold as EACH...

10	21520392546	HYDRAULIC OIL, VITAMOL V10 - 250ML	0.51	X	NA
		 <p>This is available under U.S. part numbers. Order by Part Number on the main page of the fiche:</p> <ul style="list-style-type: none"> <li>• 16oz. - 07510398495</li> <li>• 2oz. - 07510398494</li> </ul> 			
11	16131465119	HOSE CLAMP		1	\$2.46