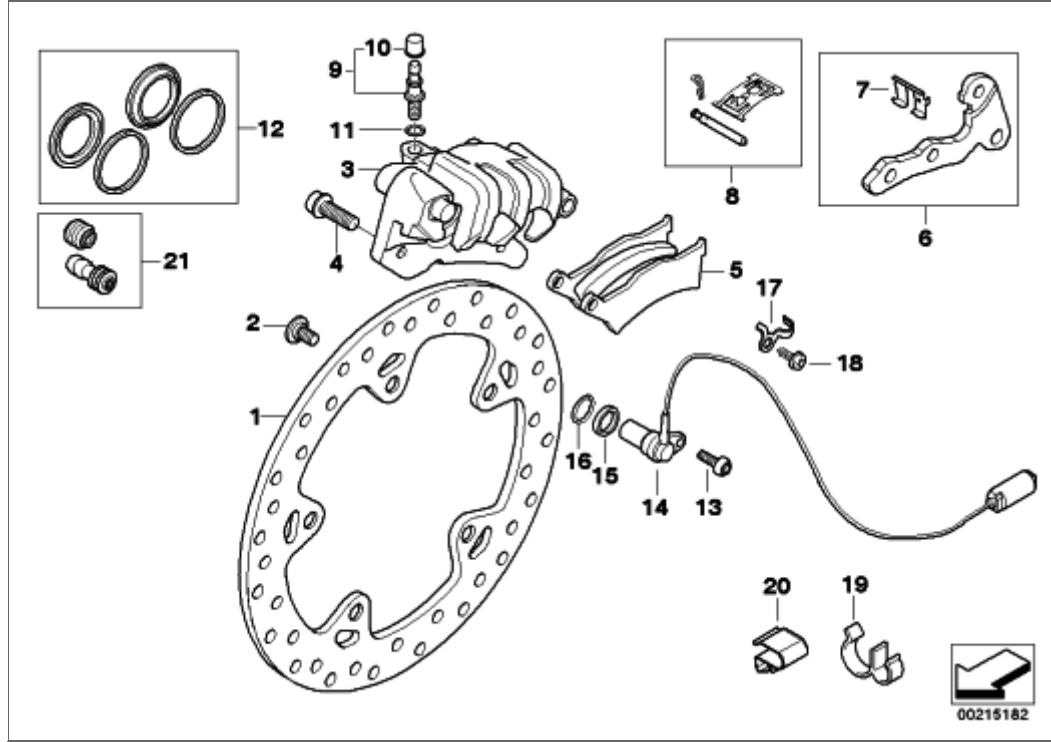


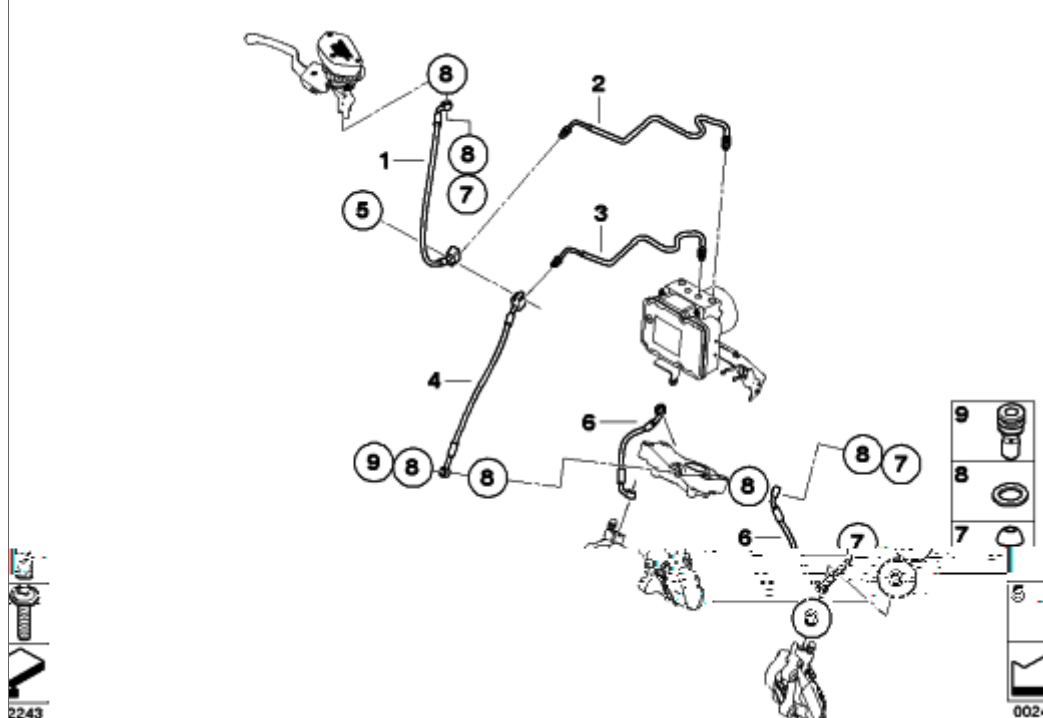
34_1393 - REAR WHEEL BRAKE



#	Part Number	Description	lb	Qty	Each
01	34217664102	REAR BRAKE DISC	2.12	1	\$271.80
02	33177709205	SCREW - M8X15,5 ZNS3 MK	0.02	5	\$1.54
03	34217677603	BRAKE CALIPER, REAR	1.98	1	\$549.70
04	46717726491	TRAPEZOIDAL SCREW - M8X25-10.9-SI	0.02	2	\$1.80
05	34217660281	SET: OF BRAKE PADS, SINTERED METAL - D=26/28MM	0.47	1	\$101.95
07	34217663749	SUPPORT PLATE		1	\$12.19
08	34217690537	SET: MOUNTING PARTS SET	0.06	1	\$18.13
09	34327673647	SCREW PLUG WITH VENTILATION	0.04	1	\$7.89
10	34212314001	CAP		1	\$4.20
11	07119963072	GASKET RING - A10X13,5-CU		2	\$0.50
12	34217674607	SET OF BRAKE CALIPER PISTON SEALS - D=28MM		1	\$23.16
					
13	36317678083	OVAL HEAD SCREW - M5X10		1	\$1.80
14	34527677824	WHEELSPEED SENSOR	5.18	1	\$88.78
15	33117707796	CENTERING RING		1	\$1.12
16	34527708523	O-RING - 15X2		1	\$1.33
17	34527675285	BRACKET		1	\$2.13
34527675285 was superseded by 34528527860.					
18	36317678083	OVAL HEAD SCREW - M5X10		1	\$1.80
19	34527664098	TANDEM CLAMP - D=6/4,5MM		3	\$0.60
20	07147566122	CLIP RETAINER - A=4,0 - 4,5MM		1	\$0.58
21	34212330312	REPAIR KIT, RUBBER COVER	0.04	1	\$27.85
					

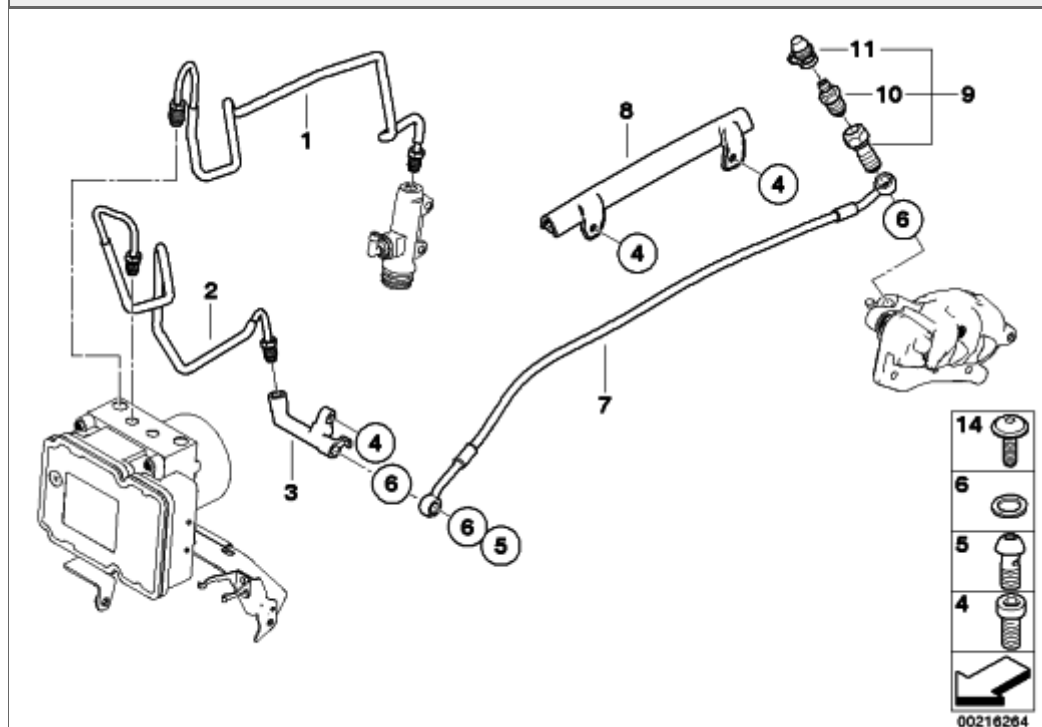
34_1662 - FRONT BRAKE RIVET PACKAGE					
#	Part Number	Description	lb	Qty	Each
01	34117711428	BRAKE ROTOR WITH RIVET - D=320-4.5MM			

34_1768 - BRAKE PIPE FRONT ABS



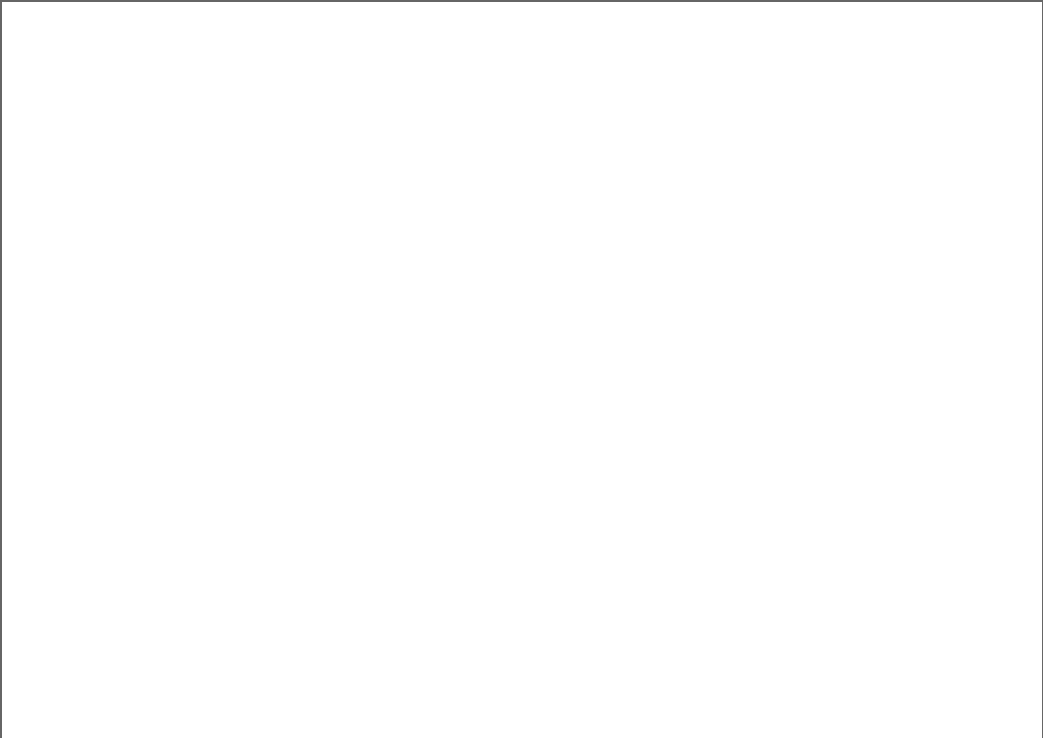
#	Part Number	Description	lb	Qty	Each
01	34327712090	BRAKE-LINE CONTROL CIRCUIT, FRONT	0.22	1	\$85.28
02	34327723189	BRAKE PIPE CONTROL CIRCUIT, FRONT	0.13	1	NA
03	34327723190	BRAKE CIRCUIT PIPE, FRONT	0.11	1	NA
04	34327714651	BRAKE CIRCUIT HOSE, FRONT	0.22	1	NA
05	63127680859	FILLISTER HEAD SCREW - M6X30	0.02	1	\$3.78
06	34327689975	BRAKE HOSE, LEFT	0.13	1	\$49.66
06	34327689976	BRAKE HOSE, RIGHT	0.13	1	\$49.66
07	34327667316	HOLLOW BOLT - M10X1	0.02	6	\$5.51
08	07119963072	GASKET RING - A10X13,5-CU		X	\$0.50
09	34327726763	VENTILATION BOLT	0.04	1	NA

34_1769 - BRAKE PIPE REAR ABS



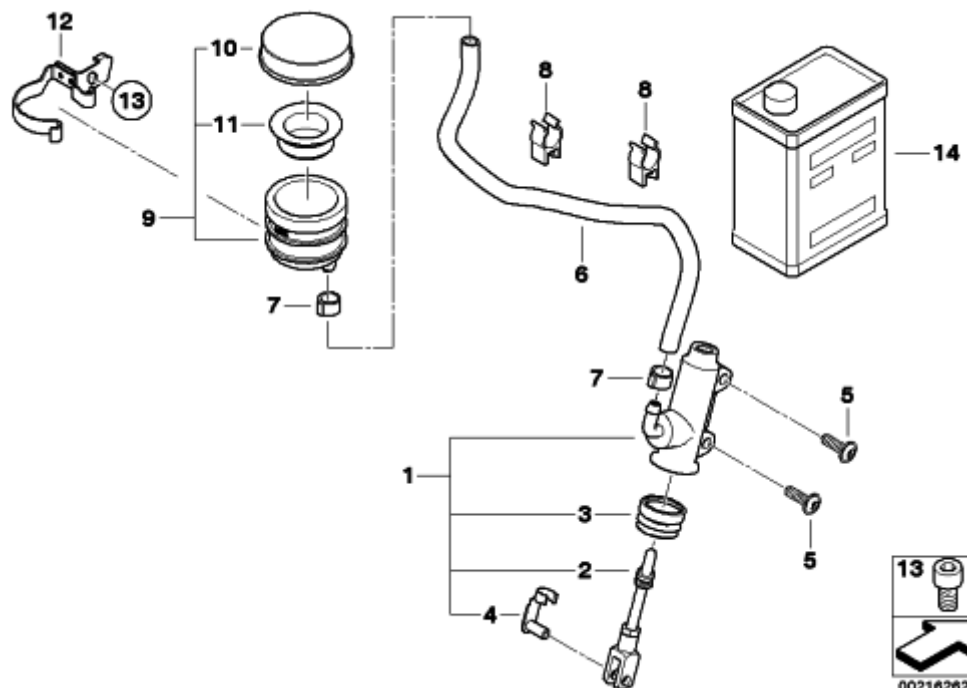
#	Part Number	Description	lb	Qty	Each
01	34327728956	BRAKE PIPE CONTROL CIRCUIT, REAR	0.18	1	NA
02	34327728957	BRAKE CIRCUIT PIPE, REAR	0.15	1	NA
03	34327679297	ADAPTER	0.07	1	\$45.72
04	07129904588	ISA SCREW - M6X16	0.01	1	\$0.96
05	34327667316	HOLLOW BOLT - M10X1	0.02	1	\$5.51
06	07119963072	GASKET RING - A10X13,5-CU		4	\$0.50
07	34327673646	STAHLFLEX BRAKE HOSE	0.20	1	\$74.23
08	34327675056	COVER	0.06	1	\$8.02
09	34327673647	SCREW PLUG WITH VENTILATION	0.04	1	\$7.89
10	34212335975	VENT SCREW	0.03	1	\$8.20
11	34212314001	CAP		1	\$4.20

34_1814 - PRESSURE MODULATOR I-ABS GENERATION 2



#	Part Number	Description	lb	Qty	Each
01	34517715109	INTEGRAL ABS GEN. 2	5.25	1	\$1886.37

34_1840 - REAR BRAKE MASTER CYLINDER W CONTAINER



#	Part Number	Description	lb	Qty	Each
01	34317705580	BRAKE MASTER CYLINDER - D=14MM	0.26	1	\$172.34
02	34317706458	PRESSURE ROD, MASTER CYLINDER	0.08	1	\$29.42
03	34312314289	RUBBER BOOT		1	\$12.96
04	07129934961	PIN - 6X12	0.01	1	\$2.26
05	35217685343	OVAL HEAD SCREW - M6X20 MK	0.02	2	\$2.00
06	34317691518	HOSE - L=380MM	0.04	1	\$8.49
07	17111460922	HOSE CLAMP - D=12,3MM		1	\$1.54



This is a "ONE TIME" clamp. (non-reusable) You need a special crimping tool to install. Order by part number on the main page of the fiche 30800 for the NON BMW crimp tool that we highly recommend.

08	34312335746	HOSE CLAMP		2	\$2.02
09	34312314082	FLUID CONTAINER REAR	0.09	1	\$20.43
10	34312314091	COVER	0.04	1	\$13.51



11	34312314092	RUBBER COVER	0.02	1	\$10.95
12	34317682891	HALTER BREMSFLÜSSIGKEITSBEHÄLTER	0.04	1	\$12.03
13	34317684537	ISA SCREW - M6X10		1	\$1.54
14	83130139895	BRAKE FLUID DOT4, LOW VISCOSITY - 250ML	0.71	X	NA

83130139895 was superseded by 83130443023.

14	83130443023	BRAKE FLUID DOT4 LV, LOW VISCOSITY - 250ML	0.71	X	NA
----	-------------	--	------	---	----