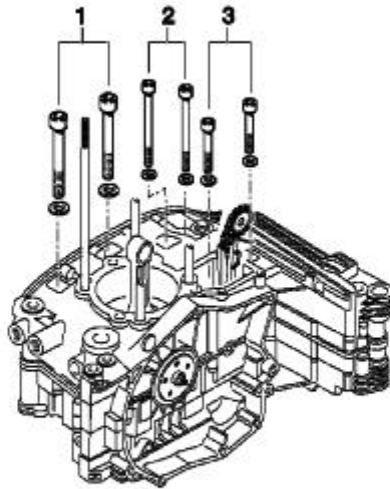
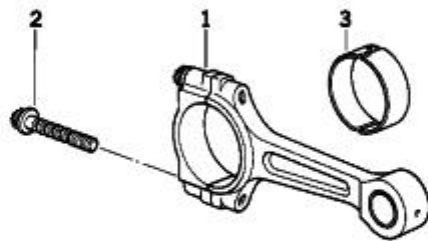


11_2800 - MOUNTING POINT CRANKCASE RIGHT



#	Part Number	Description	lb	Qty	Each
01	11117668387	ISA SCREW WITH WASHER - M10X130-ZNS3	0.18	1	\$13.92
01	11117668388	ISA SCREW WITH WASHER - M10X110	0.15	3	\$10.19
01	11117699786	ISA SCREW WITH WASHER - M10X130	0.18	1	\$9.68
01	11117699787	ISA SCREW WITH WASHER - M10X110	0.15	3	\$7.90
02	07129905113	ISA SCREW - M8X80	0.07	3	\$2.41
03	07129905114	ISA SCREW - M8X35	0.04	1	\$2.00

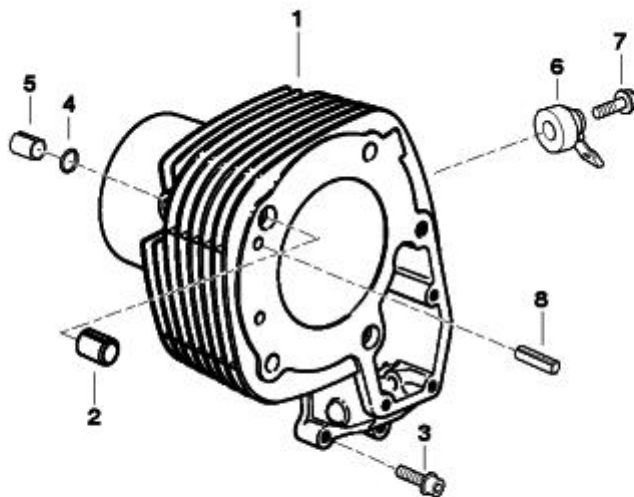
11_2806 - CONNECTING ROD/CONNECTING ROD BEARING



00001211

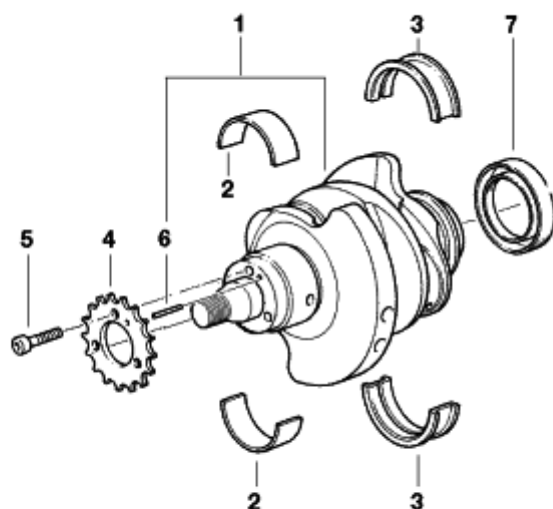
#	Part Number	Description	lb	Qty	Each
01	11247679317	CONNECTING ROD - 2XBLUE	1.29	2	\$180.83
01	11247679318	CONNECTING ROD - 3XWHITE	1.29	2	\$180.83
01	11247679319	CONNECTING ROD - 3XYELLOW	1.29	2	\$180.83
01	11247679320	CONNECTING ROD - 1XBLUE	1.29	2	\$150.00
--	11247684644	CONNECTING ROD BOLT - M10X1	0.07	X	\$6.47
02	11247684644	CONNECTING ROD BOLT - M10X1	0.07	4	\$6.47
03	11247700603	BEARING SHELL, COVER SIDE, RED	0.04	2	\$24.78
03	11247700604	BEARING SHELL, ROD SIDE, BLUE	0.04	2	\$24.78
03	11247700605	BEARING SHELL, COVER SIDE, RED - +0,25	0.04	2	\$24.78
03	11247700606	BEARING SHELL, ROD SIDE, BLUE - +0,25	0.04	2	\$24.78

11_3595 - CYLINDER



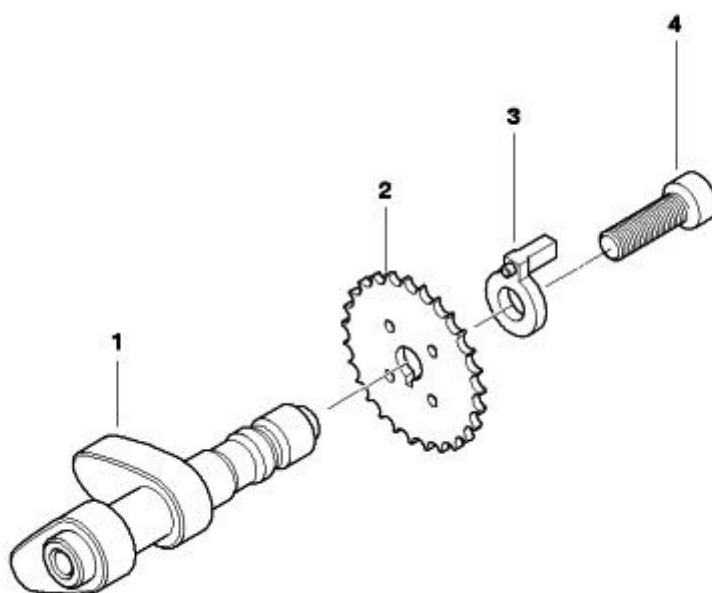
#	Part Number	Description	lb	Qty	Each
01	11117710477	LEFT CYLINDER, BLACK - AB	4.84	1	\$673.00
01	11117710478	RIGHT CYLINDER, BLACK - AB	4.84	1	NA
02	11121726241	DOWEL - D=12,5MM		2	\$1.69
03	07129904709	ISA SCREW - M6X35	0.02	6	\$1.40
04	11111342242	O-RING - 10,5X1,5		4	\$1.18
05	11121726238	DOWEL - D=10,5MM		2	\$1.69
06	11117664361	PING SENSOR	0.09	2	\$28.55
07	07129903926	ASA-BOLT - M8X30	0.02	2	\$2.59
08	07119942074	DOWEL PIN - 6X14		2	\$0.60

11_3669 - CRANKSHAFT ATTACHING PARTS



#	Part Number	Description	lb	Qty	Each
01	11217668172	CRANKSHAFT	11.75	1	NA
11217668172 was superseded by 11217702660.					
01	11217702660	CRANKSHAFT	11.75	1	\$1067.74
02	11217678806	BEARING SHELL YELLOW	0.07	2	\$32.47
02	11217678807	BEARING SHELL GREEN	0.07	2	\$32.47
02	11217678808	BEARING SHELL WHITE	0.07	2	\$32.47
02	11217678809	BEARING SHELL YELLOW - +0,25	0.07	2	\$32.47
02	11217678810	BEARING SHELL GREEN - +0,25	0.07	2	\$32.47
02	11217678811	BEARING SHELL WHITE - +0,25	0.07	2	\$32.47
03	11217675273	GUIDE-BEARING SHELL YELLOW	0.13	2	\$58.33
03	11217675274	GUIDE-BEARING SHELL GREEN	0.20	2	\$58.33
03	11217675275	GUIDE-BEARING SHELL WHITE	0.20	2	\$58.33
03	11217678812	GUIDE-BEARING SHELL YELLOW - +0,25	0.20	2	\$58.33
03	11217678813	GUIDE-BEARING SHELL GREEN - +0,25	0.20	2	\$58.33
03	11217678814	GUIDE-BEARING SHELL WHITE - +0,25	0.20	2	\$58.33
04	11317669893	CRANKSHAFT SPROCKET	0.16	1	\$24.93
05	07129904963	ISA SCREW - M6X16	0.02	3	\$0.80
06	07119904918	DOWEL PIN	0.02	1	\$0.80
07	11117671730	SHAFT SEAL - 65X83X7	0.04	1	\$24.80
11117671730 was superseded by 11118528386.					
07	11118528386	SHAFT SEAL - 65X83X8	0.07	1	NA

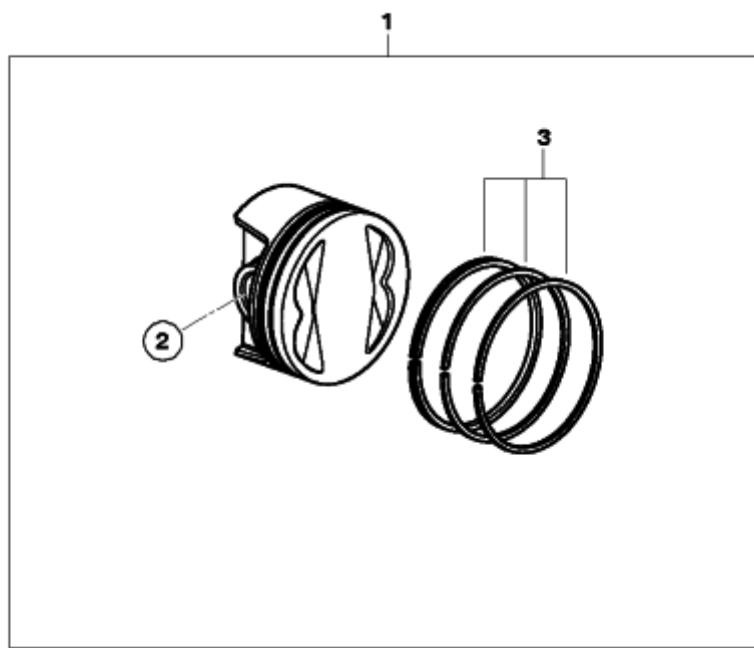
11_3676 - CAMSHAFT



00134126

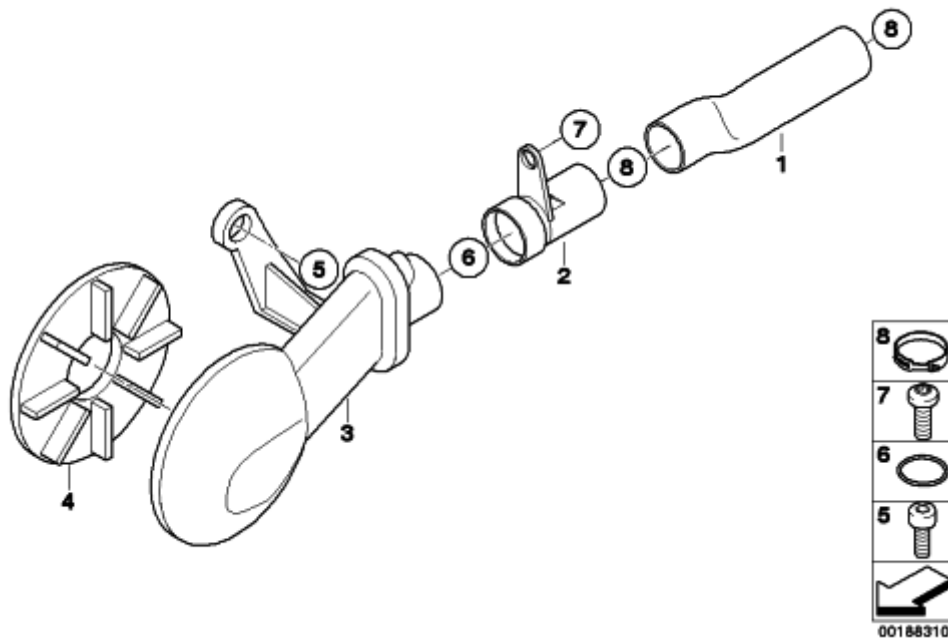
#	Part Number	Description	lb	Qty	Each
01	11317726740	CAMSHAFT I	0.66	2	\$305.43
01	11317726741	CAMSHAFT II	0.66	2	\$305.43
02	11317707810	SPROCKET	0.09	2	\$18.89
03	11311341469	WASHER - 10,5X21X6	0.02	2	\$1.93
03	11318521660	CAMSHAFT SENSOR RELUCTOR RING	0.04	1	\$9.56
04	07129903613	ISA SCREW - M10X1,25X25	0.07	2	\$2.32

11_4202 - PISTON, SINGLE COMPONENTS



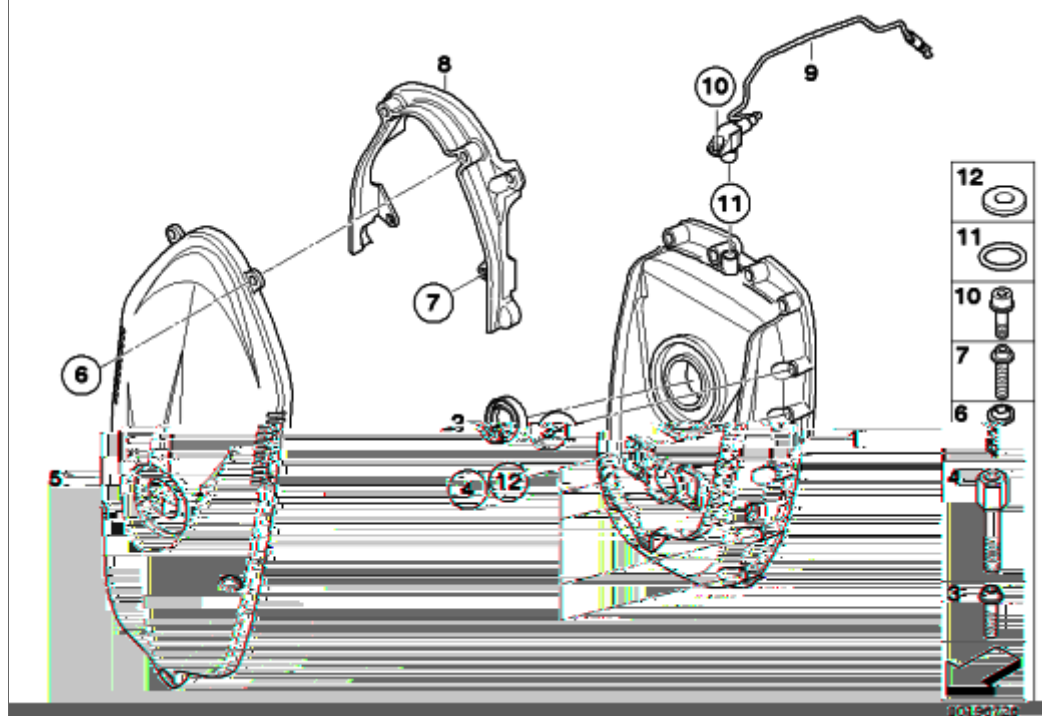
#	Part Number	Description	lb	Qty	Each
01	11257721863	PISTON AB - E=12,0	1.28	2	NA
02	11251335476	LOCK RING - A22X1,75		4	\$1.76
03	11257652848	SET: REPAIR KIT PISTON RINGS - D=101	0.07	2	\$82.52

11_4206 - ENGINE VENTILATION



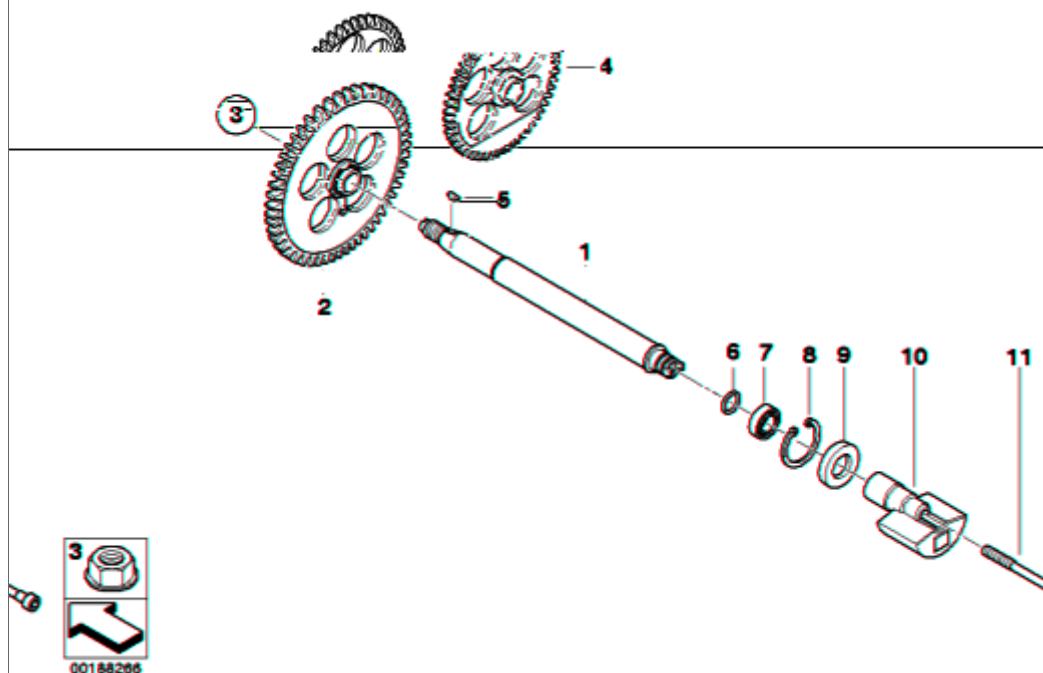
#	Part Number	Description	lb	Qty	Each
01	11157712578	VENT HOSE	0.15	1	NA
02	11157713167	FITTING, ENGINE AIR DISCHARGE	0.02	1	NA
03	11157713166	BREATHER TUBE	0.02	1	NA
04	11157724795	BREATHER	0.04	1	\$12.48
05	07129905261	TORX-COUNTERSUNK HEAD SCREW - M6X16 MK ZNS3		1	\$0.96
06	12727694010	O-RING - 17X2		1	\$1.33
07	07129903978	TORX SCREW - M6X16MM ZNS3	0.02	1	\$0.71
08	11157679174	HOSE CLAMP - D=28MM	0.02	2	\$1.54

11_4207 - TIMING CHAIN COVER



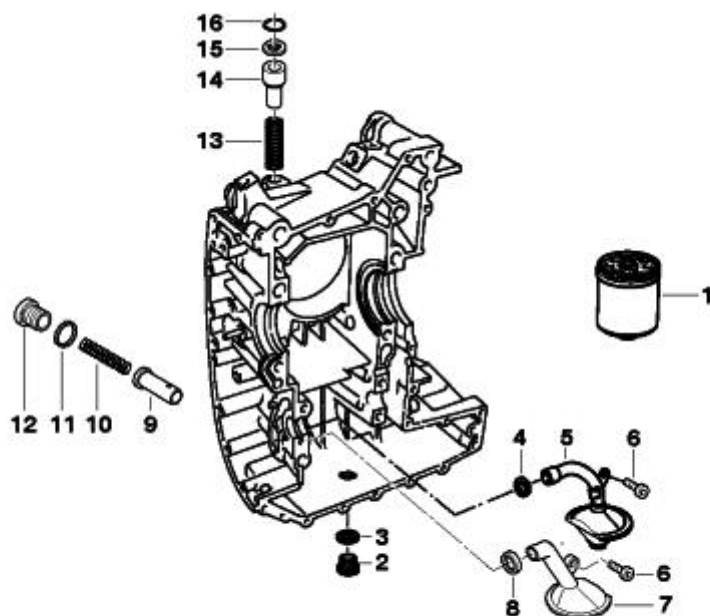
#	Part Number	Description	lb	Qty	Each
01	11147719509	GEAR BOX GEAR, BLACK	2.56	1	NA
02	11147672642	SHAFT SEAL - 36X50X7	0.02	1	\$14.45
11147672642 was superseded by 11148528387.					
02	11118528387	SHAFT SEAL - 36X50X7	0.02	1	NA
03	07129905537	ISA SCREW WITH WASHER - M6X30- ZNNIV SI	0.02	12	\$1.15
04	46637682835	STUD BOLT - 20MM M6	0.04	3	\$10.02
05	11147675089	COVERING WITH BADGE	0.75	1	\$42.48
06	51137057671	TORX-BOLT FOR PLASTIC MATERIAL - TS5X20		2	\$0.63
07	07129905120	ISA SCREW - M5X16		7	\$0.96
08	11147690747	BELTGUARD	0.18	1	\$19.41
09	12727674201	INDUCTIVE SENSOR, CRANKSHAFT	0.10	1	\$100.42
10	07129903978	TORX SCREW - M6X16MM ZNS3	0.02	1	\$0.71
11	12727694011	O-RING - 14X2		1	\$2.47
12	07119904204	WASHER - D= 6MM		3	\$1.74

11_4209 - COMPENSATING SHAFT



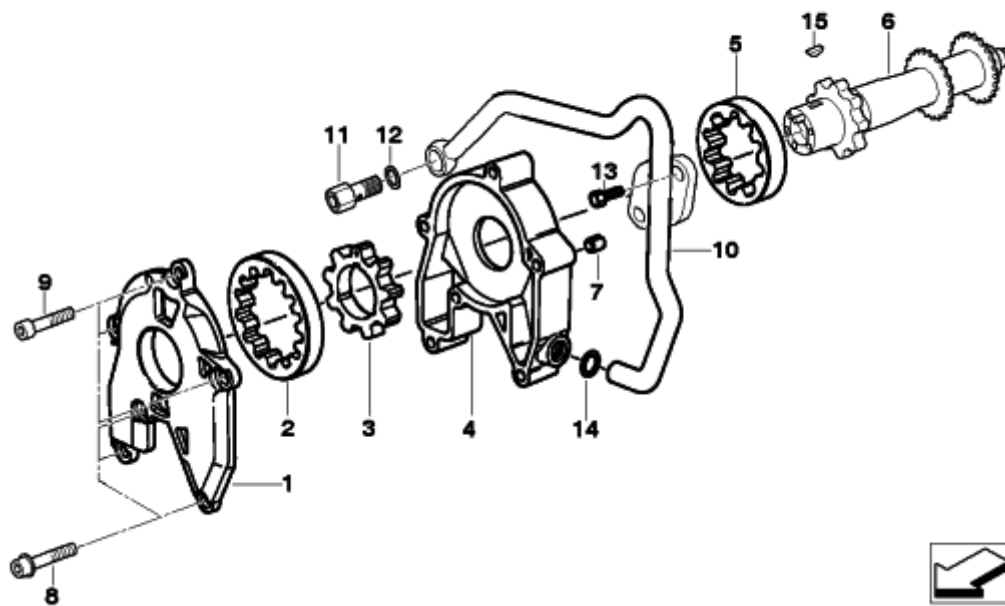
#	Part Number	Description	lb	Qty	Each
01	11277710841	COMPENSATING SHAFT	0.90	1	\$114.91
02	11277710840	GEAR WHEEL - Z=60	1.04	1	\$290.09
03	07119905435	HEX NUT - M12X1,5-8-ZNS3	0.04	1	\$0.87
04	11277674719	GEAR WHEEL - Z=60	2.01	1	\$291.97
05	07119951430	WOODRUFF KEY - 3X3,7		1	\$1.21
06	11277702625	O-RING - 12X1,5		1	\$0.90
07	11277675034	GROOVED BALL BEARING - 20X37X9	0.08	1	\$30.47
08	07119934675	LOCK RING - 37X1,5		1	\$1.12
09	11117721848	SHAFT SEAL - 25X37X6,5	0.02	1	\$19.32
10	11277702622	BALANCE WEIGHT	0.53	1	\$114.91
11	11277686883	ISA SCREW - M8X70	0.07	1	\$6.08

11_4215 - LUBRICATION SYSTEM-OIL FILTER



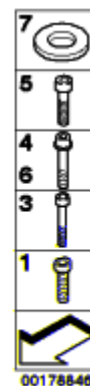
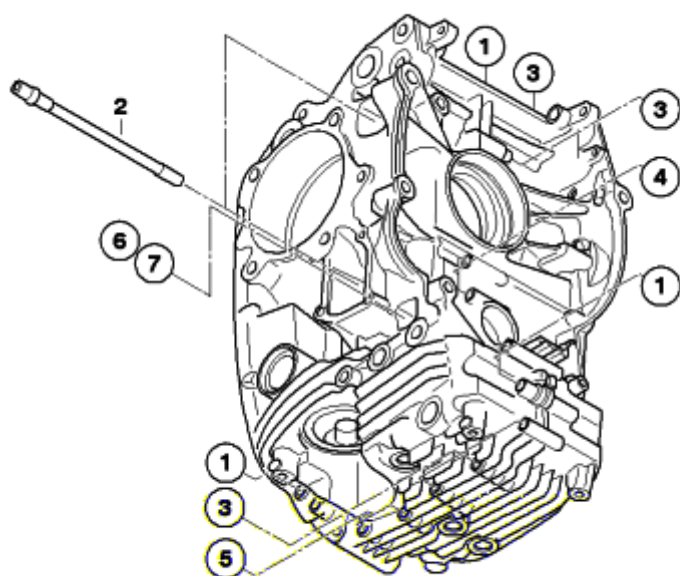
#	Part Number	Description	lb	Qty	Each
01	11427673541	OIL FILTER	0.62	1	\$14.00
02	07119902292	SCREW PLUG - M16X1,5	0.04	1	\$2.90
03	07119963252	GASKET RING - A16X20		1	\$0.64
04	11411341597	O-RING - 22X2,50		1	\$1.41
05	11411342500	SUCTION TUBE LUBRICATING OIL	0.13	1	\$10.34
06	07129906803	TORX BOLT - M6X25	0.02	2	\$2.00
07	11411342606	INTAKE MANIFOLD, COOLING	0.11	1	\$11.08
08	11411342499	O-RING - 20X2,5		1	\$1.82
09	11411340780	PISTON	0.04	1	\$11.08
10	11417713128	COMPRESSION SPRING		1	NA
11	07119963340	GASKET RING - A20X24-AL		1	\$0.64
12	11411460483	SCREW PLUG	0.09	1	\$5.30
13	11441342571	COMPRESSION SPRING	0.02	1	\$1.27
14	11411342761	EXPANDING ELEMENT - 95CEL	0.07	1	\$40.59
15	11441341041	BASE	0.02	1	\$1.93
16	17221342487	O-RING - 19X4		1	\$2.04

11_4216 - SINGLE PARTS F OIL PUMP



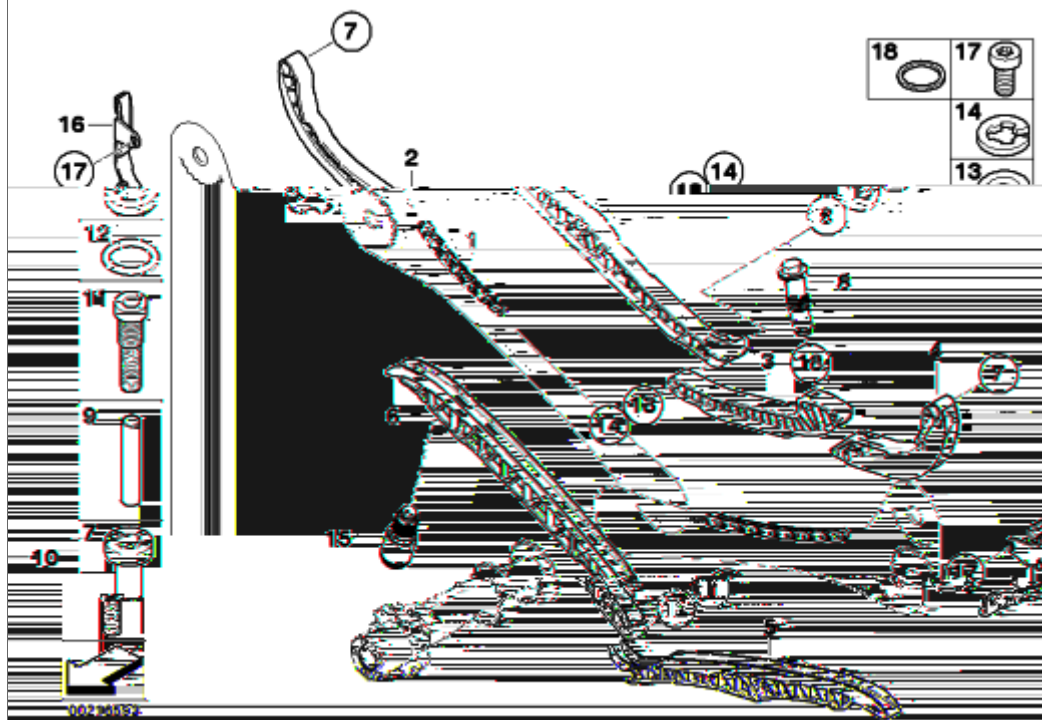
#	Part Number	Description	lb	Qty	Each
01	11417715119	OIL PUMP COVER	0.15	1	\$41.18
02	11411342630	EXTERIOR ROTOR, COOLING OIL	0.21	1	\$23.43
03	11417669625	INTERIOR ROTOR, COOLING OIL	0.20	1	\$28.48
04	11417716558	OIL PUMP HOUSING	0.29	1	\$85.61
05	11411340137	EXTERIOR ROTOR	0.20	1	\$23.43
06	11317710843	AUXILIARY SHAFT - Z=23	1.61	1	\$311.66
07	11121726242	DOWEL - D=8,5X9MM		2	\$1.10
08	11417669856	ISA SCREW - M6X45		3	\$2.00
09	11417669855	ISA SCREW - M6X40	0.02	3	\$2.00
10	11517672661	COOLING OIL LINE	0.33	1	\$130.42
11	11511342248	VENTILATION VALVE	0.10	1	\$32.11
12	07119963200	GASKET RING - A14X18-AL		1	\$0.50
13	07129904963	ISA SCREW - M6X16	0.02	2	\$0.80
14	11511340738	O-RING		1	\$1.10
15	07119951430	WOODRUFF KEY - 3X3,7		1	\$1.21

11_4218 - MOUNTING POINT CRANKCASE LEFT



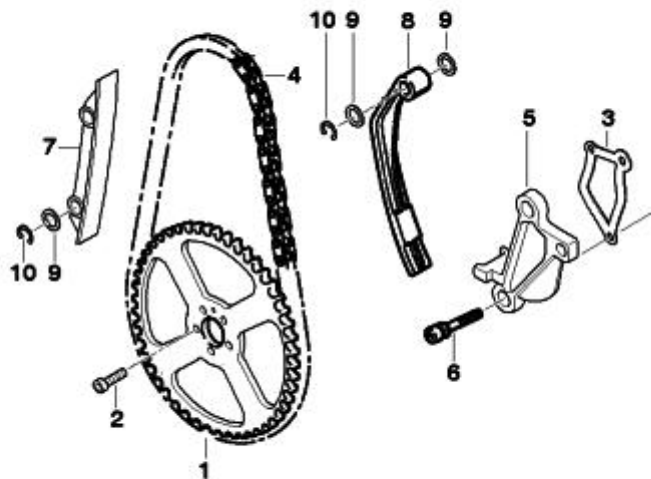
#	Part Number	Description	lb	Qty	Each
01	07129904710	ISA SCREW - M6X50	0.02	6	\$1.40
02	11117668388	ISA SCREW WITH WASHER - M10X110	0.15	3	\$10.19
03	07129904709	ISA SCREW - M6X35	0.02	7	\$1.40
04	07119903020	FILLISTER HEAD WITH WASHER - M6X35-U1-ZNS3	0.02	2	\$0.51
05	07129904708	ISA SCREW WITH WASHER - M6X25-U1-ZNS3	0.02	2	\$0.64
06	07129904502	ISA SCREW - M8X60 ZNS3	0.07	1	\$2.00
07	11117682756	WASHER-GASKET - M8X19X2		1	\$5.70

11_4267 - TIMING-VALVE TRAIN-TIMING CHAIN/CAMSHAFT



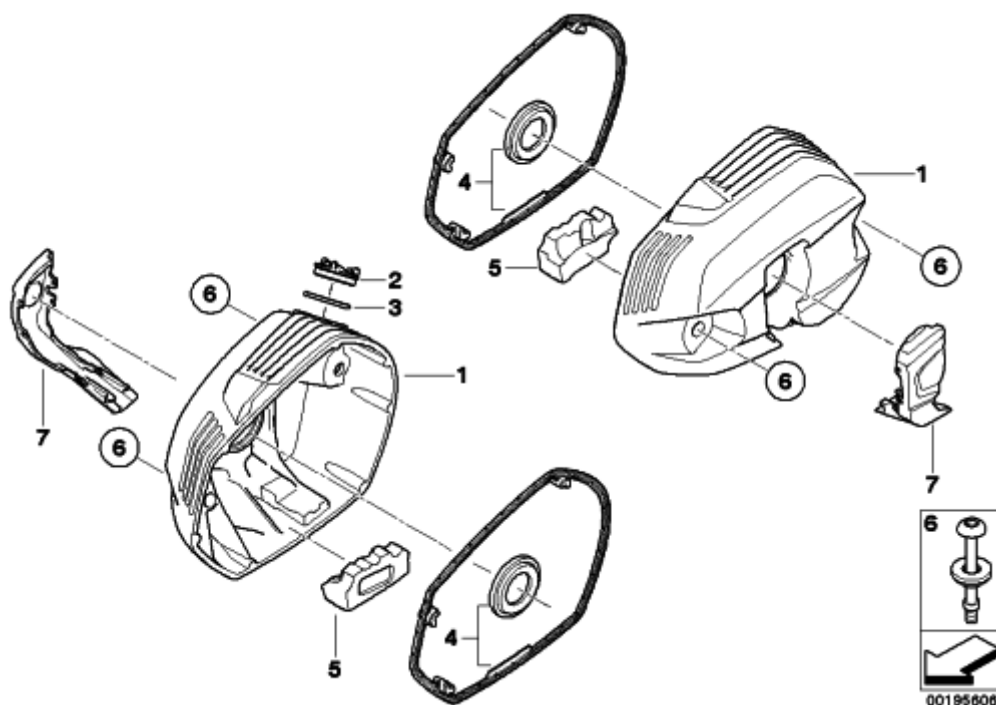
#	Part Number	Description	lb	Qty	Each
01	11317707774	SLEEVE CHAIN, SINGLE	0.53	2	\$82.06
02	11317707777	GUIDE RAIL RIGHT	0.15	1	\$9.43
03	11317707781	LEFT CHAIN TENSIONER	0.09	1	NA
04	11317711495	LEFT CHAIN TENSIONER	0.18	1	NA
05	11317707776	GUIDE RAIL LEFT	0.15	1	NA
06	11317707782	RIGHT CHAIN TENSIONER	0.15	1	\$12.97
07	11317710888	SPACER BOLT - M6X16	0.04	2	NA
08	11317707797	CHAIN TENSIONER, LEFT	0.20	1	\$58.80
09	11317668224	BEARING BOLT - L=76,4	0.07	1	NA
10	11317707787	CHAIN GUIDE, LEFT	0.09	1	NA
11	11317685312	ISA SCREW - M10X50	0.07	1	\$3.68
12	07119900244	GASKET RING - A10X15-AL		1	\$0.57
13	11311460923	SHIM		2	\$0.50
14	07119932841	CIRCLIP - D=6MM		2	\$0.50
15	11317707798	CHAIN TENSIONER, RIGHT	0.20	1	\$61.83
16	11317707792	CHAIN GUIDE, RIGHT	0.09	1	\$21.26
17	07129905037	ISA SCREW - M6X12 ZNS3		2	\$0.50
18	07119963340	GASKET RING - A20X24-AL		1	\$0.64

11_4277 - TIMING CHAIN/CHAIN TENSIONER/SLIDE RAIL



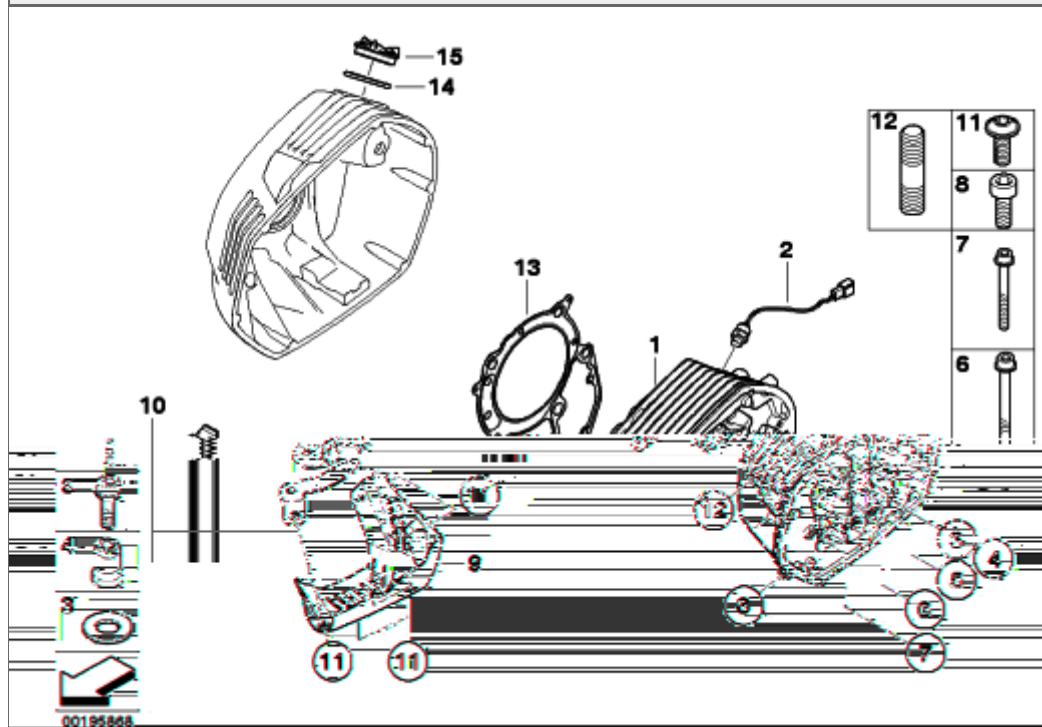
#	Part Number	Description	lb	Qty	Each
01	11317668125	SPROCKET	0.45	1	\$44.63
02	07129904494	ISA SCREW - M5X16	0.01	5	\$0.60
03	11317674453	GASKET		1	\$3.14
04	11317694426	TIMING CHAIN	0.45	1	\$50.74
05	11317710397	ABUTMENT	0.07	1	NA
06	07129905118	ISA SCREW - M6X25	0.02	3	NA
07	11311341293	GUIDE RAIL	0.02	1	\$6.70
08	11317688154	CHAIN TENSIONER	0.04	1	NA
09	11311460923	SHIM		4	\$0.50
10	07119932841	CIRCLIP - D=6MM		3	\$0.50

11_4289 - CYLINDER HEAD COVER/MOUNTING PARTS



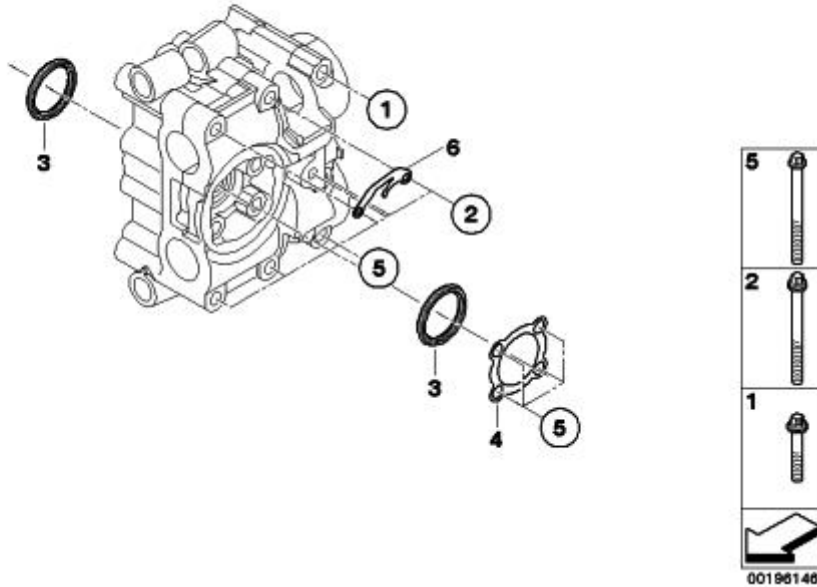
#	Part Number	Description	lb	Qty	Each
01	11127723233	CYLINDER HEAD COVER, SILVER, LEFT	1.34	1	\$188.07
01	11127723234	CYLINDER HEAD COVER, SILVER, RIGHT	1.43	1	\$197.61
02	11127677368	OIL COVER LID	0.02	1	\$3.98
03	07119904950	O-RING - 27X3,2		1	\$2.41
04	11127723216	SET: GASKET KIT, CYLINDER HEAD COVERS	0.22	1	\$77.23
05	11127710489	TWIST PROTECTION, LEFT	0.13	1	\$23.80
05	11127710490	TWIST PROTECTION, RIGHT	0.13	1	\$23.80
06	11127698958	SCREW WITH BUSH	0.07	4	\$15.72
07	11127728975	SPARK PLUG COVER, LEFT	0.09	1	\$14.97
07	11127728976	SPARK PLUG COVER, RIGHT	0.09	1	\$14.97

11_4292 - CYLINDER HEAD/MOUNTING PARTS



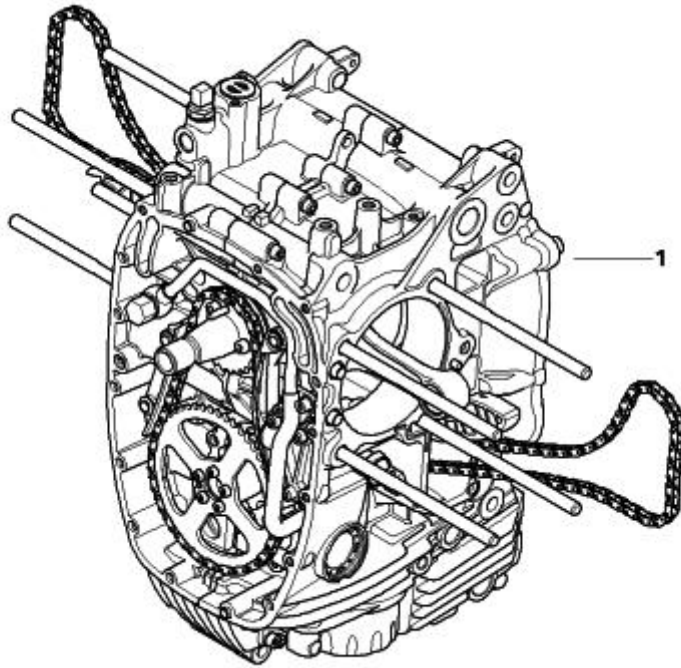
#	Part Number	Description	lb	Qty	Each
01	11127723593	LEFT CYLINDER HEAD, BLACK	6.27	1	\$750.64
01	11127723594	RIGHT CYLINDER HEAD, BLACK	6.27	1	NA
02	12627673407	TEMPERATURE SENSOR WITH CABLE	0.07	1	\$59.38
03	11121464026	WASHER	0.02	8	\$0.96
04	11127711063	NUT - M10X1,5	0.04	8	\$2.95
05	07129905537	ISA SCREW WITH WASHER - M6X30- ZNNIV SI	0.02	6	\$1.15
06	07129906319	ISA SCREW - M8X125	0.11	2	\$5.69
07	07129904710	ISA SCREW - M6X50	0.02	2	\$1.40
08	07129904831	ISA SCREW - M6X12	0.01	6	\$1.20
09	12137653137	COVER FOR CYLINDER, LOWER LEFT	0.13	1	\$23.39
09	12137653138	COVER FOR CYLINDER, LOWER RIGHT	0.15	1	\$23.39
10	12137711051	RETAINER PANEL, COVER, LEFT	0.07	1	\$11.07
10	12137711052	RETAINER PANEL, COVER, RIGHT	0.07	1	\$11.64
11	06327651203	FILLISTER HEAD SCREW - M6X12		X	\$0.80
12	07129906148	STUD BOLT - M8X30-ZNS3	0.02	4	\$0.82
13	11127710398	CYL.HEAD GASKET	0.07	2	\$46.63
14	07119904950	O-RING - 27X3,2		1	\$2.41
15	11127677368	OIL COVER LID	0.02	1	\$3.98

11_4293 - ATTACHMENT FOR CONTROL SUPPORT



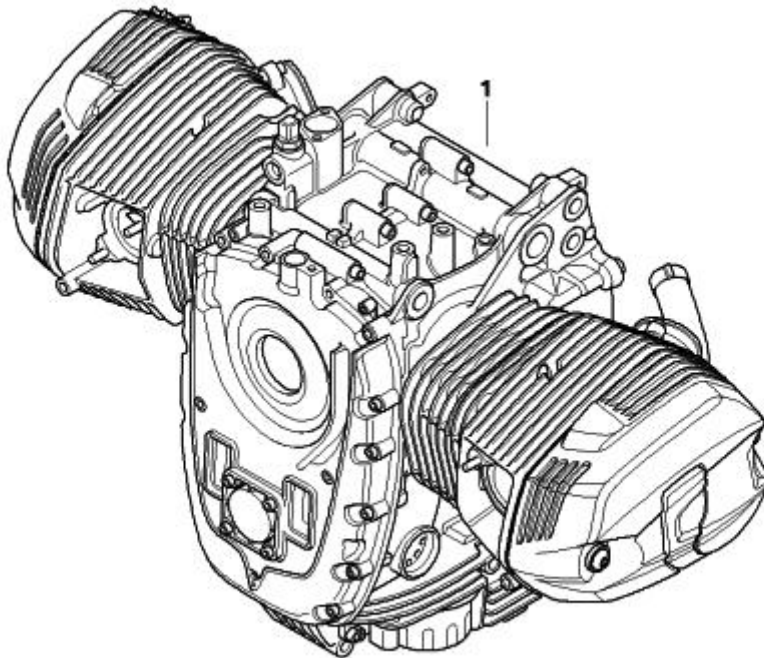
#	Part Number	Description	lb	Qty	Each
01	07129903971	ASA BOLT WITH WASHER - M6X40	0.02	2	\$1.80
02	07129906484	ASA BOLT WITH WASHER - M6X72	0.04	12	\$2.00
03	11337711981	GASKET RING		4	\$2.41
04	11337710430	SEAL FOR BOLT SURFACE		2	\$3.14
05	07129906485	ASA-BOLT - M6X72	0.04	10	\$2.00
06	11337713920	CONTACT PLATE		2	\$1.98

11_4566 - SHORT ENGINE



#	Part Number	Description	lb	Qty	Each
01	11007716689	BLACK SHORT ENGINE	51.81	1	NA

11_4589 - ENGINE



#	Part Number	Description	lb	Qty	Each
01	11007716691	BLACK ENGINE	121.25	1	\$7366.43